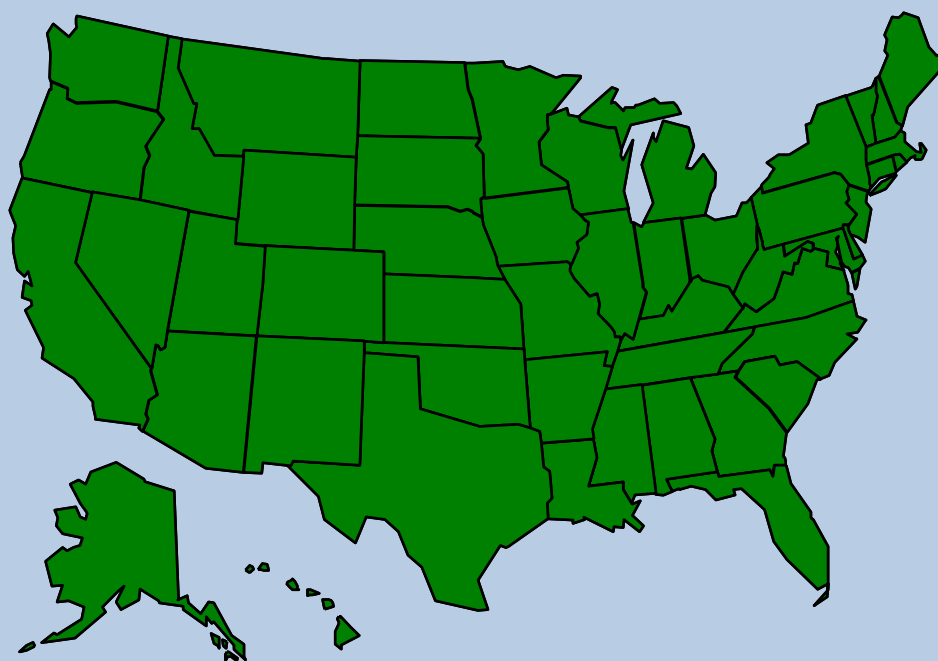


SUPPLEMENTAL NUTRITION
ASSISTANCE PROGRAM
(SNAP)
STATE ACTIVITY REPORT

Federal Fiscal Year 2008



*SNAP: Putting Healthy
Foods Within Reach*



United States Department of Agriculture
Food and Nutrition Service
Program Accountability and Administration Division
February 2010

TABLE OF CONTENTS



ITEM	PAGE
Introduction.....	1
National Summary FY 2007 – 2008.....	2
State Participation and Issuance.....	3
Administrative Costs.....	10
Fair Hearings.....	20
Fraud Investigations, Prosecutions, and Administrative Disqualification Hearings.....	23
Disqualified Recipients - Federal Database Status.....	34
Recipient Claims.....	36
Rankings of Participation and Issuance.....	46
Comparison to Prior Year.....	52
Multi-Year National Data.....	66
End Notes.....	71

INTRODUCTION

This is a report of State activity in the Supplemental Nutrition Assistance Program (SNAP). The data contained herein is State reported data or data calculated from State reported data.

The tables are based on data for all of Fiscal Year 2008. December 2009 was set as the cutoff date for receipt of data for the States through the established reporting channels. It should be noted that the FNS-366B data is reported by State fiscal year, which varies among the States.

As may be expected in a report of this size and taken from multiple data sources, there are some apparent discrepancies in reported data. Most discrepancies are due to compiling the data at different times and from different data sources within the State. In some cases, the data may still be revised.

To assist the reader, we have included End Notes at the conclusion of the report identifying the data sources and other pertinent information for each individual section. All data, with two exceptions, was compiled from the National Data Bank, the official repository of SNAP data. The report, itself, was prepared by the Program Accountability and Administration Division

We have again included a recipient claims table that reports on the methods used by State agencies to collect claims against recipient households. Some of the data included in the recipient claims table is derived from administrative offset weekly statistical reports prepared by the U. S. Department of the Treasury.

We have also included data on disqualified recipients from our Electronic Disqualified Recipient Subsystem, a Federal database that provides information on disqualified recipients to State agencies. In addition, a “Rankings” section again has been included in the report. That section contains tables that rank participation and issuance data, from high to low, for each State for FY 2008.

We also wish to point out that this entire report is available on the SNAP web page at:

www.fns.usda.gov/pd/snapmain.htm

If there are any questions concerning the data in this publication, contact either Karen Peko at (703) 305-2481 or Autumn McCain at (703) 305-2472 or e-mail us at:

PADMAILBOX@fns.usda.gov

or write us at:

**Food and Nutrition Service
Supplemental Nutrition Assistance Program
Program Accountability and
Administration Division,
Room 816
3101 Park Center Drive
Alexandria, VA 22302**



**SUPPLEMENTAL NUTRITION ASSISTANCE PROGRAM ACTIVITY - FY 2007 - 2008
NATIONAL SUMMARY**



<u>ACTIVITY</u>	FY 2007	FY 2008	PERCENT CHANGE
<u>PARTICIPATION AND ISSUANCE</u>			
PERSONS (MONTHLY) (IN MIL)	26.5	28.4	7.33%
HOUSEHOLDS (MONTHLY) (IN MIL)	11.8	12.7	7.97%
ISSUANCE (IN MIL \$)	\$30,373.3	\$34,608.4	13.94%
AVG MONTHLY BENEFIT PER PERSON	\$95.63	\$101.52	6.15%
AVG MONTHLY BENEFIT PER HOUSEHOLD	\$214.69	\$226.57	5.53%
<u>ISSUANCE (AS PERCENT OF TOTAL ISSUANCE)</u>			
EBT	99.81%	99.81%	
COUPONS	0.00%	0.00%	
CASH-OUT	0.18%	0.18%	
<u>STATE ADMINISTRATIVE COSTS (IN MIL \$)</u>			
TOTAL COSTS	\$5,730.1	\$6,179.4	7.84%
FED SHARE OF CERTIFICATION	\$1,513.4	\$1,650.9	9.09%
FED SHARE OF ISSUANCE ACTIVITY	\$161.3	\$154.8	-4.02%
FED SHARE OF FRAUD CONTROL	\$120.4	\$130.0	7.96%
FED SHARE OF TOTAL	\$2,747.8	\$2,977.6	8.36%
<u>FAIR HEARINGS</u>			
FAIR HEARING DECISIONS	52,093	56,367	8.20%
<u>FRAUD CONTROL ACTIVITY</u>			
STATE INVESTIGATIONS COMPLETED	724,949	783,725	8.11%
DISQ CONSENT AGREEMENTS	9,338	8,305	-11.06%
STATE PROSECUTIONS COMPLETED	5,400	5,806	7.52%
FRAUD HEARINGS WAIVED	19,842	19,070	-3.89%
FRAUD HEARINGS COMPLETED	17,911	16,215	-9.47%
TOTAL DISQ DETERMINATIONS	51,034	48,311	-5.34%
<u>RECIPIENT CLAIMS (IN MIL \$)</u>			
FRAUD CLAIMS ESTABLISHED	\$21.6	\$27.3	25.97%
HSHLD ERROR CLAIMS ESTAB.	\$201.1	\$209.8	4.30%
AGENCY ERROR CLAIMS ESTAB.	\$83.4	\$93.7	12.40%
TOTAL CLAIMS ESTABLISHED	\$306.1	\$330.7	8.04%
FRAUD CLAIMS COLLECTED	\$53.1	\$61.0	15.00%
HSHLD ERROR CLAIMS COLLECTED	\$109.6	\$144.1	31.55%
AGENCY ERROR CLAIMS COLLECTED	\$49.9	\$65.5	31.30%
TOTAL CLAIMS COLLECTED	\$212.5	\$270.7	27.36%
FRAUD CLAIMS RECOUPED	\$16.8	\$18.0	7.11%
HSHLD ERROR CLAIMS RECOUPED	\$45.2	\$52.6	16.36%
AGENCY ERROR CLAIMS RECOUPED	\$25.6	\$32.2	25.72%
TOTAL CLAIMS RECOUPED	\$87.6	\$102.8	17.32%
FEDERAL DEBT COLLECTIONS	\$91.7	\$118.5	29.25%

Participation and Issuance

In fiscal year (FY) 2008 State agencies issued approximately \$34.6 billion in food stamp benefits to a monthly average 12.7 million households or 28.4 million people participating in the Supplemental Nutrition Assistance Program (SNAP). The average monthly benefit was \$101.52 per person or \$226.57 per household. The Federal Government pays 100 percent of the benefits. In FY 2008, participation increased 7.33 percent from 26.5 million people the previous year, and issuance increased 13.94 percent from \$30.4 billion in FY 2007 to \$34.6 billion in FY 2008.

Electronic Benefit Systems

The Personal Responsibility and Work Opportunity Act of 1996 mandates that all States must convert from paper coupon systems to an electronic benefit transfer (EBT) system before October 1, 2002. EBT systems issue and redeem benefits using cards, electronic funds transfer networks, and point-of-sale technology in authorized retail food stores. In FY 2004, the Food Stamp Program converted 100 percent to EBT in all State agencies, including U.S. Territories and the District of Columbia. Specifically, 48 States, the District of Columbia, Virgin Islands and Guam have online food stamp EBT systems and two States have offline food stamp EBT systems. As a result, in FY 2008 \$34.5 billion was issued in electronic benefits to a monthly average 12.7 million households. At the end of the fiscal year, 99.81 percent of households were on EBT.

Food Coupons

By June 2004, EBT had replaced coupons in every State for initial issuance. However, for a period, two States, Ohio and Wyoming, still issued coupons when necessary for benefit conversion purposes because their smartcards could not be used for EBT benefits in other States. In fact, Wyoming continued issuing coupons as a way to convert unspent EBT benefits for EBT households who were moving out of State up until September 2006.

With Ohio and Wyoming both converting to magnetic-stripe EBT food stamp system cards in 2006 and 2007, there is no longer any need to issue coupons for benefit conversion purposes because the online cards are interoperable and can now be used in other States. On occasion, small amounts of previously issued coupons were still being turned into State agencies in FY 2008, resulting in one State reporting negative coupon issuance.

Cash-out

Cash-out projects are limited to certain pilot projects authorized in the Food Stamp Act that either have continued to operate since 1981 or that were approved prior to August 1996. While technically not considered part of the EBT system for issuance, redemption, and reporting purposes, States with FNS-approved cash-out issuance systems (for wage supplementation, welfare reform, or other approved demonstration projects) may issue cash-out benefits electronically, in place of paper checks. Cash-out benefits may be issued electronically via either direct deposit or debit cards, which can be used at automatic teller machines to draw the funds. In FY 2008, \$60.6 million in cash-out benefits were issued to 63,968 households in 5 States. Cash-out represented less than 0.2 percent of issuance.

Demonstration Projects

- In FY 2008, Minnesota operated an approved Group Residential Housing project that provided FSP benefits to be used to purchase food for the residents.



TABLE 1: Supplemental Nutrition Assistance Program Participation and Issuance - FY 2008

STATE	Persons Participating (Monthly)	Households Participating (Monthly)	Issuance
Connecticut	225,383	120,573	\$284,829,257
Maine	173,039	86,459	\$196,264,502
Massachusetts	505,782	266,430	\$586,587,498
New Hampshire	63,583	31,244	\$71,404,026
New York	1,952,991	1,036,676	\$2,572,842,848
Rhode Island	84,868	41,548	\$107,719,391
Vermont	55,847	27,642	\$62,169,303
Delaware	74,429	32,512	\$86,180,751
District of Columbia	89,442	47,721	\$112,324,800
Maryland	359,985	167,174	\$432,043,737
New Jersey	437,860	210,867	\$532,944,902
Pennsylvania	1,187,822	558,939	\$1,386,964,117
Virgin Islands	13,613	5,036	\$22,855,912
Virginia	545,079	245,592	\$610,021,737
West Virginia	276,800	124,183	\$304,122,744
Alabama	571,591	231,740	\$663,901,057
Florida	1,454,928	745,847	\$1,778,641,937
Georgia	1,021,155	417,427	\$1,276,750,098
Kentucky	633,194	283,752	\$742,037,605
Mississippi	447,181	188,498	\$496,847,694
North Carolina	946,978	419,127	\$1,104,399,962
South Carolina	589,763	255,702	\$706,792,219
Tennessee	911,253	410,458	\$1,114,791,337
Illinois	1,299,443	595,832	\$1,718,280,001
Indiana	623,415	267,802	\$772,883,186
Michigan	1,256,373	590,930	\$1,506,032,208
Minnesota	293,918	140,423	\$329,569,307
Ohio	1,150,928	526,800	\$1,494,661,229
Wisconsin	422,781	180,792	\$430,028,455
Arkansas	377,883	157,871	\$431,547,807
Louisiana	790,733	324,887	\$1,025,182,241
New Mexico	239,959	95,769	\$269,188,961
Oklahoma	419,038	176,483	\$491,362,648
Texas	2,532,047	994,786	\$3,068,232,722
Colorado	252,933	109,405	\$325,104,191
Iowa	258,173	117,632	\$305,655,259
Kansas	187,569	85,784	\$211,265,341
Missouri	888,564	314,012	\$810,471,619
Montana	80,407	35,494	\$94,225,210
Nebraska	120,809	52,082	\$140,752,738
North Dakota	48,412	21,825	\$59,266,579
South Dakota	62,945	26,189	\$78,001,007
Utah	134,180	53,715	\$150,960,595
Wyoming	22,608	9,564	\$26,389,959
Alaska	56,977	21,976	\$94,262,437
Arizona	627,660	258,517	\$772,440,411
California	2,220,127	914,161	\$2,995,179,522
Guam	27,874	8,295	\$60,125,091
Hawaii	96,551	48,824	\$184,612,461
Idaho	100,198	40,835	\$116,567,714
Nevada	144,494	67,380	\$169,714,444
Oregon	469,315	243,257	\$542,197,277
Washington	581,001	292,515	\$680,799,184
US	28,409,880	12,728,981	\$34,608,397,238

TABLE 2: Supplemental Nutrition Assistance Program Average Monthly Benefit - FY 2008

STATE	Average Monthly Benefit Per Person	Average Monthly Benefit Per Household
Connecticut	\$105.31	\$196.86
Maine	\$94.52	\$189.17
Massachusetts	\$96.65	\$183.47
New Hampshire	\$93.58	\$190.45
New York	\$109.78	\$206.82
Rhode Island	\$105.77	\$216.06
Vermont	\$92.77	\$187.42
Delaware	\$96.49	\$220.89
District of Columbia	\$104.65	\$196.15
Maryland	\$100.01	\$215.37
New Jersey	\$101.43	\$210.62
Pennsylvania	\$97.30	\$206.79
Virgin Islands	\$139.91	\$378.22
Virginia	\$93.26	\$206.99
West Virginia	\$91.56	\$204.08
Alabama	\$96.79	\$238.74
Florida	\$101.87	\$198.73
Georgia	\$104.19	\$254.89
Kentucky	\$97.66	\$217.92
Mississippi	\$92.59	\$219.65
North Carolina	\$97.19	\$219.58
South Carolina	\$99.87	\$230.34
Tennessee	\$101.95	\$226.33
Illinois	\$110.19	\$240.32
Indiana	\$103.31	\$240.50
Michigan	\$99.89	\$212.38
Minnesota	\$93.44	\$195.58
Ohio	\$108.22	\$236.44
Wisconsin	\$84.76	\$198.22
Arkansas	\$95.17	\$227.80
Louisiana	\$108.04	\$262.96
New Mexico	\$93.48	\$234.23
Oklahoma	\$97.72	\$232.02
Texas	\$100.98	\$257.03
Colorado	\$107.11	\$247.63
Iowa	\$98.66	\$216.53
Kansas	\$93.86	\$205.23
Missouri	\$76.01	\$215.09
Montana	\$97.65	\$221.22
Nebraska	\$97.09	\$225.21
North Dakota	\$102.02	\$226.30
South Dakota	\$103.27	\$248.20
Utah	\$93.75	\$234.20
Wyoming	\$97.27	\$229.95
Alaska	\$137.87	\$357.45
Arizona	\$102.56	\$249.00
California	\$112.43	\$273.04
Guam	\$179.76	\$604.01
Hawaii	\$159.34	\$315.10
Idaho	\$96.95	\$237.89
Nevada	\$97.88	\$209.90
Oregon	\$96.27	\$185.74
Washington	\$97.65	\$193.95
US	\$101.52	\$226.57

TABLE 3: Supplemental Nutrition Assistance Program Participation By Benefit Type - Persons - FY 2008

STATE	Persons Receiving Cash (Monthly Average)	Persons Receiving EBT (Monthly Average)	Persons Receiving Other (Monthly Average)	Persons Receiving Food Coupons (Monthly Average)	Total Persons
Connecticut	0	225,383	0	0	225,383
Maine	0	173,039	0	0	173,039
Massachusetts	0	505,782	0	0	505,782
New Hampshire	0	63,583	0	0	63,583
New York	0	1,952,991	0	0	1,952,991
Rhode Island	0	84,868	0	0	84,868
Vermont	8,891	46,956	0	0	55,847
Delaware	0	74,429	0	0	74,429
District of Columbi	0	89,442	0	0	89,442
Maryland	0	359,985	0	0	359,985
New Jersey	0	437,860	0	0	437,860
Pennsylvania	0	1,187,822	0	0	1,187,822
Virgin Islands	0	13,613	0	0	13,613
Virginia	0	545,079	0	0	545,079
West Virginia	0	276,800	0	0	276,800
Alabama	0	571,591	0	0	571,591
Florida	0	1,454,928	0	0	1,454,928
Georgia	0	1,021,155	0	0	1,021,155
Kentucky	0	633,194	0	0	633,194
Mississippi	0	447,181	0	0	447,181
North Carolina	0	946,978	0	0	946,978
South Carolina	0	589,763	0	0	589,763
Tennessee	0	911,253	0	0	911,253
Illinois	0	1,299,443	0	0	1,299,443
Indiana	0	623,415	0	0	623,415
Michigan	0	1,256,373	0	0	1,256,373
Minnesota	13,583	276,687	3,648	0	293,918
Ohio	23,511	1,127,416	0	0	1,150,928
Wisconsin	0	422,781	0	0	422,781
Arkansas	0	377,883	0	0	377,883
Louisiana	0	790,733	0	0	790,733
New Mexico	0	239,959	0	0	239,959
Oklahoma	0	419,038	0	0	419,038
Texas	0	2,532,047	0	0	2,532,047
Colorado	0	252,933	0	0	252,933
Iowa	0	258,173	0	0	258,173
Kansas	0	187,569	0	0	187,569
Missouri	0	888,564	0	0	888,564
Montana	0	80,407	0	0	80,407
Nebraska	0	120,809	0	0	120,809
North Dakota	0	48,412	0	0	48,412
South Dakota	0	62,945	0	0	62,945
Utah	3,078	131,102	0	0	134,180
Wyoming	0	22,608	0	0	22,608
Alaska	0	56,977	0	0	56,977
Arizona	0	627,660	0	0	627,660
California	0	2,220,127	0	0	2,220,127
Guam	0	27,874	0	0	27,874
Hawaii	0	96,551	0	0	96,551
Idaho	0	100,198	0	0	100,198
Nevada	0	144,494	0	0	144,494
Oregon	19,910	449,406	0	0	469,315
Washington	0	581,001	0	0	581,001
US	68,972	28,337,260	3,648	0	28,409,880

TABLE 4: Supplemental Nutrition Assistance Program Participation By Benefit Type - Households - FY 2008

STATE	Households Receiving Cash (Monthly Average)	Households Receiving EBT (Monthly Average)	Households Receiving Other (Monthly Average)	Households Receiving Food Coupons (Monthly Average)	Total Households
Connecticut	0	120,573	0	0	120,573
Maine	0	86,459	0	0	86,459
Massachusetts	0	266,430	0	0	266,430
New Hampshire	0	31,244	0	0	31,244
New York	0	1,036,676	0	0	1,036,676
Rhode Island	0	41,548	0	0	41,548
Vermont	8,275	19,367	0	0	27,642
Delaware	0	32,512	0	0	32,512
District of Columbi	0	47,721	0	0	47,721
Maryland	0	167,174	0	0	167,174
New Jersey	0	210,867	0	0	210,867
Pennsylvania	0	558,939	0	0	558,939
Virgin Islands	0	5,036	0	0	5,036
Virginia	0	245,592	0	0	245,592
West Virginia	0	124,183	0	0	124,183
Alabama	0	231,740	0	0	231,740
Florida	0	745,847	0	0	745,847
Georgia	0	417,427	0	0	417,427
Kentucky	0	283,752	0	0	283,752
Mississippi	0	188,498	0	0	188,498
North Carolina	0	419,127	0	0	419,127
South Carolina	0	255,702	0	0	255,702
Tennessee	0	410,458	0	0	410,458
Illinois	0	595,832	0	0	595,832
Indiana	0	267,802	0	0	267,802
Michigan	0	590,930	0	0	590,930
Minnesota	12,453	124,322	3,648	0	140,423
Ohio	22,093	504,707	0	0	526,800
Wisconsin	0	180,792	0	0	180,792
Arkansas	0	157,871	0	0	157,871
Louisiana	0	324,887	0	0	324,887
New Mexico	0	95,769	0	0	95,769
Oklahoma	0	176,483	0	0	176,483
Texas	0	994,786	0	0	994,786
Colorado	0	109,405	0	0	109,405
Iowa	0	117,632	0	0	117,632
Kansas	0	85,784	0	0	85,784
Missouri	0	314,012	0	0	314,012
Montana	0	35,494	0	0	35,494
Nebraska	0	52,082	0	0	52,082
North Dakota	0	21,825	0	0	21,825
South Dakota	0	26,189	0	0	26,189
Utah	2,924	50,792	0	0	53,715
Wyoming	0	9,564	0	0	9,564
Alaska	0	21,976	0	0	21,976
Arizona	0	258,517	0	0	258,517
California	0	914,161	0	0	914,161
Guam	0	8,295	0	0	8,295
Hawaii	0	48,824	0	0	48,824
Idaho	0	40,835	0	0	40,835
Nevada	0	67,380	0	0	67,380
Oregon	18,223	225,034	0	0	243,257
Washington	0	292,515	0	0	292,515
US	63,968	12,661,365	3,648	0	12,728,981

TABLE 5: Supplemental Nutrition Assistance Program Issuance By Benefit Type - FY 2008

	Issuance By Cash	Issuance By EBT	Issuance By Other	Issuance By Food Coupons	Total
STATE					
Connecticut	\$0	\$284,829,257	\$0	\$0	\$284,829,257
Maine	\$0	\$196,264,502	\$0	\$0	\$196,264,502
Massachusetts	\$0	\$586,587,498	\$0	\$0	\$586,587,498
New Hampshire	\$0	\$71,404,026	\$0	\$0	\$71,404,026
New York	\$0	\$2,572,842,848	\$0	\$0	\$2,572,842,848
Rhode Island	\$0	\$107,719,391	\$0	\$0	\$107,719,391
Vermont	\$11,292,623	\$50,876,680	\$0	\$0	\$62,169,303
Delaware	\$0	\$86,180,751	\$0	\$0	\$86,180,751
District of Columbi	\$0	\$112,324,800	\$0	\$0	\$112,324,800
Maryland	\$0	\$432,043,737	\$0	\$0	\$432,043,737
New Jersey	\$0	\$532,944,902	\$0	\$0	\$532,944,902
Pennsylvania	\$0	\$1,386,964,117	\$0	\$0	\$1,386,964,117
Virgin Islands	\$0	\$22,855,912	\$0	\$0	\$22,855,912
Virginia	\$0	\$610,021,737	\$0	\$0	\$610,021,737
West Virginia	\$0	\$304,122,944	\$0	(\$200)	\$304,122,744
Alabama	\$0	\$663,901,057	\$0	\$0	\$663,901,057
Florida	\$0	\$1,778,641,937	\$0	\$0	\$1,778,641,937
Georgia	\$0	\$1,276,750,098	\$0	\$0	\$1,276,750,098
Kentucky	\$0	\$742,037,605	\$0	\$0	\$742,037,605
Mississippi	\$0	\$496,847,694	\$0	\$0	\$496,847,694
North Carolina	\$0	\$1,104,399,962	\$0	\$0	\$1,104,399,962
South Carolina	\$0	\$706,792,219	\$0	\$0	\$706,792,219
Tennessee	\$0	\$1,114,791,337	\$0	\$0	\$1,114,791,337
Illinois	\$0	\$1,718,279,467	\$0	\$0	\$1,718,279,467
Indiana	\$0	\$772,883,186	\$0	\$0	\$772,883,186
Michigan	\$0	\$1,506,032,208	\$0	\$0	\$1,506,032,208
Minnesota	\$7,952,347	\$318,067,275	\$3,549,685	\$0	\$329,569,307
Ohio	\$19,330,722	\$1,475,330,507	\$0	\$0	\$1,494,661,229
Wisconsin	\$0	\$430,028,455	\$0	\$0	\$430,028,455
Arkansas	\$0	\$431,547,807	\$0	\$0	\$431,547,807
Louisiana	\$0	\$1,025,182,241	\$0	\$0	\$1,025,182,241
New Mexico	\$0	\$269,188,961	\$0	\$0	\$269,188,961
Oklahoma	\$0	\$491,362,648	\$0	\$0	\$491,362,648
Texas	\$0	\$3,068,232,722	\$0	\$0	\$3,068,232,722
Colorado	\$0	\$325,104,191	\$0	\$0	\$325,104,191
Iowa	\$0	\$305,655,259	\$0	\$0	\$305,655,259
Kansas	\$0	\$211,265,341	\$0	\$0	\$211,265,341
Missouri	\$0	\$810,471,619	\$0	\$0	\$810,471,619
Montana	\$0	\$94,225,210	\$0	\$0	\$94,225,210
Nebraska	\$0	\$140,752,738	\$0	\$0	\$140,752,738
North Dakota	\$0	\$59,266,579	\$0	\$0	\$59,266,579
South Dakota	\$0	\$78,001,007	\$0	\$0	\$78,001,007
Utah	\$2,180,260	\$148,780,335	\$0	\$0	\$150,960,595
Wyoming	\$0	\$26,389,959	\$0	\$0	\$26,389,959
Alaska	\$0	\$94,262,437	\$0	\$0	\$94,262,437
Arizona	\$0	\$772,440,411	\$0	\$0	\$772,440,411
California	\$0	\$2,995,179,522	\$0	\$0	\$2,995,179,522
Guam	\$0	\$60,125,091	\$0	\$0	\$60,125,091
Hawaii	\$0	\$184,612,461	\$0	\$0	\$184,612,461
Idaho	\$0	\$116,567,714	\$0	\$0	\$116,567,714
Nevada	\$0	\$169,714,444	\$0	\$0	\$169,714,444
Oregon	\$19,847,556	\$522,349,721	\$0	\$0	\$542,197,277
Washington	\$0	\$680,799,184	\$0	\$0	\$680,799,184
US	\$60,603,508	\$34,544,243,711	\$3,549,685	(\$200)	\$34,608,396,704

ADMINISTRATIVE COSTS



NOTABLE TRENDS

Administrative Costs

State agency administrative costs are affected by a number of factors including participation levels, the number and salary level of State staff, inflation, the location of State agency offices, type of issuance system, worker training costs, degree of automation, level of fraud control activity, etc. The Food and Nutrition Service (FNS) pays approximately 50 percent of State agency administrative costs to operate the program. Total State agency administrative costs prior to Federal cost sharing were \$6.2 billion, up 7.84 percent from \$5.7 billion the previous year. In FY 2008, the Federal share of administrative costs increased 8.36 percent to just over \$2.97 billion.



The Federal share of certification costs increased 9.09 percent in FY 2008 from \$1.51 billion in FY 2007 to \$1.65 billion. The Federal share of the certification cost per case (i.e., per household) per month increased from \$10.70 per case month to \$10.81 per case month.

TABLE 6: Supplemental Nutrition Assistance Program Households - Federal Share of Selected State Administrative Costs - FY 2008

STATE	Federal Share Certification Costs	Federal Share Issuance Costs	Federal Share Fraud Control Costs
Connecticut	\$9,839,658	\$768,984	\$1,666,141
Maine	\$4,867,771	\$892,656	\$359,961
Massachusetts	\$31,337,517	\$1,982,844	\$1,031,512
New Hampshire	\$1,105,371	\$285,080	\$99,806
New York	\$143,582,625	\$8,374,358	\$26,368,675
Rhode Island	\$2,516,132	\$475,025	\$93,893
Vermont	\$778,299	\$1,432,471	\$65,825
Delaware	\$10,016,911	\$1,157,972	\$769,088
District of Columbia	\$9,375,459	\$856,590	\$419,497
Maryland	\$31,857,814	\$2,068,433	\$440,162
New Jersey	\$50,308,426	\$2,824,691	\$11,253,381
Pennsylvania	\$84,376,621	\$7,307,866	\$4,968,683
Virgin Islands	\$2,608,249	\$511,852	\$144,103
Virginia	\$60,040,756	\$5,061,855	\$3,480,690
West Virginia	\$7,676,159	\$1,716,431	\$369,896
Alabama	\$21,650,608	\$1,310,055	\$1,048,070
Florida	\$42,328,397	\$9,857,596	\$2,278,896
Georgia	\$48,130,178	\$3,446,961	\$4,404,036
Kentucky	\$25,504,733	\$2,519,344	\$897,434
Mississippi	\$20,466,083	\$2,404,501	\$445,904
North Carolina	\$51,559,260	\$2,052,580	\$3,301,906
South Carolina	\$9,586,872	\$2,295,167	\$1,758,576
Tennessee	\$32,673,980	\$2,824,695	\$1,754,366
Illinois	\$64,136,139	\$8,225,072	\$1,148,262
Indiana	\$39,298,886	\$3,821,452	\$317,672
Michigan	\$75,272,697	\$3,052,260	\$2,259,212
Minnesota	\$30,863,102	\$3,013,779	\$1,136,844
Ohio	\$49,305,140	\$3,286,876	\$2,493,578
Wisconsin	\$16,039,689	\$1,168,446	\$780,228
Arkansas	\$18,528,866	\$1,648,953	\$1,031,824
Louisiana	\$62,825,122	\$3,350,961	\$2,115,609
New Mexico	\$18,045,294	\$375,226	\$56,986
Oklahoma	\$28,840,190	\$1,654,068	\$948,847
Texas	\$111,739,676	\$6,290,968	\$5,587,040
Colorado	\$21,051,237	\$1,427,015	\$2,213,896
Iowa	\$14,021,762	\$2,675,223	\$355,407
Kansas	\$10,814,408	\$910,391	\$28,620
Missouri	\$31,618,409	\$3,672,070	\$626,463
Montana	\$4,688,326	\$617,671	\$2,309
Nebraska	\$8,424,669	\$480,693	\$183,055
North Dakota	\$3,611,520	\$567,040	\$0
South Dakota	\$4,000,604	\$665,753	\$126,504
Utah	\$14,590,016	\$918,601	\$1,284,981
Wyoming	\$823,964	\$191,779	\$147,385
Alaska	\$8,088,551	\$310,462	\$361,778
Arizona	\$23,859,983	\$3,782,394	\$1,037,870
California	\$206,834,598	\$31,207,429	\$33,392,920
Guam	\$539,994	\$450,896	\$275,997
Hawaii	\$8,226,466	\$579,319	\$985,158
Idaho	\$5,609,735	\$1,222,416	\$209,638
Nevada	\$9,380,988	\$756,569	\$882,808
Oregon	\$31,335,252	\$2,491,349	\$1,587,199
Washington	\$26,256,878	\$3,553,604	\$1,007,507
US	\$1,650,860,040	\$154,796,742	\$130,006,098

TABLE 7: Supplemental Nutrition Assistance Program Federal Share of State Administrative Costs for ADP Services - FY 2008

STATE	Federal Share ADP Development Costs	Federal Share ADP Operations Costs
Connecticut	\$0	\$1,832,180
Maine	\$0	\$721,291
Massachusetts	\$1,430,037	\$294,729
New Hampshire	\$1,096	\$1,882,535
New York	\$1,430,669	\$10,932,575
Rhode Island	\$0	\$863,064
Vermont	\$0	\$382,434
Delaware	\$0	\$2,153,654
District of Columbia	\$0	\$859,478
Maryland	\$0	\$3,627,139
New Jersey	\$4,072,518	\$4,971,364
Pennsylvania	\$0	\$11,791,465
Virgin Islands	\$0	\$764,883
Virginia	\$0	\$5,079,687
West Virginia	\$0	\$2,419,159
Alabama	\$174,312	\$447,478
Florida	\$0	\$3,085,515
Georgia	\$0	\$4,868,333
Kentucky	\$0	\$1,151,798
Mississippi	\$0	\$1,606,214
North Carolina	\$219,943	\$1,467,910
South Carolina	\$0	\$1,116,979
Tennessee	\$0	\$3,029,255
Illinois	\$0	\$11,300,999
Indiana	\$730,584	\$2,447,552
Michigan	\$7,868,554	\$4,872,194
Minnesota	\$0	\$4,555,212
Ohio	\$239,870	\$3,751,851
Wisconsin	\$0	\$5,420,753
Arkansas	\$498,755	\$804,737
Louisiana	\$226,710	\$1,366,762
New Mexico	\$0	\$1,763,115
Oklahoma	\$0	\$2,845,751
Texas	\$17,890,000	\$9,179,469
Colorado	\$0	\$5,218,698
Iowa	\$0	\$1,196,100
Kansas	\$0	\$1,410,748
Missouri	\$1,259,584	\$951,638
Montana	\$186,017	\$1,223,593
Nebraska	\$0	\$2,058,061
North Dakota	\$0	\$451,081
South Dakota	\$0	\$441,770
Utah	\$1,974,824	\$2,037,066
Wyoming	\$47,783	\$536,362
Alaska	\$0	\$1,105,646
Arizona	\$40,777	\$424,746
California	\$11,622,511	\$44,003,975
Guam	\$0	\$16,976
Hawaii	\$0	\$1,389,662
Idaho	\$1,666,752	\$825,319
Nevada	\$713,872	\$689,479
Oregon	\$0	\$2,403,848
Washington	\$0	\$4,535,650
US	\$52,295,168	\$184,577,932

TABLE 8: Supplemental Nutrition Assistance Program Total Federal Share of State Administrative Costs - FY 2008

	Federal Share State Administrative Costs
STATE	
Connecticut	\$26,199,231
Maine	\$12,354,470
Massachusetts	\$47,084,007
New Hampshire	\$6,248,917
New York	\$319,238,285
Rhode Island	\$8,327,798
Vermont	\$8,455,094
Delaware	\$15,597,154
District of Columbia	\$15,387,060
Maryland	\$42,338,190
New Jersey	\$101,407,258
Pennsylvania	\$154,829,823
Virgin Islands	\$4,544,094
Virginia	\$86,085,387
West Virginia	\$15,223,927
Alabama	\$32,823,684
Florida	\$76,765,607
Georgia	\$69,663,527
Kentucky	\$38,453,140
Mississippi	\$27,860,614
North Carolina	\$68,448,221
South Carolina	\$18,249,024
Tennessee	\$48,826,274
Illinois	\$109,116,615
Indiana	\$56,913,500
Michigan	\$115,079,853
Minnesota	\$53,027,709
Ohio	\$116,679,075
Wisconsin	\$43,768,722
Arkansas	\$26,027,463
Louisiana	\$74,152,775
New Mexico	\$23,182,521
Oklahoma	\$38,539,210
Texas	\$173,225,711
Colorado	\$38,359,875
Iowa	\$21,557,326
Kansas	\$17,932,530
Missouri	\$50,243,055
Montana	\$9,124,596
Nebraska	\$13,961,388
North Dakota	\$6,418,983
South Dakota	\$7,953,122
Utah	\$23,247,829
Wyoming	\$5,137,803
Alaska	\$11,118,809
Arizona	\$46,454,582
California	\$510,126,304
Guam	\$1,898,814
Hawaii	\$13,464,033
Idaho	\$10,917,661
Nevada	\$13,770,397
Oregon	\$51,425,966
Washington	\$50,339,776
US	\$2,977,576,789

TABLE 9: Supplemental Nutrition Assistance Program Federal Share of Costs per Case per Month for Certification - FY 2008

STATE	Households Participating (Monthly)	Federal Share Certification Costs	Federal Cost Per Case Per Month for Certification
Connecticut	120,573	\$9,839,658	\$6.80
Maine	86,459	\$4,867,771	\$4.69
Massachusetts	266,430	\$31,337,517	\$9.80
New Hampshire	31,244	\$1,105,371	\$2.95
New York	1,036,676	\$143,582,625	\$11.54
Rhode Island	41,548	\$2,516,132	\$5.05
Vermont	27,642	\$778,299	\$2.35
Delaware	32,512	\$10,016,911	\$25.67
District of Columbia	47,721	\$9,375,459	\$16.37
Maryland	167,174	\$31,857,814	\$15.88
New Jersey	210,867	\$50,308,426	\$19.88
Pennsylvania	558,939	\$84,376,621	\$12.58
Virgin Islands	5,036	\$2,608,249	\$43.16
Virginia	245,592	\$60,040,756	\$20.37
West Virginia	124,183	\$7,676,159	\$5.15
Alabama	231,740	\$21,650,608	\$7.79
Florida	745,847	\$42,328,397	\$4.73
Georgia	417,427	\$48,130,178	\$9.61
Kentucky	283,752	\$25,504,733	\$7.49
Mississippi	188,498	\$20,466,083	\$9.05
North Carolina	419,127	\$51,559,260	\$10.25
South Carolina	255,702	\$9,586,872	\$3.12
Tennessee	410,458	\$32,673,980	\$6.63
Illinois	595,832	\$64,136,139	\$8.97
Indiana	267,802	\$39,298,886	\$12.23
Michigan	590,930	\$75,272,697	\$10.62
Minnesota	140,423	\$30,863,102	\$18.32
Ohio	526,800	\$49,305,140	\$7.80
Wisconsin	180,792	\$16,039,689	\$7.39
Arkansas	157,871	\$18,528,866	\$9.78
Louisiana	324,887	\$62,825,122	\$16.11
New Mexico	95,769	\$18,045,294	\$15.70
Oklahoma	176,483	\$28,840,190	\$13.62
Texas	994,786	\$111,739,676	\$9.36
Colorado	109,405	\$21,051,237	\$16.03
Iowa	117,632	\$14,021,762	\$9.93
Kansas	85,784	\$10,814,408	\$10.51
Missouri	314,012	\$31,618,409	\$8.39
Montana	35,494	\$4,688,326	\$11.01
Nebraska	52,082	\$8,424,669	\$13.48
North Dakota	21,825	\$3,611,520	\$13.79
South Dakota	26,189	\$4,000,604	\$12.73
Utah	53,715	\$14,590,016	\$22.63
Wyoming	9,564	\$823,964	\$7.18
Alaska	21,976	\$8,088,551	\$30.67
Arizona	258,517	\$23,859,983	\$7.69
California	914,161	\$206,834,598	\$18.85
Guam	8,295	\$539,994	\$5.42
Hawaii	48,824	\$8,226,466	\$14.04
Idaho	40,835	\$5,609,735	\$11.45
Nevada	67,380	\$9,380,988	\$11.60
Oregon	243,257	\$31,335,252	\$10.73
Washington	292,515	\$26,256,878	\$7.48
US	12,728,981	\$1,650,860,040	\$10.81

TABLE 10: Supplemental Nutrition Assistance Program Federal Share of Total State Cost per Case per Month - FY 2008

STATE	Households Participating (Monthly)	Federal Share Total Costs	Federal Total Cost Per Case per Month
Connecticut	120,573	\$26,199,231	\$18.11
Maine	86,459	\$12,354,470	\$11.91
Massachusetts	266,430	\$47,084,007	\$14.73
New Hampshire	31,244	\$6,248,917	\$16.67
New York	1,036,676	\$319,238,285	\$25.66
Rhode Island	41,548	\$8,327,798	\$16.70
Vermont	27,642	\$8,455,094	\$25.49
Delaware	32,512	\$15,597,154	\$39.98
District of Columbia	47,721	\$15,387,060	\$26.87
Maryland	167,174	\$42,338,190	\$21.10
New Jersey	210,867	\$101,407,258	\$40.08
Pennsylvania	558,939	\$154,829,823	\$23.08
Virgin Islands	5,036	\$4,544,094	\$75.19
Virginia	245,592	\$86,085,387	\$29.21
West Virginia	124,183	\$15,223,927	\$10.22
Alabama	231,740	\$32,823,684	\$11.80
Florida	745,847	\$76,765,607	\$8.58
Georgia	417,427	\$69,663,527	\$13.91
Kentucky	283,752	\$38,453,140	\$11.29
Mississippi	188,498	\$27,860,614	\$12.32
North Carolina	419,127	\$68,448,221	\$13.61
South Carolina	255,702	\$18,249,024	\$5.95
Tennessee	410,458	\$48,826,274	\$9.91
Illinois	595,832	\$109,116,615	\$15.26
Indiana	267,802	\$56,913,500	\$17.71
Michigan	590,930	\$115,079,853	\$16.23
Minnesota	140,423	\$53,027,709	\$31.47
Ohio	526,800	\$116,679,075	\$18.46
Wisconsin	180,792	\$43,768,722	\$20.17
Arkansas	157,871	\$26,027,463	\$13.74
Louisiana	324,887	\$74,152,775	\$19.02
New Mexico	95,769	\$23,182,521	\$20.17
Oklahoma	176,483	\$38,539,210	\$18.20
Texas	994,786	\$173,225,711	\$14.51
Colorado	109,405	\$38,359,875	\$29.22
Iowa	117,632	\$21,557,326	\$15.27
Kansas	85,784	\$17,932,530	\$17.42
Missouri	314,012	\$50,243,055	\$13.33
Montana	35,494	\$9,124,596	\$21.42
Nebraska	52,082	\$13,961,388	\$22.34
North Dakota	21,825	\$6,418,983	\$24.51
South Dakota	26,189	\$7,953,122	\$25.31
Utah	53,715	\$23,247,829	\$36.07
Wyoming	9,564	\$5,137,803	\$44.77
Alaska	21,976	\$11,118,809	\$42.16
Arizona	258,517	\$46,454,582	\$14.97
California	914,161	\$510,126,304	\$46.50
Guam	8,295	\$1,898,814	\$19.08
Hawaii	48,824	\$13,464,033	\$22.98
Idaho	40,835	\$10,917,661	\$22.28
Nevada	67,380	\$13,770,397	\$17.03
Oregon	243,257	\$51,425,966	\$17.62
Washington	292,515	\$50,339,776	\$14.34
US	12,728,981	\$2,977,576,789	\$19.49

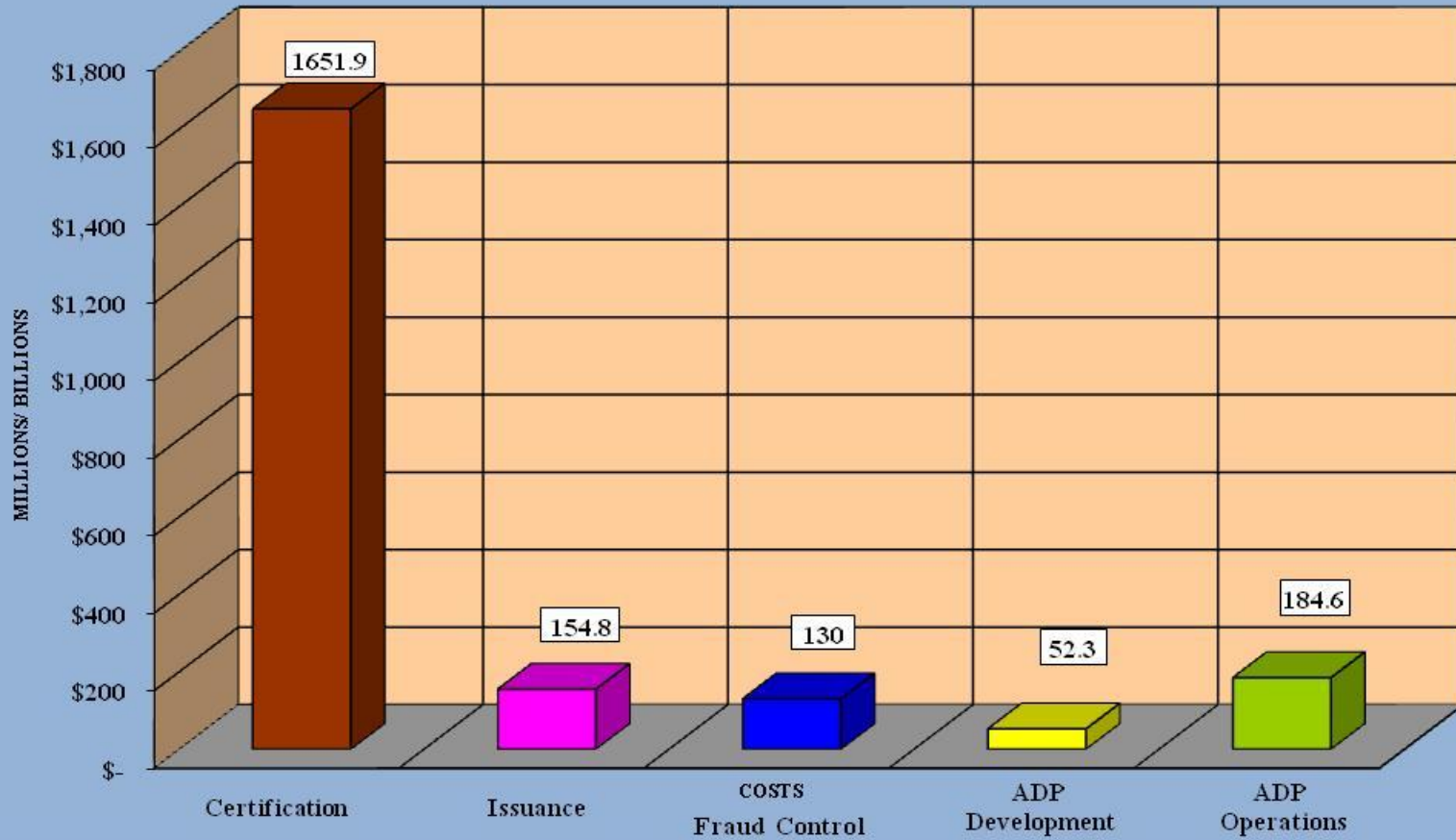
TABLE 11: Supplemental Nutrition Assistance Program State Administrative Costs - FY 2008

STATE	State Share Administrative Costs	Federal Share Administrative Costs	Total State Administrative Costs
Connecticut	\$28,558,495	\$26,199,231	\$54,757,726
Maine	\$13,440,169	\$12,354,470	\$25,794,639
Massachusetts	\$47,855,568	\$47,084,007	\$94,939,575
New Hampshire	\$7,084,132	\$6,248,917	\$13,333,049
New York	\$387,439,257	\$319,238,285	\$706,677,542
Rhode Island	\$8,484,245	\$8,327,798	\$16,812,043
Vermont	\$8,430,798	\$8,455,094	\$16,885,892
Delaware	\$16,321,883	\$15,597,154	\$31,919,037
District of Columbia	\$18,197,466	\$15,387,060	\$33,584,526
Maryland	\$43,730,975	\$42,338,190	\$86,069,165
New Jersey	\$105,394,431	\$101,407,258	\$206,801,689
Pennsylvania	\$147,130,505	\$154,829,823	\$301,960,328
Virgin Islands	\$4,093,741	\$4,544,094	\$8,637,835
Virginia	\$84,922,843	\$86,085,387	\$171,008,230
West Virginia	\$14,383,870	\$15,223,927	\$29,607,797
Alabama	\$34,121,217	\$32,823,684	\$66,944,901
Florida	\$96,704,581	\$76,765,607	\$173,470,188
Georgia	\$65,497,198	\$69,663,527	\$135,160,725
Kentucky	\$44,123,193	\$38,453,140	\$82,576,333
Mississippi	\$27,856,416	\$27,860,614	\$55,717,030
North Carolina	\$67,861,805	\$68,448,221	\$136,310,026
South Carolina	\$19,865,482	\$18,249,024	\$38,114,506
Tennessee	\$48,696,588	\$48,826,274	\$97,522,862
Illinois	\$118,021,711	\$109,116,615	\$227,138,326
Indiana	\$57,685,304	\$56,913,500	\$114,598,804
Michigan	\$126,567,644	\$115,079,853	\$241,647,497
Minnesota	\$57,514,312	\$53,027,709	\$110,542,021
Ohio	\$118,353,394	\$116,679,075	\$235,032,469
Wisconsin	\$41,419,700	\$43,768,722	\$85,188,422
Arkansas	\$27,407,559	\$26,027,463	\$53,435,022
Louisiana	\$74,739,547	\$74,152,775	\$148,892,322
New Mexico	\$22,544,764	\$23,182,521	\$45,727,285
Oklahoma	\$42,389,695	\$38,539,210	\$80,928,905
Texas	\$166,266,832	\$173,225,711	\$339,492,543
Colorado	\$37,792,442	\$38,359,875	\$76,152,317
Iowa	\$23,220,552	\$21,557,326	\$44,777,878
Kansas	\$20,608,513	\$17,932,530	\$38,541,043
Missouri	\$47,533,583	\$50,243,055	\$97,776,638
Montana	\$8,526,844	\$9,124,596	\$17,651,440
Nebraska	\$13,597,497	\$13,961,388	\$27,558,885
North Dakota	\$6,625,171	\$6,418,983	\$13,044,154
South Dakota	\$6,500,503	\$7,953,122	\$14,453,625
Utah	\$24,236,600	\$23,247,829	\$47,484,429
Wyoming	\$5,864,866	\$5,137,803	\$11,002,669
Alaska	\$11,276,944	\$11,118,809	\$22,395,753
Arizona	\$52,598,945	\$46,454,582	\$99,053,527
California	\$597,651,660	\$510,126,304	\$1,107,777,964
Guam	\$1,447,837	\$1,898,814	\$3,346,651
Hawaii	\$13,190,357	\$13,464,033	\$26,654,390
Idaho	\$12,056,528	\$10,917,661	\$22,974,189
Nevada	\$15,726,320	\$13,770,397	\$29,496,717
Oregon	\$55,912,922	\$51,425,966	\$107,338,888
Washington	\$54,368,063	\$50,339,776	\$104,707,839
US	\$3,201,841,467	\$2,977,576,789	\$6,179,418,256

TABLE 12: Supplemental Nutrition Assistance Program Administrative Cost Per Case per Month - FY 2008

STATE	Households Participating (Monthly)	Total State Administrative Costs	State Admin. Cost Per Case per Month
Connecticut	120,573	\$54,757,726	\$37.85
Maine	86,459	\$25,794,639	\$24.86
Massachusetts	266,430	\$94,939,575	\$29.69
New Hampshire	31,244	\$13,333,049	\$35.56
New York	1,036,676	\$706,677,542	\$56.81
Rhode Island	41,548	\$16,812,043	\$33.72
Vermont	27,642	\$16,885,892	\$50.91
Delaware	32,512	\$31,919,037	\$81.81
District of Columbia	47,721	\$33,584,526	\$58.65
Maryland	167,174	\$86,069,165	\$42.90
New Jersey	210,867	\$206,801,689	\$81.73
Pennsylvania	558,939	\$301,960,328	\$45.02
Virgin Islands	5,036	\$8,637,835	\$142.94
Virginia	245,592	\$171,008,230	\$58.03
West Virginia	124,183	\$29,607,797	\$19.87
Alabama	231,740	\$66,944,901	\$24.07
Florida	745,847	\$173,470,188	\$19.38
Georgia	417,427	\$135,160,725	\$26.98
Kentucky	283,752	\$82,576,333	\$24.25
Mississippi	188,498	\$55,717,030	\$24.63
North Carolina	419,127	\$136,310,026	\$27.10
South Carolina	255,702	\$38,114,506	\$12.42
Tennessee	410,458	\$97,522,862	\$19.80
Illinois	595,832	\$227,138,326	\$31.77
Indiana	267,802	\$114,598,804	\$35.66
Michigan	590,930	\$241,647,497	\$34.08
Minnesota	140,423	\$110,542,021	\$65.60
Ohio	526,800	\$235,032,469	\$37.18
Wisconsin	180,792	\$85,188,422	\$39.27
Arkansas	157,871	\$53,435,022	\$28.21
Louisiana	324,887	\$148,892,322	\$38.19
New Mexico	95,769	\$45,727,285	\$39.79
Oklahoma	176,483	\$80,928,905	\$38.21
Texas	994,786	\$339,492,543	\$28.44
Colorado	109,405	\$76,152,317	\$58.00
Iowa	117,632	\$44,777,878	\$31.72
Kansas	85,784	\$38,541,043	\$37.44
Missouri	314,012	\$97,776,638	\$25.95
Montana	35,494	\$17,651,440	\$41.44
Nebraska	52,082	\$27,558,885	\$44.10
North Dakota	21,825	\$13,044,154	\$49.81
South Dakota	26,189	\$14,453,625	\$45.99
Utah	53,715	\$47,484,429	\$73.67
Wyoming	9,564	\$11,002,669	\$95.87
Alaska	21,976	\$22,395,753	\$84.93
Arizona	258,517	\$99,053,527	\$31.93
California	914,161	\$1,107,777,964	\$100.98
Guam	8,295	\$3,346,651	\$33.62
Hawaii	48,824	\$26,654,390	\$45.49
Idaho	40,835	\$22,974,189	\$46.88
Nevada	67,380	\$29,496,717	\$36.48
Oregon	243,257	\$107,338,888	\$36.77
Washington	292,515	\$104,707,839	\$29.83
US	12,728,981	\$6,179,418,256	\$40.46

FEDERAL SHARE OF SELECTED STATE ADMINISTRATIVE COSTS FY 2008



FAIR HEARINGS



NOTABLE TRENDS

Fair Hearings

SNAP regulations provide recourse to households that have their benefits denied or their allotment reduced, suspended or cancelled as a result of an adverse decision by the State agency. This recourse is called the fair hearing process. The number of fair hearings conducted by States is reported annually on Form FNS-366B, the Program Activity Statement.

In FY 2008, the number of fair hearings increased by 8.20 percent. Nationally, approximately 4.4 hearings were conducted for every 1,000 households participating in FY 2007. In FY 2008, 72.26 percent of fair hearings upheld the caseworker's decision compared to 72.5 percent in FY 2007. A total of 38 States had case worker decisions affirmed in at least 75 percent of the hearings.



TABLE 13: Supplemental Nutrition Assistance Program Fair Hearings Upheld and Reversed - FY 2008

STATE	Fair Hearings Upheld	Fair Hearings Reversed	Percent Upheld
Connecticut	224	109	67.27%
Maine	55	8	87.30%
Massachusetts	655	333	66.30%
New Hampshire	6	0	100.00%
New York	1,454	4,864	23.01%
Rhode Island	23	2	92.00%
Vermont	20	1	95.24%
Delaware	36	22	62.07%
District of Columbia	0	0	N/A
Maryland	79	10	88.76%
New Jersey	34	6	85.00%
Pennsylvania	7,813	1,048	88.17%
Virgin Islands	1	1	50.00%
Virginia	317	43	88.06%
West Virginia	46	12	79.31%
Alabama	187	18	91.22%
Florida	479	189	71.71%
Georgia	1,386	51	96.45%
Kentucky	86	23	78.90%
Mississippi	249	1	99.60%
North Carolina	1,157	19	98.38%
South Carolina	224	28	88.89%
Tennessee	4,076	661	86.05%
Illinois	191	37	83.77%
Indiana	83	182	31.32%
Michigan	669	146	82.09%
Minnesota	919	162	85.01%
Ohio	2,262	2,302	49.56%
Wisconsin	787	689	53.32%
Arkansas	276	17	94.20%
Louisiana	242	15	94.16%
New Mexico	59	11	84.29%
Oklahoma	8	27	22.86%
Texas	10,281	2,642	79.56%
Colorado	58	47	55.24%
Iowa	145	37	79.67%
Kansas	150	2	98.68%
Missouri	444	93	82.68%
Montana	54	33	62.07%
Nebraska	193	42	82.13%
North Dakota	3	1	75.00%
South Dakota	19	1	95.00%
Utah	20	2	90.91%
Wyoming	5	1	83.33%
Alaska	49	5	90.74%
Arizona	249	213	53.90%
California	2,000	1,143	63.63%
Guam	10	3	76.92%
Hawaii	24	1	96.00%
Idaho	140	14	90.91%
Nevada	50	2	96.15%
Oregon	124	9	93.23%
Washington	2,610	308	89.44%
US	40,731	15,636	72.26%

FRAUD INVESTIGATIONS, PROSECUTIONS, AND ADMINISTRATIVE DISQ. HEARINGS



NOTABLE TRENDS

Fraud Control

In FY 2008, State fraud investigations increased to 724,949 compared to 783,725 in FY 2007, an 8.11 percent increase.

Fraud investigations are broken into pre-certification investigations and post-certification investigations. Pre-certification investigations are cases referred for investigation and completed prior to certification. Investigators assist in front-end detection by acting on referrals in suspicious cases and probing more deeply into a client's circumstances. Positive pre-certification investigations prevent fraud at intake and before a dollar loss can occur; they may also result in hearings/prosecutions that lead to disqualification (without a claim being established). On the other hand, post-certification investigations are investigations completed after certification. Positive post-certification investigations may result in an administrative disqualification hearing or prosecution, the disqualification of the individual who has committed an intentional program violation, and the establishment of a claim to recover the overissuance.

Both prosecution and administrative fraud hearing activity declined from the previous year. In FY 2008, the number of recipients disqualified from the Food Stamp Program for an intentional program violation decreased to 48,311, a 5.34 percent decrease from the previous year. About 71 percent of the disqualifications came out of the administrative fraud hearing process, a figure similar to the prior year.

On the Federal level, FNS operates the Electronic Disqualified Recipient Subsystem (EDRS). EDRS is a centralized national database, utilizing data submitted each month by all 50 States, the District of Columbia, Guam, and the Virgin Islands, that tracks individuals disqualified from participation in the FSP for intentional program violations. EDRS assists States in assigning the correct penalty, which varies by the type and number of the offense, to individuals being disqualified. It also assists States in preventing these individuals from crossing State lines and participating in another State during the period of their disqualification. Because an individual may be permanently disqualified, these records are held indefinitely. As of September 2008, this Federal database had records on over 1,125,837 recipients and over 1,207,481 disqualifications.



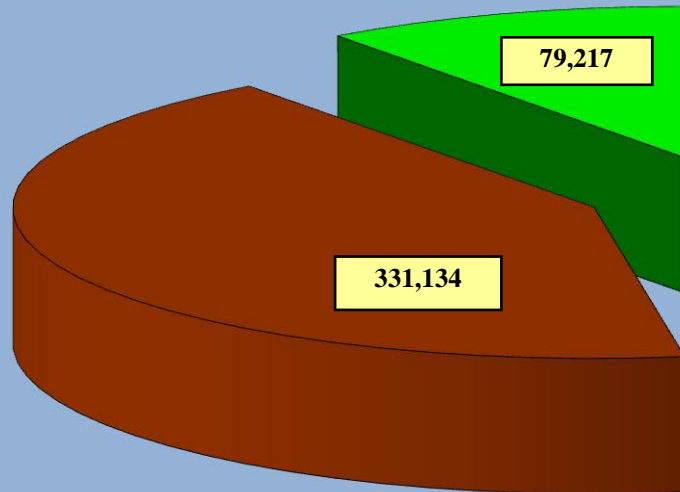
TABLE 14: Supplemental Nutrition Assistance Program Recipient Fraud Investigations - FY 2008

STATE	Pre-cert Investigations Negative	Pre-cert Investigations Positive	Post-Cert Investigations Negative	Post-Cert Investigations Positive	Total Investigations Completed	Fraud Dollars Determined by Post-Cert Investigations
Connecticut	1,304	1,071	204	84	2,663	\$180,914
Maine	0	1	137	22	160	\$26,775
Massachusetts	0	0	2,554	639	3,193	\$1,150,218
New Hampshire	81	41	971	108	1,201	\$250,105
New York	96,745	40,194	10,670	13,565	161,174	\$6,598,959
Rhode Island	1,240	370	188	12	1,810	\$39,872
Vermont	10	7	75	101	193	\$12,691
Delaware	833	315	60,188	708	62,044	\$705,314
District of Columbia	72	208	409	328	1,017	\$551,287
Maryland	0	2	460	138	600	\$62,335
New Jersey	2,377	2,172	8,838	2,707	16,094	\$2,551,980
Pennsylvania	9,529	9,612	1,739	947	21,827	\$1,886,794
Virgin Islands	123	882	2	11	1,018	\$55,411
Virginia	356	569	7,417	1,287	9,629	\$1,939,418
West Virginia	9	173	486	589	1,257	\$1,438,642
Alabama	215	274	1,149	341	1,979	\$820,921
Florida	3,445	20,082	23,526	4,392	51,445	\$5,732,274
Georgia	3,591	1,750	4,569	4,196	14,106	\$9,068,577
Kentucky	130	178	128	699	1,135	\$2,411,523
Mississippi	0	0	0	1,090	1,090	\$1,117,597
North Carolina	226	83	9,144	1,726	11,179	\$2,915,546
South Carolina	0	0	0	7,130	7,130	\$561,979
Tennessee	0	0	4,785	2,828	7,613	\$9,114,038
Illinois	1,569	2,819	248	488	5,124	\$2,327,014
Indiana	92	2	673	105	872	\$231,750
Michigan	535	964	1,264	3,310	6,073	\$5,867,573
Minnesota	2,723	2,354	391	850	6,318	\$1,009,790
Ohio	1,629	1,179	22,064	2,004	26,876	\$3,166,035
Wisconsin	1,242	595	431	934	3,202	\$1,400,246
Arkansas	57	139	527	597	1,320	\$1,112,338
Louisiana	0	0	228	695	923	\$1,150,022
New Mexico	0	0	289	47	336	\$248,901
Oklahoma	0	0	2,952	439	3,391	\$1,028,488
Texas	0	0	1,487	9,092	10,579	\$14,738,627
Colorado	377	299	3,838	1,085	5,599	\$1,612,076
Iowa	468	1,485	6	276	2,235	\$634,324
Kansas	305	416	454	958	2,133	\$1,542,443
Missouri	0	0	304	964	1,268	\$1,428,849
Montana	7	0	223	130	360	\$64,671
Nebraska	76	162	27	37	302	\$171,665
North Dakota	0	0	3	0	3	\$0
South Dakota	28	113	161	285	587	\$346,449
Utah	605	60	2,627	937	4,229	\$1,420,371
Wyoming	0	0	137	26	163	\$16,111
Alaska	284	244	308	128	964	\$168,359
Arizona	528	995	2,610	7,971	12,104	\$682,440
California	96,337	39,325	151,134	2,612	289,408	\$1,044,800
Guam	0	0	312	75	387	\$108,699
Hawaii	0	0	580	208	788	\$609,045
Idaho	0	0	247	377	624	\$428,505
Nevada	555	1,351	299	448	2,653	\$1,027,755
Oregon	0	0	1,596	312	1,908	\$295,200
Washington	6,775	6,410	75	179	13,439	\$430,220
US	234,478	136,896	333,134	79,217	783,725	\$93,505,936

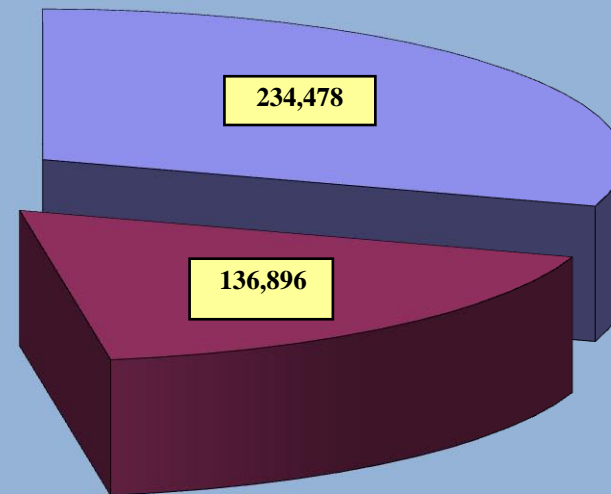
RECIPIENT FRAUD INVESTIGATIONS

FY 2008

Post-Cert Investigations
Positive



Pre-Cert Investigations
Negative



Post-Cert Investigations
Negative

Pre-Cert Investigations
Positive

TABLE 15: Supplemental Nutrition Assistance Program State Prosecutions - FY 2008

STATE	Disqualification Consent Agreement	Convictions	Acquittals	Total Disqualifications From Prosecutions
Connecticut	0	4	0	4
Maine	0	6	0	6
Massachusetts	0	26	16	26
New Hampshire	0	66	0	66
New York	564	396	4	960
Rhode Island	1	2	1	3
Vermont	0	2	0	2
Delaware	0	37	0	37
District of Columbia	4	6	0	10
Maryland	0	8	1	8
New Jersey	12	69	0	81
Pennsylvania	363	304	5	667
Virgin Islands	0	0	0	0
Virginia	0	178	8	178
West Virginia	0	58	0	58
Alabama	0	100	0	100
Florida	0	280	4	280
Georgia	1,607	25	2	1,632
Kentucky	0	108	2	108
Mississippi	1,052	38	0	1,090
North Carolina	5	207	0	212
South Carolina	0	11	0	11
Tennessee	0	87	0	87
Illinois	0	21	0	21
Indiana	0	13	0	13
Michigan	1,865	315	0	2,180
Minnesota	0	154	11	154
Ohio	1,445	294	9	1,739
Wisconsin	10	10	0	20
Arkansas	3	24	0	27
Louisiana	23	51	0	74
New Mexico	0	0	4	0
Oklahoma	535	20	2	555
Texas	634	688	104	1,322
Colorado	0	41	2	41
Iowa	0	14	0	14
Kansas	42	107	0	149
Missouri	2	10	0	12
Montana	0	0	0	0
Nebraska	0	5	0	5
North Dakota	1	0	0	1
South Dakota	0	3	0	3
Utah	0	15	0	15
Wyoming	0	1	0	1
Alaska	0	8	0	8
Arizona	0	9	0	9
California	96	1,725	1	1,821
Guam	0	0	0	0
Hawaii	29	37	5	66
Idaho	5	15	1	20
Nevada	0	14	0	14
Oregon	7	2	0	9
Washington	0	10	0	10
US	8,305	5,624	182	13,929

TABLE 16: Supplemental Nutrition Assistance Program State Prosecutions - FY 2008

	Disq. Consent Agreements and Convictions	Amount of Fraud Determined	Average Amount of Fraud per DCA or Conviction
STATE			
Connecticut	4	\$9,525	\$2,381
Maine	6	\$33,601	\$5,600
Massachusetts	26	\$34,487	\$1,326
New Hampshire	66	\$175,927	\$2,666
New York	960	\$1,701,421	\$1,772
Rhode Island	3	\$1,631	\$544
Vermont	2	\$15,949	\$7,975
Delaware	37	\$105,136	\$2,842
District of Columbia	10	\$40,235	\$4,024
Maryland	8	\$58,007	\$7,251
New Jersey	81	\$156,159	\$1,928
Pennsylvania	667	\$1,656,395	\$2,483
Virgin Islands	0	\$0	N/A
Virginia	178	\$466,009	\$2,618
West Virginia	58	\$291,191	\$5,021
Alabama	100	\$294,511	\$2,945
Florida	280	\$715,655	\$2,556
Georgia	1,632	\$4,686,903	\$2,872
Kentucky	108	\$400,665	\$3,710
Mississippi	1,090	\$1,191,723	\$1,093
North Carolina	212	\$635,068	\$2,996
South Carolina	11	\$48,265	\$4,388
Tennessee	87	\$206,119	\$2,369
Illinois	21	\$227,630	\$10,840
Indiana	13	\$90,872	\$6,990
Michigan	2,180	\$4,577,362	\$2,100
Minnesota	154	\$275,584	\$1,790
Ohio	1,739	\$1,604,733	\$923
Wisconsin	20	\$86,846	\$4,342
Arkansas	27	\$95,308	\$3,530
Louisiana	74	\$341,573	\$4,616
New Mexico	0	\$0	N/A
Oklahoma	555	\$99,526	\$179
Texas	1,322	\$1,846,421	\$1,397
Colorado	41	\$29,669	\$724
Iowa	14	\$60,430	\$4,316
Kansas	149	\$871,382	\$5,848
Missouri	12	\$94,037	\$7,836
Montana	0	\$0	N/A
Nebraska	5	\$22,726	\$4,545
North Dakota	1	\$188	\$188
South Dakota	3	\$25,900	\$8,633
Utah	15	\$84,228	\$5,615
Wyoming	1	\$17,558	\$17,558
Alaska	8	\$27,282	\$3,410
Arizona	9	\$36,147	\$4,016
California	1,821	\$728,400	\$400
Guam	0	\$0	N/A
Hawaii	66	\$406,749	\$6,163
Idaho	20	\$98,969	\$4,948
Nevada	14	\$149,810	\$10,701
Oregon	9	\$9,600	\$1,067
Washington	10	\$34,920	\$3,492
US	13,929	\$24,868,432	\$1,785

TABLE 17: Supplemental Nutrition Assistance Program Administrative Disqualification Hearings - FY 2008

STATE	Waived Hearings	Hearing Convictions Upheld	Hearings Acquittals	Total Disq. from Admin. Disq. Hearings
Connecticut	58	11	0	69
Maine	10	34	10	44
Massachusetts	9	438	29	447
New Hampshire	28	0	0	28
New York	543	766	110	1,309
Rhode Island	0	0	0	0
Vermont	85	2	1	87
Delaware	31	1	3	32
District of Columbia	1	1	2	2
Maryland	71	16	2	87
New Jersey	815	18	0	833
Pennsylvania	31	10	0	41
Virgin Islands	7	3	0	10
Virginia	561	115	23	676
West Virginia	100	30	6	130
Alabama	115	131	5	246
Florida	2,547	929	68	3,476
Georgia	887	662	16	1,549
Kentucky	7	77	27	84
Mississippi	151	1,830	19	1,981
North Carolina	486	973	0	1,459
South Carolina	768	313	7	1,081
Tennessee	1,616	2,176	0	3,792
Illinois	439	916	25	1,355
Indiana	57	143	1	200
Michigan	238	467	61	705
Minnesota	790	153	17	943
Ohio	909	299	40	1,208
Wisconsin	31	1	0	32
Arkansas	331	145	4	476
Louisiana	203	270	18	473
New Mexico	37	49	12	86
Oklahoma	341	28	10	369
Texas	3,161	2,366	227	5,527
Colorado	335	345	18	680
Iowa	0	143	24	143
Kansas	2	25	1	27
Missouri	431	96	5	527
Montana	686	106	3	792
Nebraska	31	49	1	80
North Dakota	69	9	0	78
South Dakota	100	19	1	119
Utah	42	354	75	396
Wyoming	18	6	0	24
Alaska	97	31	0	128
Arizona	4	17	3	21
California	72	103	8	175
Guam	75	0	0	75
Hawaii	237	53	5	290
Idaho	244	19	4	263
Nevada	449	556	12	1,005
Oregon	714	2	0	716
Washington	0	6	0	6
US	19,070	15,312	903	34,382

TABLE 18: Supplemental Nutrition Assistance Program Administrative Disqualification Hearings - FY 2008

STATE	Waived and Upheld Hearings	Amount of Fraud Determined	Average Amount of Fraud per Waived or Upheld Hearing
Connecticut	69	\$34,561	\$501
Maine	44	\$240,643	\$5,469
Massachusetts	447	\$444,044	\$993
New Hampshire	28	\$20,571	\$735
New York	1,309	\$269,890	\$206
Rhode Island	0	\$0	N/A
Vermont	87	\$215,592	\$2,478
Delaware	32	\$4,160	\$130
District of Columbia	2	\$2,291	\$1,146
Maryland	87	\$35,617	\$409
New Jersey	833	\$1,177,347	\$1,413
Pennsylvania	41	\$43,418	\$1,059
Virgin Islands	10	\$34,833	\$3,483
Virginia	676	\$80,300	\$119
West Virginia	130	\$293,716	\$2,259
Alabama	246	\$289,828	\$1,178
Florida	3,476	\$2,190,715	\$630
Georgia	1,549	\$1,929,972	\$1,246
Kentucky	84	\$51,223	\$610
Mississippi	1,981	\$1,379,347	\$696
North Carolina	1,459	\$2,371,991	\$1,626
South Carolina	1,081	\$1,545,628	\$1,430
Tennessee	3,792	\$7,352,413	\$1,939
Illinois	1,355	\$1,554,659	\$1,147
Indiana	200	\$337,136	\$1,686
Michigan	705	\$798,435	\$1,133
Minnesota	943	\$728,421	\$772
Ohio	1,208	\$541,574	\$448
Wisconsin	32	\$84,662	\$2,646
Arkansas	476	\$359,588	\$755
Louisiana	473	\$565,009	\$1,195
New Mexico	86	\$248,901	\$2,894
Oklahoma	369	\$530,044	\$1,436
Texas	5,527	\$4,247,359	\$768
Colorado	680	\$464,809	\$684
Iowa	143	\$262,647	\$1,837
Kansas	27	\$34,610	\$1,282
Missouri	527	\$682,741	\$1,296
Montana	792	\$482,156	\$609
Nebraska	80	\$176,590	\$2,207
North Dakota	78	\$18,623	\$239
South Dakota	119	\$167,313	\$1,406
Utah	396	\$483,477	\$1,221
Wyoming	24	\$36,514	\$1,521
Alaska	128	\$168,359	\$1,315
Arizona	21	\$112,792	\$5,371
California	175	\$509,547	\$2,912
Guam	75	\$108,699	\$1,449
Hawaii	290	\$271,265	\$935
Idaho	263	\$484,718	\$1,843
Nevada	1,005	\$287,455	\$286
Oregon	716	\$1,281,600	\$1,790
Washington	6	\$6,283	\$1,047
US	34,382	\$36,044,086	\$1,048

TABLE 19: Supplemental Nutrition Assistance Program Average Amount of Fraud per Hearing or Prosecution - FY 2008

STATE	Average Amount of Fraud per Waived or Upheld Hearing	Average Amount of Fraud per DCA or Conviction
Connecticut	\$501	\$2,381
Maine	\$5,469	\$5,600
Massachusetts	\$993	\$1,326
New Hampshire	\$735	\$2,666
New York	\$206	\$1,772
Rhode Island	N/A	\$544
Vermont	\$2,478	\$7,975
Delaware	\$130	\$2,842
District of Columbia	\$1,146	\$4,024
Maryland	\$409	\$7,251
New Jersey	\$1,413	\$1,928
Pennsylvania	\$1,059	\$2,483
Virgin Islands	\$3,483	N/A
Virginia	\$119	\$2,618
West Virginia	\$2,259	\$5,021
Alabama	\$1,178	\$2,945
Florida	\$630	\$2,556
Georgia	\$1,246	\$2,872
Kentucky	\$610	\$3,710
Mississippi	\$696	\$1,093
North Carolina	\$1,626	\$2,996
South Carolina	\$1,430	\$4,388
Tennessee	\$1,939	\$2,369
Illinois	\$1,147	\$10,840
Indiana	\$1,686	\$6,990
Michigan	\$1,133	\$2,100
Minnesota	\$772	\$1,790
Ohio	\$448	\$923
Wisconsin	\$2,646	\$4,342
Arkansas	\$755	\$3,530
Louisiana	\$1,195	\$4,616
New Mexico	\$2,894	N/A
Oklahoma	\$1,436	\$179
Texas	\$768	\$1,397
Colorado	\$684	\$724
Iowa	\$1,837	\$4,316
Kansas	\$1,282	\$5,848
Missouri	\$1,296	\$7,836
Montana	\$609	N/A
Nebraska	\$2,207	\$4,545
North Dakota	\$239	\$188
South Dakota	\$1,406	\$8,633
Utah	\$1,221	\$5,615
Wyoming	\$1,521	\$17,558
Alaska	\$1,315	\$3,410
Arizona	\$5,371	\$4,016
California	\$2,912	\$400
Guam	\$1,449	N/A
Hawaii	\$935	\$6,163
Idaho	\$1,843	\$4,948
Nevada	\$286	\$10,701
Oregon	\$1,790	\$1,067
Washington	\$1,047	\$3,492
US	\$1,048	\$1,785

TABLE 20: Supplemental Nutrition Assistance Program Disqualification Determinations - FY 2008

STATE	Total Disqualifications From Prosecutions	Total Disqualifications from Admin. Disq. Hearings	Total Disqualified
Connecticut	4	69	73
Maine	6	44	50
Massachusetts	26	447	473
New Hampshire	66	28	94
New York	960	1,309	2,269
Rhode Island	3	0	3
Vermont	2	87	89
Delaware	37	32	69
District of Columbia	10	2	12
Maryland	8	87	95
New Jersey	81	833	914
Pennsylvania	667	41	708
Virgin Islands	0	10	10
Virginia	178	676	854
West Virginia	58	130	188
Alabama	100	246	346
Florida	280	3,476	3,756
Georgia	1,632	1,549	3,181
Kentucky	108	84	192
Mississippi	1,090	1,981	3,071
North Carolina	212	1,459	1,671
South Carolina	11	1,081	1,092
Tennessee	87	3,792	3,879
Illinois	21	1,355	1,376
Indiana	13	200	213
Michigan	2,180	705	2,885
Minnesota	154	943	1,097
Ohio	1,739	1,208	2,947
Wisconsin	20	32	52
Arkansas	27	476	503
Louisiana	74	473	547
New Mexico	0	86	86
Oklahoma	555	369	924
Texas	1,322	5,527	6,849
Colorado	41	680	721
Iowa	14	143	157
Kansas	149	27	176
Missouri	12	527	539
Montana	0	792	792
Nebraska	5	80	85
North Dakota	1	78	79
South Dakota	3	119	122
Utah	15	396	411
Wyoming	1	24	25
Alaska	8	128	136
Arizona	9	21	30
California	1,821	175	1,996
Guam	0	75	75
Hawaii	66	290	356
Idaho	20	263	283
Nevada	14	1,005	1,019
Oregon	9	716	725
Washington	10	6	16
US	13,929	34,382	48,311

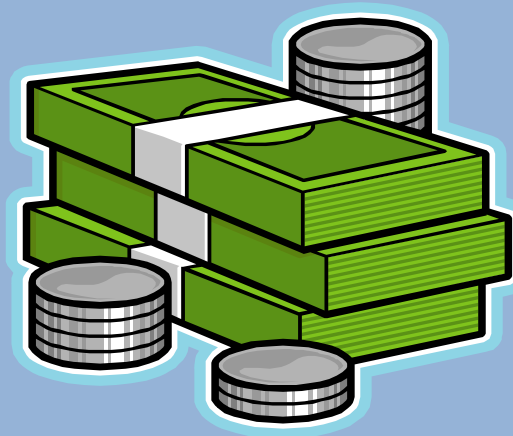
DISQUALIFIED RECIPIENTS



TABLE 21: Supplemental Nutrition Assistance Program Federal Disqualified Recipients Database as of September 30, 2009

STATE	Total Recipients In Database	Total Disqualifications In Database
Connecticut	2,433	2,474
Maine	1,482	1,494
Massachusetts	13,288	14,026
New Hampshire	3,615	3,751
New York	52,710	54,624
Rhode Island	1,242	1,429
Vermont	2,093	2,250
Delaware	908	923
District of Columbia	1,341	1,394
Maryland	7,646	8,459
New Jersey	31,893	38,266
Pennsylvania	33,784	34,609
Virgin Islands	430	433
Virginia	19,827	20,996
West Virginia	8,972	9,303
Alabama	30,860	32,818
Florida	62,080	65,865
Georgia	104,036	118,262
Kentucky	23,996	25,135
Mississippi	71,373	78,931
North Carolina	35,900	37,697
South Carolina	29,877	32,518
Tennessee	48,302	53,081
Illinois	24,284	24,885
Indiana	9,796	9,813
Michigan	68,587	72,247
Minnesota	21,305	22,904
Ohio	40,937	43,978
Wisconsin	8,280	8,846
Arkansas	3,552	3,640
Louisiana	19,517	20,121
New Mexico	1,259	1,310
Oklahoma	10,081	10,522
Texas	69,899	72,869
Colorado	27,528	29,425
Iowa	2,793	2,952
Kansas	11,687	12,939
Missouri	44,902	48,293
Montana	7,338	7,800
Nebraska	1,585	1,670
North Dakota	4,648	5,162
South Dakota	3,010	3,212
Utah	4,182	4,979
Wyoming	1,613	1,752
Alaska	2,724	2,882
Arizona	9,204	9,478
California	85,273	88,442
Guam	946	953
Hawaii	13,521	14,676
Idaho	6,456	7,129
Nevada	10,031	10,420
Oregon	19,634	22,072
Washington	3,177	3,372
US	1,125,837	1,207,481

RECIPIENT CLAIMS



NOTABLE TRENDS

Recipient Claim Collections

Recipient claims are established against any household that has received more food stamp benefits than it is entitled to receive. Claims fall in three categories: intentional program violation (fraud claims), inadvertent household error, or agency error. State agencies are entitled to 35 percent of fraud claims and certain inadvertent household error claims collected and 20 percent of the remaining inadvertent household error claims collected.

In FY 2008, State agencies established \$330.7 million in new claims against households for overissuances and collected \$270.7 million. The average new claim established was for \$503. Collections increased 27.36 percent in FY 2008. Collections via recoupment, in which the State agency uses a part of the benefit otherwise payable to the household to pay an outstanding claim, decreased in FY 2008.

During the fiscal year \$118.5 million out of the total State agency collections reported above was collected by the Federal Government through the Treasury Offset Program (TOP). As a participating partner in this program, State agencies notify the household and then send the delinquent claims through FNS to Treasury for possible collection under this program.

This Federal program offsets amounts from any eligible Federal payment otherwise due a household and uses those funds to pay outstanding claims. The collections are made by Treasury on behalf of the FSP. The Federal collections make up almost 44 percent of total State agency collections for FY 2008. In FY 2008, all State agencies participated in the Federal debt collection program. Since its inception in FY 1992, the Federal debt collection program has collected \$1.051 billion in food stamp recipient claims.

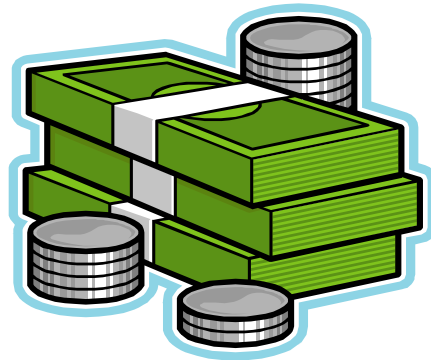


TABLE 22: Supplemental Nutrition Assistance Program New Claims Established - FY 2008

STATE	Fraud Claims Established	Household Error Established	Agency Error Established	Total Claims Established
Connecticut	\$49,581	\$536,167	\$475,604	\$1,061,352
Maine	\$181,009	\$818,332	\$512,299	\$1,511,641
Massachusetts	\$537,031	\$983,864	\$97,050	\$1,617,946
New Hampshire	\$234,896	\$181,626	\$48,295	\$464,817
New York	\$1,617,994	\$2,835,839	\$1,465,673	\$5,919,506
Rhode Island	\$13,744	\$249,814	\$129,169	\$392,727
Vermont	\$136,182	\$236,532	\$64,949	\$437,663
Delaware	\$25,885	\$633,213	\$32,442	\$691,540
District of Columbia	\$7,734	\$1,333,173	\$44,873	\$1,385,780
Maryland	\$113,587	\$1,358,146	\$503,715	\$1,975,448
New Jersey	\$391,908	\$7,221,678	\$564,820	\$8,178,406
Pennsylvania	\$0	\$8,712,681	\$1,011,034	\$9,723,715
Virgin Islands	\$105	\$195,922	\$69,470	\$265,496
Virginia	\$985,410	\$2,455,768	\$707,164	\$4,148,342
West Virginia	\$537,655	\$1,050,746	\$615,230	\$2,203,631
Alabama	\$43,509	\$2,288,658	\$1,302,821	\$3,634,988
Florida	\$2,024	\$12,750,140	\$4,810,362	\$17,562,526
Georgia	\$6,553,774	\$1,989,546	\$2,023,793	\$10,567,114
Kentucky	\$157,635	\$4,185,149	\$761,895	\$5,104,679
Mississippi	\$807,034	\$3,611,736	\$440,132	\$4,858,902
North Carolina	\$610,123	\$6,670,534	\$2,104,417	\$9,385,074
South Carolina	\$39,893	\$7,169,448	\$1,071,629	\$8,280,969
Tennessee	\$2,063,751	\$11,189,536	\$839,118	\$14,092,405
Illinois	\$0	\$24,946,652	\$1,594,109	\$26,540,761
Indiana	\$507,326	\$1,063,874	\$238,896	\$1,810,096
Michigan	\$1,499,739	\$1,368,423	\$1,114,669	\$3,982,831
Minnesota	\$423,262	\$4,682,897	\$1,231,019	\$6,337,178
Ohio	\$1,397,326	\$6,220,285	\$2,242,272	\$9,859,883
Wisconsin	\$75,904	\$2,485,476	\$513,511	\$3,074,891
Arkansas	\$643,041	\$616,535	\$138,079	\$1,397,655
Louisiana	\$446,132	\$1,453,041	\$593,336	\$2,492,509
New Mexico	\$116,788	\$1,335,091	\$423,059	\$1,874,939
Oklahoma	\$198,744	\$1,065,692	\$136,231	\$1,400,666
Texas	\$2,408,084	\$14,329,091	\$1,943,177	\$18,680,352
Colorado	\$593,234	\$4,281,232	\$8,819,495	\$13,693,960
Iowa	\$1,317	\$1,051,619	\$279,370	\$1,332,306
Kansas	\$145,922	\$1,322,004	\$468,605	\$1,936,531
Missouri	\$42,078	\$3,207,395	\$522,688	\$3,772,161
Montana	\$141,288	\$768,068	\$401,136	\$1,310,492
Nebraska	\$0	\$755,286	\$439,085	\$1,194,371
North Dakota	\$29,598	\$180,053	\$138,025	\$347,676
South Dakota	\$84,649	\$488,068	\$69,900	\$642,617
Utah	\$36,529	\$791,645	\$329,321	\$1,157,495
Wyoming	\$0	\$57,990	\$12,484	\$70,474
Alaska	\$147,482	\$61,081	\$113,891	\$322,454
Arizona	\$42,923	\$1,324,797	\$565,938	\$1,933,658
California	\$1,142,162	\$47,512,036	\$49,622,376	\$98,276,574
Guam	\$0	\$135,922	\$67,163	\$203,085
Hawaii	\$182,193	\$1,294,022	\$364,025	\$1,840,240
Idaho	\$455,237	\$74,469	\$64,615	\$594,321
Nevada	\$231,347	\$199,615	\$83,091	\$514,053
Oregon	\$1,151,880	\$4,577,484	\$591,623	\$6,320,987
Washington	\$16,035	\$3,454,130	\$873,194	\$4,343,359
US	\$27,270,685	\$209,762,218	\$93,690,335	\$330,723,238

TABLE 23: Supplemental Nutrition Assistance Program Recipient Claims - Number of New Claims Established - FY 2008

STATE	Number of Fraud Claims Established	Number of Household Error Established	Number of Agency Error Established	Number of Total Claims Established
Connecticut	37	958	2,207	3,202
Maine	85	797	829	1,711
Massachusetts	560	1,802	145	2,507
New Hampshire	86	193	49	328
New York	1,052	3,445	2,527	7,024
Rhode Island	9	306	211	526
Vermont	78	435	90	603
Delaware	14	984	62	1,060
District of Columbia	2	906	79	987
Maryland	43	2,339	1,636	4,018
New Jersey	287	9,307	1,071	10,665
Pennsylvania	0	10,085	2,174	12,259
Virgin Islands	1	235	132	368
Virginia	713	2,531	1,712	4,956
West Virginia	261	1,534	1,542	3,337
Alabama	63	2,257	3,033	5,353
Florida	4	12,377	8,390	20,771
Georgia	2,696	2,312	5,616	10,624
Kentucky	60	2,526	1,453	4,039
Mississippi	904	3,795	781	5,480
North Carolina	341	5,919	3,017	9,277
South Carolina	27	5,446	1,555	7,028
Tennessee	624	6,352	877	7,853
Illinois	0	21,707	2,600	24,307
Indiana	207	806	336	1,349
Michigan	651	2,838	950	4,439
Minnesota	420	9,877	4,300	14,597
Ohio	1,050	10,688	4,866	16,604
Wisconsin	91	2,492	1,546	4,129
Arkansas	374	452	304	1,130
Louisiana	219	1,673	888	2,780
New Mexico	61	3,584	2,769	6,414
Oklahoma	91	728	252	1,071
Texas	2,540	15,215	2,867	20,622
Colorado	269	7,510	36,170	43,949
Iowa	2	1,109	1,013	2,124
Kansas	89	1,848	3,189	5,126
Missouri	29	2,772	1,080	3,881
Montana	97	928	1,865	2,890
Nebraska	0	1,422	1,642	3,064
North Dakota	28	358	775	1,161
South Dakota	73	1,704	365	2,142
Utah	26	677	595	1,298
Wyoming	0	125	60	185
Alaska	78	103	297	478
Arizona	17	1,620	1,090	2,727
California	538	112,458	235,037	348,033
Guam	0	119	75	194
Hawaii	97	1,918	1,401	3,416
Idaho	308	157	256	721
Nevada	198	254	266	718
Oregon	500	4,848	937	6,285
Washington	4	5,389	2,894	8,287
US	16,004	292,220	349,873	658,097

CLAIMS ESTABLISHED AND COLLECTED (MILLIONS) FY 2008

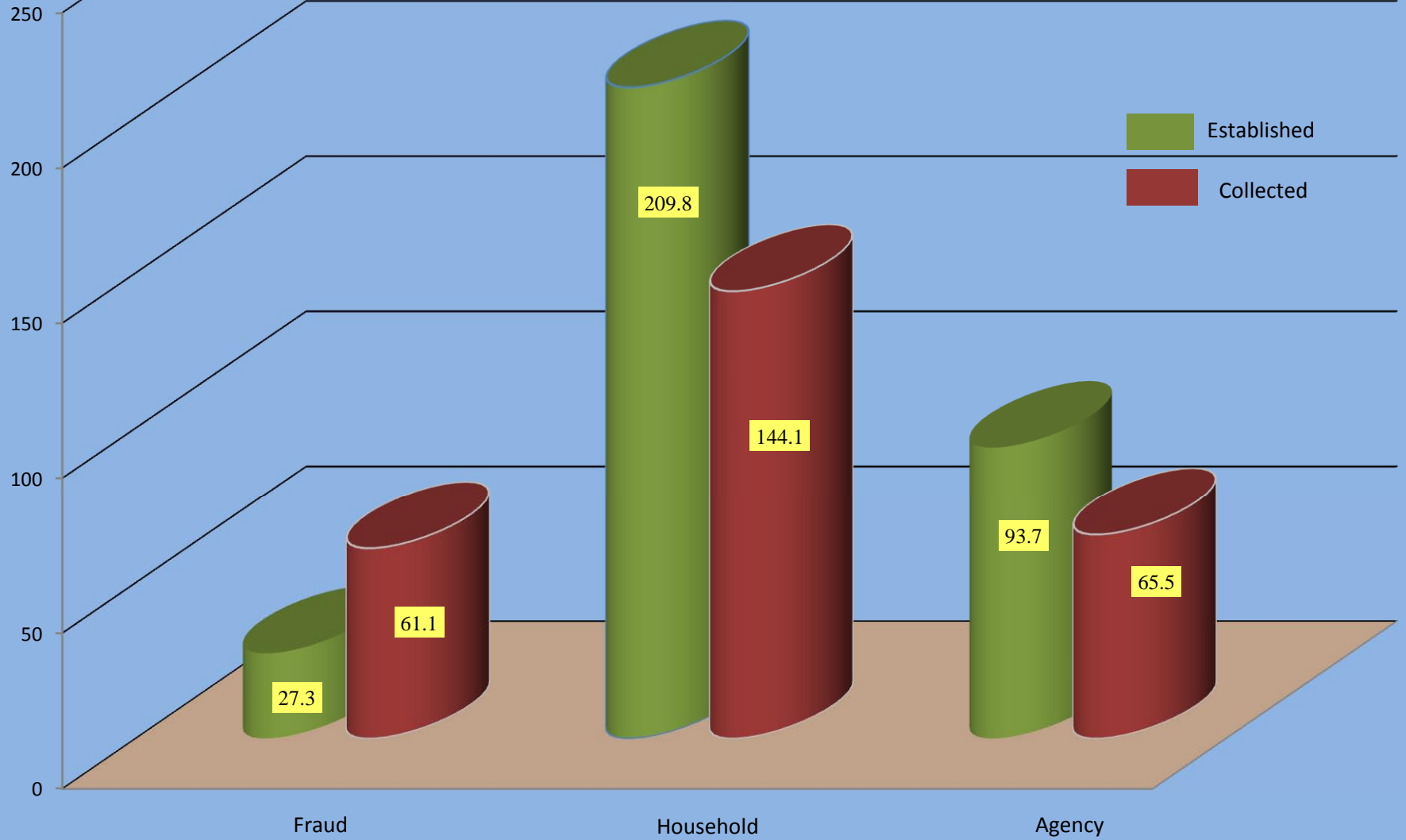


TABLE 24: Supplemental Nutrition Assistance Program Recipient Claims - Average Dollar Amount for New Claims Established - FY 2008

STATE	Avg Dollar Amount for New Fraud Claims Established	Avg Dollar Amount for Household Error Claims Established	Avg Dollar Amount for Agency Error Claims Established	Avg Dollar Amount for All New Claims Established
Connecticut	\$1,340	\$560	\$215	\$331
Maine	\$2,130	\$1,027	\$618	\$883
Massachusetts	\$959	\$546	\$669	\$645
New Hampshire	\$2,731	\$941	\$986	\$1,417
New York	\$1,538	\$823	\$580	\$843
Rhode Island	\$1,527	\$816	\$612	\$747
Vermont	\$1,746	\$544	\$722	\$726
Delaware	\$1,849	\$644	\$523	\$652
District of Columbia	\$3,867	\$1,471	\$568	\$1,404
Maryland	\$2,642	\$581	\$308	\$492
New Jersey	\$1,366	\$776	\$527	\$767
Pennsylvania	N/A	\$864	\$465	\$793
Virgin Islands	\$105	\$834	\$526	\$721
Virginia	\$1,382	\$970	\$413	\$837
West Virginia	\$2,060	\$685	\$399	\$660
Alabama	\$691	\$1,014	\$430	\$679
Florida	\$506	\$1,030	\$573	\$846
Georgia	\$2,431	\$861	\$360	\$995
Kentucky	\$2,627	\$1,657	\$524	\$1,264
Mississippi	\$893	\$952	\$564	\$887
North Carolina	\$1,789	\$1,127	\$698	\$1,012
South Carolina	\$1,478	\$1,316	\$689	\$1,178
Tennessee	\$3,307	\$1,762	\$957	\$1,795
Illinois	N/A	\$1,149	\$613	\$1,092
Indiana	\$2,451	\$1,320	\$711	\$1,342
Michigan	\$2,304	\$482	\$1,173	\$897
Minnesota	\$1,008	\$474	\$286	\$434
Ohio	\$1,331	\$582	\$461	\$594
Wisconsin	\$834	\$997	\$332	\$745
Arkansas	\$1,719	\$1,364	\$454	\$1,237
Louisiana	\$2,037	\$869	\$668	\$897
New Mexico	\$1,915	\$373	\$153	\$292
Oklahoma	\$2,184	\$1,464	\$541	\$1,308
Texas	\$948	\$942	\$678	\$906
Colorado	\$2,205	\$570	\$244	\$312
Iowa	\$659	\$948	\$276	\$627
Kansas	\$1,640	\$715	\$147	\$378
Missouri	\$1,451	\$1,157	\$484	\$972
Montana	\$1,457	\$828	\$215	\$453
Nebraska	N/A	\$531	\$267	\$390
North Dakota	\$1,057	\$503	\$178	\$299
South Dakota	\$1,160	\$286	\$192	\$300
Utah	\$1,405	\$1,169	\$553	\$892
Wyoming	N/A	\$464	\$208	\$381
Alaska	\$1,891	\$593	\$383	\$675
Arizona	\$2,525	\$818	\$519	\$709
California	\$2,123	\$422	\$211	\$282
Guam	N/A	\$1,142	\$896	\$1,047
Hawaii	\$1,878	\$675	\$260	\$539
Idaho	\$1,478	\$474	\$252	\$824
Nevada	\$1,168	\$786	\$312	\$716
Oregon	\$2,304	\$944	\$631	\$1,006
Washington	\$4,009	\$641	\$302	\$524
US	\$1,704	\$718	\$268	\$503

TABLE 25: Supplemental Nutrition Assistance Program Claims Collected - FY 2008

STATE	Fraud Claims Collected	Household Error Collected	Agency Error Collected	Total Claims Collected
Connecticut	\$194,787	\$643,782	\$413,112	\$1,251,681
Maine	\$203,738	\$826,235	\$390,275	\$1,420,248
Massachusetts	\$441,715	\$993,177	\$109,526	\$1,544,417
New Hampshire	\$157,246	\$181,832	\$60,104	\$399,183
New York	\$1,703,667	\$3,335,245	\$1,427,969	\$6,466,881
Rhode Island	\$91,293	\$474,891	\$133,949	\$700,133
Vermont	\$135,889	\$204,936	\$38,466	\$379,291
Delaware	\$45,680	\$663,636	\$68,048	\$777,364
District of Columbia	\$87,557	\$598,099	\$25,779	\$711,435
Maryland	\$140,209	\$963,544	\$454,220	\$1,557,973
New Jersey	\$2,160,159	\$5,843,830	\$620,298	\$8,624,286
Pennsylvania	\$2,089,539	\$7,314,072	\$1,286,604	\$10,690,214
Virgin Islands	\$37,556	\$114,407	\$41,054	\$193,017
Virginia	\$1,256,701	\$1,079,257	\$510,114	\$2,846,073
West Virginia	\$799,895	\$1,178,535	\$638,260	\$2,616,690
Alabama	\$1,063,466	\$1,181,772	\$1,017,295	\$3,262,532
Florida	\$1,983,752	\$7,297,400	\$3,140,642	\$12,421,794
Georgia	\$5,181,912	\$802,108	\$1,536,888	\$7,520,908
Kentucky	\$805,013	\$1,587,511	\$533,025	\$2,925,548
Mississippi	\$3,768,679	\$972,489	\$393,663	\$5,134,830
North Carolina	\$2,831,191	\$2,742,750	\$1,417,253	\$6,991,193
South Carolina	\$1,522,258	\$5,334,211	\$1,133,664	\$7,990,133
Tennessee	\$4,671,427	\$3,808,657	\$648,654	\$9,128,738
Illinois	\$1,536,639	\$18,469,576	\$1,736,906	\$21,743,121
Indiana	\$811,052	\$1,657,192	\$324,105	\$2,792,350
Michigan	\$2,897,405	\$1,059,546	\$698,309	\$4,655,260
Minnesota	\$1,238,560	\$3,597,484	\$1,069,934	\$5,905,978
Ohio	\$2,110,049	\$4,421,308	\$1,703,749	\$8,235,106
Wisconsin	\$308,455	\$1,667,902	\$541,456	\$2,517,814
Arkansas	\$819,182	\$203,121	\$174,275	\$1,196,578
Louisiana	\$995,320	\$966,305	\$422,488	\$2,384,113
New Mexico	\$180,548	\$827,581	\$383,273	\$1,391,401
Oklahoma	\$669,844	\$493,504	\$315,311	\$1,478,658
Texas	\$7,570,901	\$13,346,912	\$2,582,236	\$23,500,049
Colorado	\$806,925	\$1,783,990	\$4,096,965	\$6,687,880
Iowa	\$208,527	\$687,666	\$147,028	\$1,043,221
Kansas	\$787,782	\$527,501	\$447,989	\$1,763,273
Missouri	\$1,074,125	\$1,369,393	\$470,979	\$2,914,497
Montana	\$330,368	\$237,716	\$397,721	\$965,804
Nebraska	\$106,130	\$587,536	\$408,662	\$1,102,328
North Dakota	\$45,170	\$190,288	\$124,988	\$360,446
South Dakota	\$174,272	\$348,474	\$69,333	\$592,079
Utah	\$451,361	\$399,635	\$356,516	\$1,207,512
Wyoming	\$35,727	\$43,919	\$16,767	\$96,413
Alaska	\$266,212	\$99,252	\$85,386	\$450,849
Arizona	\$142,758	\$1,466,995	\$660,050	\$2,269,803
California	\$3,085,279	\$32,919,164	\$30,054,071	\$66,058,514
Guam	\$87,884	\$35,824	\$27,349	\$151,057
Hawaii	\$717,673	\$990,912	\$424,849	\$2,133,435
Idaho	\$309,856	\$136,207	\$105,885	\$551,948
Nevada	\$335,552	\$299,160	\$98,468	\$733,180
Oregon	\$1,321,788	\$4,736,166	\$803,458	\$6,861,411
Washington	\$242,518	\$2,405,338	\$736,802	\$3,384,657
US	\$61,041,191	\$144,117,939	\$65,524,168	\$270,683,298

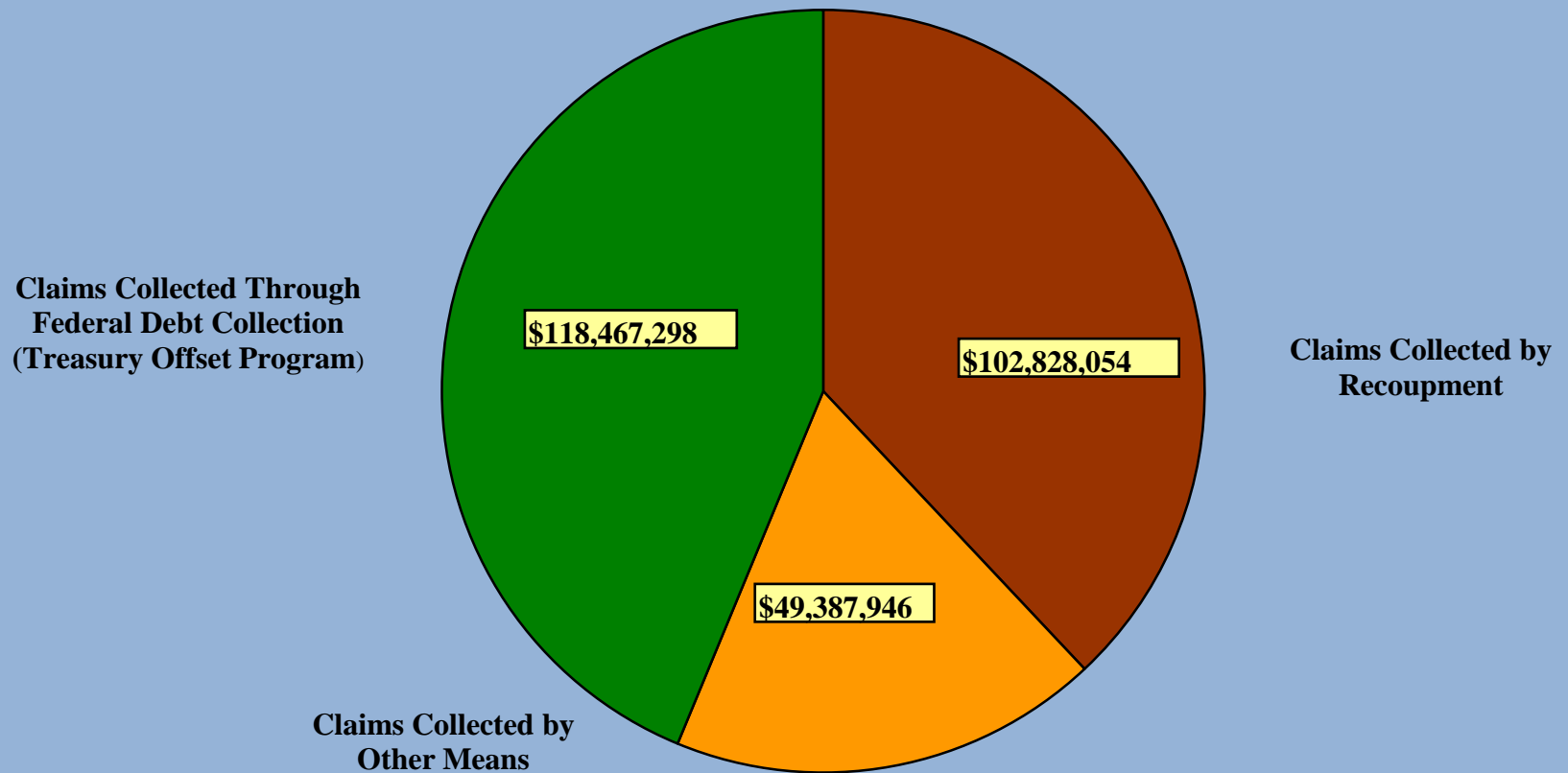
TABLE 26: Supplemental Nutrition Assistance Program Recipient Claims Recouped - FY 2008

STATE	Fraud Claims Recouped	Household Error Recouped	Agency Error Recouped	Total Claims Recouped
Connecticut	\$76,779	\$273,377	\$234,688	\$584,844
Maine	\$95,923	\$389,512	\$218,031	\$703,466
Massachusetts	\$160,062	\$472,824	\$52,862	\$685,748
New Hampshire	\$38,517	\$58,983	\$29,849	\$127,350
New York	\$555,679	\$1,639,381	\$900,281	\$3,095,341
Rhode Island	\$22,675	\$170,698	\$66,437	\$259,810
Vermont	\$65,201	\$116,405	\$19,009	\$200,615
Delaware	\$17,892	\$198,943	\$22,510	\$239,345
District of Columbia	\$3,343	\$273,161	\$17,086	\$293,590
Maryland	\$40,904	\$481,750	\$260,307	\$782,961
New Jersey	\$503,079	\$1,620,453	\$167,991	\$2,291,523
Pennsylvania	\$41,284	\$2,931,025	\$585,275	\$3,557,584
Virgin Islands	\$19,502	\$57,176	\$23,504	\$100,182
Virginia	\$295,789	\$350,164	\$255,609	\$901,562
West Virginia	\$211,036	\$479,562	\$291,591	\$982,189
Alabama	\$197,501	\$465,034	\$539,210	\$1,201,745
Florida	\$691,970	\$2,230,302	\$1,228,223	\$4,150,494
Georgia	\$1,785,424	\$316,879	\$832,005	\$2,934,308
Kentucky	\$197,209	\$501,513	\$266,389	\$965,111
Mississippi	\$1,441,864	\$386,020	\$177,353	\$2,005,237
North Carolina	\$652,800	\$943,012	\$575,994	\$2,171,806
South Carolina	\$614,166	\$1,957,046	\$450,382	\$3,021,594
Tennessee	\$1,561,341	\$1,565,884	\$275,783	\$3,403,008
Illinois	\$341,919	\$7,200,466	\$800,938	\$8,343,324
Indiana	\$317,850	\$597,249	\$108,540	\$1,023,639
Michigan	\$1,783,172	\$810,598	\$524,895	\$3,118,665
Minnesota	\$310,403	\$1,279,737	\$490,224	\$2,080,364
Ohio	\$858,683	\$2,533,339	\$974,401	\$4,366,423
Wisconsin	\$77,410	\$592,973	\$277,634	\$948,017
Arkansas	\$166,772	\$38,326	\$57,443	\$262,540
Louisiana	\$261,124	\$286,157	\$160,791	\$708,072
New Mexico	\$58,269	\$446,819	\$225,972	\$731,060
Oklahoma	\$164,279	\$141,351	\$120,750	\$426,380
Texas	\$1,316,018	\$2,512,941	\$696,344	\$4,525,304
Colorado	\$115,197	\$564,128	\$1,696,484	\$2,375,808
Iowa	\$69,667	\$213,029	\$76,064	\$358,760
Kansas	\$193,358	\$223,822	\$245,358	\$662,538
Missouri	\$400,183	\$684,939	\$231,674	\$1,316,796
Montana	\$92,587	\$108,246	\$209,080	\$409,913
Nebraska	\$34,134	\$224,559	\$194,206	\$452,898
North Dakota	\$19,069	\$83,365	\$67,831	\$170,265
South Dakota	\$58,551	\$218,999	\$40,895	\$318,445
Utah	\$63,390	\$103,152	\$117,081	\$283,623
Wyoming	\$3,273	\$13,892	\$5,906	\$23,071
Alaska	\$38,632	\$33,642	\$63,872	\$136,146
Arizona	\$37,190	\$554,577	\$290,472	\$882,239
California	\$1,098,560	\$12,544,174	\$16,009,451	\$29,652,185
Guam	\$59,063	\$24,168	\$17,578	\$100,809
Hawaii	\$250,450	\$422,226	\$222,077	\$894,753
Idaho	\$67,001	\$31,013	\$36,314	\$134,328
Nevada	\$80,559	\$62,450	\$37,472	\$180,481
Oregon	\$330,225	\$1,190,893	\$267,412	\$1,788,530
Washington	\$46,498	\$1,028,296	\$418,471	\$1,493,265
US	\$18,003,426	\$52,648,631	\$32,175,996	\$102,828,054

TABLE 27: Supplemental Nutrition Assistance Program Recipient Claims Collected - FY 2008

STATE	Total Claims Recouped	Other State Means of Collection	Federal Debt Collection	Total Claim Collected
Connecticut	\$584,844	\$120,158	\$546,680	\$1,251,681
Maine	\$703,466	\$80,743	\$636,039	\$1,420,248
Massachusetts	\$685,748	\$391,163	\$467,506	\$1,544,417
New Hampshire	\$127,350	\$90,709	\$181,124	\$399,183
New York	\$3,095,341	\$620,532	\$2,751,008	\$6,466,881
Rhode Island	\$259,810	\$30,211	\$410,112	\$700,133
Vermont	\$200,615	\$35,344	\$143,332	\$379,291
Delaware	\$239,345	\$130,489	\$407,530	\$777,364
District of Columbia	\$293,590	\$99,879	\$317,966	\$711,435
Maryland	\$782,961	\$263,378	\$511,633	\$1,557,973
New Jersey	\$2,291,523	\$1,230,473	\$5,102,290	\$8,624,286
Pennsylvania	\$3,557,584	\$1,552,877	\$5,579,753	\$10,690,214
Virgin Islands	\$100,182	\$58,154	\$34,680	\$193,017
Virginia	\$901,562	\$875,673	\$1,068,838	\$2,846,073
West Virginia	\$982,189	\$406,920	\$1,227,580	\$2,616,690
Alabama	\$1,201,745	\$308,184	\$1,752,604	\$3,262,532
Florida	\$4,150,494	\$1,585,417	\$6,685,883	\$12,421,794
Georgia	\$2,934,308	\$1,320,476	\$3,266,125	\$7,520,908
Kentucky	\$965,111	\$779,633	\$1,180,804	\$2,925,548
Mississippi	\$2,005,237	\$282,813	\$2,846,780	\$5,134,830
North Carolina	\$2,171,806	\$692,116	\$4,127,271	\$6,991,193
South Carolina	\$3,021,594	\$419,611	\$4,548,928	\$7,990,133
Tennessee	\$3,403,008	\$1,202,625	\$4,523,105	\$9,128,738
Illinois	\$8,343,324	\$1,374,103	\$12,025,695	\$21,743,121
Indiana	\$1,023,639	\$147,031	\$1,621,680	\$2,792,350
Michigan	\$3,118,665	\$1,047,043	\$489,552	\$4,655,260
Minnesota	\$2,080,364	\$1,106,907	\$2,718,707	\$5,905,978
Ohio	\$4,366,423	\$1,300,982	\$2,567,701	\$8,235,106
Wisconsin	\$948,017	\$405,426	\$1,164,371	\$2,517,814
Arkansas	\$262,540	\$220,703	\$713,336	\$1,196,578
Louisiana	\$708,072	\$492,412	\$1,183,630	\$2,384,113
New Mexico	\$731,060	\$135,252	\$525,089	\$1,391,401
Oklahoma	\$426,380	\$277,571	\$774,708	\$1,478,658
Texas	\$4,525,304	\$5,768,194	\$13,206,551	\$23,500,049
Colorado	\$2,375,808	\$1,888,670	\$2,423,401	\$6,687,880
Iowa	\$358,760	\$273,634	\$410,827	\$1,043,221
Kansas	\$662,538	\$101,307	\$999,427	\$1,763,273
Missouri	\$1,316,796	\$223,761	\$1,373,939	\$2,914,497
Montana	\$409,913	\$86,724	\$469,167	\$965,804
Nebraska	\$452,898	\$141,428	\$508,002	\$1,102,328
North Dakota	\$170,265	\$60,973	\$129,208	\$360,446
South Dakota	\$318,445	\$72,188	\$201,446	\$592,079
Utah	\$283,623	\$231,070	\$692,819	\$1,207,512
Wyoming	\$23,071	\$32,890	\$40,452	\$96,413
Alaska	\$136,146	\$227,336	\$87,367	\$450,849
Arizona	\$882,239	\$295,899	\$1,091,665	\$2,269,803
California	\$29,652,185	\$17,173,423	\$19,232,906	\$66,058,514
Guam	\$100,809	\$47,507	\$2,740	\$151,057
Hawaii	\$894,753	\$334,431	\$904,251	\$2,133,435
Idaho	\$134,328	\$230,119	\$187,502	\$551,948
Nevada	\$180,481	\$105,554	\$447,146	\$733,180
Oregon	\$1,788,530	\$2,605,614	\$2,467,267	\$6,861,411
Washington	\$1,493,265	\$402,216	\$1,489,176	\$3,384,657
US	\$102,828,054	\$49,387,946	\$118,467,298	\$270,683,298

RECIPIENT CLAIMS COLLECTED BY COLLECTION METHODOLOGY FY 2008



RANKINGS OF PARTICIPATION AND ISSUANCE



TABLE 28: Supplemental Nutrition Assistance Program Participation and Issuance - Ranked by Persons - FY 2008

Rank	STATE	Persons Participating (Monthly)	Households Participating (Monthly)	Issuance
1	Texas	2,532,047	994,786	\$3,068,232,722
2	California	2,220,127	914,161	\$2,995,179,522
3	New York	1,952,991	1,036,676	\$2,572,842,848
4	Florida	1,454,928	745,847	\$1,778,641,937
5	Illinois	1,299,443	595,832	\$1,718,280,001
6	Michigan	1,256,373	590,930	\$1,506,032,208
7	Pennsylvania	1,187,822	558,939	\$1,386,964,117
8	Ohio	1,150,928	526,800	\$1,494,661,229
9	Georgia	1,021,155	417,427	\$1,276,750,098
10	North Carolina	946,978	419,127	\$1,104,399,962
11	Tennessee	911,253	410,458	\$1,114,791,337
12	Missouri	888,564	314,012	\$810,471,619
13	Louisiana	790,733	324,887	\$1,025,182,241
14	Kentucky	633,194	283,752	\$742,037,605
15	Arizona	627,660	258,517	\$772,440,411
16	Indiana	623,415	267,802	\$772,883,186
17	South Carolina	589,763	255,702	\$706,792,219
18	Washington	581,001	292,515	\$680,799,184
19	Alabama	571,591	231,740	\$663,901,057
20	Virginia	545,079	245,592	\$610,021,737
21	Massachusetts	505,782	266,430	\$586,587,498
22	Oregon	469,315	243,257	\$542,197,277
23	Mississippi	447,181	188,498	\$496,847,694
24	New Jersey	437,860	210,867	\$532,944,902
25	Wisconsin	422,781	180,792	\$430,028,455
26	Oklahoma	419,038	176,483	\$491,362,648
27	Arkansas	377,883	157,871	\$431,547,807
28	Maryland	359,985	167,174	\$432,043,737
29	Minnesota	293,918	140,423	\$329,569,307
30	West Virginia	276,800	124,183	\$304,122,744
31	Iowa	258,173	117,632	\$305,655,259
32	Colorado	252,933	109,405	\$325,104,191
33	New Mexico	239,959	95,769	\$269,188,961
34	Connecticut	225,383	120,573	\$284,829,257
35	Kansas	187,569	85,784	\$211,265,341
36	Maine	173,039	86,459	\$196,264,502
37	Nevada	144,494	67,380	\$169,714,444
38	Utah	134,180	53,715	\$150,960,595
39	Nebraska	120,809	52,082	\$140,752,738
40	Idaho	100,198	40,835	\$116,567,714
41	Hawaii	96,551	48,824	\$184,612,461
42	District of Columbia	89,442	47,721	\$112,324,800
43	Rhode Island	84,868	41,548	\$107,719,391
44	Montana	80,407	35,494	\$94,225,210
45	Delaware	74,429	32,512	\$86,180,751
46	New Hampshire	63,583	31,244	\$71,404,026
47	South Dakota	62,945	26,189	\$78,001,007
48	Alaska	56,977	21,976	\$94,262,437
49	Vermont	55,847	27,642	\$62,169,303
50	North Dakota	48,412	21,825	\$59,266,579
51	Guam	27,874	8,295	\$60,125,091
52	Wyoming	22,608	9,564	\$26,389,959
53	Virgin Islands	13,613	5,036	\$22,855,912
	US	28,409,880	12,728,981	\$34,608,397,238

TABLE 29: Supplemental Nutrition Assistance Program Participation and Issuance - Ranked by Households - FY 2008

Rank	STATE	Persons Participating (Monthly)	Households Participating (Monthly)	Issuance
1	New York	1,952,991	1,036,676	\$2,572,842,848
2	Texas	2,532,047	994,786	\$3,068,232,722
3	California	2,220,127	914,161	\$2,995,179,522
4	Florida	1,454,928	745,847	\$1,778,641,937
5	Illinois	1,299,443	595,832	\$1,718,280,001
6	Michigan	1,256,373	590,930	\$1,506,032,208
7	Pennsylvania	1,187,822	558,939	\$1,386,964,117
8	Ohio	1,150,928	526,800	\$1,494,661,229
9	North Carolina	946,978	419,127	\$1,104,399,962
10	Georgia	1,021,155	417,427	\$1,276,750,098
11	Tennessee	911,253	410,458	\$1,114,791,337
12	Louisiana	790,733	324,887	\$1,025,182,241
13	Missouri	888,564	314,012	\$810,471,619
14	Washington	581,001	292,515	\$680,799,184
15	Kentucky	633,194	283,752	\$742,037,605
16	Indiana	623,415	267,802	\$772,883,186
17	Massachusetts	505,782	266,430	\$586,587,498
18	Arizona	627,660	258,517	\$772,440,411
19	South Carolina	589,763	255,702	\$706,792,219
20	Virginia	545,079	245,592	\$610,021,737
21	Oregon	469,315	243,257	\$542,197,277
22	Alabama	571,591	231,740	\$663,901,057
23	New Jersey	437,860	210,867	\$532,944,902
24	Mississippi	447,181	188,498	\$496,847,694
25	Wisconsin	422,781	180,792	\$430,028,455
26	Oklahoma	419,038	176,483	\$491,362,648
27	Maryland	359,985	167,174	\$432,043,737
28	Arkansas	377,883	157,871	\$431,547,807
29	Minnesota	293,918	140,423	\$329,569,307
30	West Virginia	276,800	124,183	\$304,122,744
31	Connecticut	225,383	120,573	\$284,829,257
32	Iowa	258,173	117,632	\$305,655,259
33	Colorado	252,933	109,405	\$325,104,191
34	New Mexico	239,959	95,769	\$269,188,961
35	Maine	173,039	86,459	\$196,264,502
36	Kansas	187,569	85,784	\$211,265,341
37	Nevada	144,494	67,380	\$169,714,444
38	Utah	134,180	53,715	\$150,960,595
39	Nebraska	120,809	52,082	\$140,752,738
40	Hawaii	96,551	48,824	\$184,612,461
41	District of Columbia	89,442	47,721	\$112,324,800
42	Rhode Island	84,868	41,548	\$107,719,391
43	Idaho	100,198	40,835	\$116,567,714
44	Montana	80,407	35,494	\$94,225,210
45	Delaware	74,429	32,512	\$86,180,751
46	New Hampshire	63,583	31,244	\$71,404,026
47	Vermont	55,847	27,642	\$62,169,303
48	South Dakota	62,945	26,189	\$78,001,007
49	Alaska	56,977	21,976	\$94,262,437
50	North Dakota	48,412	21,825	\$59,266,579
51	Wyoming	22,608	9,564	\$26,389,959
52	Guam	27,874	8,295	\$60,125,091
53	Virgin Islands	13,613	5,036	\$22,855,912
	US	28,409,880	12,728,981	\$34,608,397,238

TABLE 30: Supplemental Nutrition Assistance Program Participation and Issuance - Ranked by Issuance - FY 2008

Rank	STATE	Persons Participating (Monthly)	Households Participating (Monthly)	Issuance
1	Texas	2,532,047	994,786	\$3,068,232,722
2	California	2,220,127	914,161	\$2,995,179,522
3	New York	1,952,991	1,036,676	\$2,572,842,848
4	Florida	1,454,928	745,847	\$1,778,641,937
5	Illinois	1,299,443	595,832	\$1,718,280,001
6	Michigan	1,256,373	590,930	\$1,506,032,208
7	Ohio	1,150,928	526,800	\$1,494,661,229
8	Pennsylvania	1,187,822	558,939	\$1,386,964,117
9	Georgia	1,021,155	417,427	\$1,276,750,098
10	Tennessee	911,253	410,458	\$1,114,791,337
11	North Carolina	946,978	419,127	\$1,104,399,962
12	Louisiana	790,733	324,887	\$1,025,182,241
13	Missouri	888,564	314,012	\$810,471,619
14	Indiana	623,415	267,802	\$772,883,186
15	Arizona	627,660	258,517	\$772,440,411
16	Kentucky	633,194	283,752	\$742,037,605
17	South Carolina	589,763	255,702	\$706,792,219
18	Washington	581,001	292,515	\$680,799,184
19	Alabama	571,591	231,740	\$663,901,057
20	Virginia	545,079	245,592	\$610,021,737
21	Massachusetts	505,782	266,430	\$586,587,498
22	Oregon	469,315	243,257	\$542,197,277
23	New Jersey	437,860	210,867	\$532,944,902
24	Mississippi	447,181	188,498	\$496,847,694
25	Oklahoma	419,038	176,483	\$491,362,648
26	Maryland	359,985	167,174	\$432,043,737
27	Arkansas	377,883	157,871	\$431,547,807
28	Wisconsin	422,781	180,792	\$430,028,455
29	Minnesota	293,918	140,423	\$329,569,307
30	Colorado	252,933	109,405	\$325,104,191
31	Iowa	258,173	117,632	\$305,655,259
32	West Virginia	276,800	124,183	\$304,122,744
33	Connecticut	225,383	120,573	\$284,829,257
34	New Mexico	239,959	95,769	\$269,188,961
35	Kansas	187,569	85,784	\$211,265,341
36	Maine	173,039	86,459	\$196,264,502
37	Hawaii	96,551	48,824	\$184,612,461
38	Nevada	144,494	67,380	\$169,714,444
39	Utah	134,180	53,715	\$150,960,595
40	Nebraska	120,809	52,082	\$140,752,738
41	Idaho	100,198	40,835	\$116,567,714
42	District of Columbia	89,442	47,721	\$112,324,800
43	Rhode Island	84,868	41,548	\$107,719,391
44	Alaska	56,977	21,976	\$94,262,437
45	Montana	80,407	35,494	\$94,225,210
46	Delaware	74,429	32,512	\$86,180,751
47	South Dakota	62,945	26,189	\$78,001,007
48	New Hampshire	63,583	31,244	\$71,404,026
49	Vermont	55,847	27,642	\$62,169,303
50	Guam	27,874	8,295	\$60,125,091
51	North Dakota	48,412	21,825	\$59,266,579
52	Wyoming	22,608	9,564	\$26,389,959
53	Virgin Islands	13,613	5,036	\$22,855,912
	US	28,409,880	12,728,981	\$34,608,397,238

TABLE 31: Supplemental Nutrition Assistance Program Average Monthly Benefit - Ranked by Benefit per Person - FY 2008

Rank	STATE	Average Monthly Benefit Per Person	Average Monthly Benefit Per Household
1	Guam	\$179.76	\$604.01
2	Hawaii	\$159.34	\$315.10
3	Virgin Islands	\$139.91	\$378.22
4	Alaska	\$137.87	\$357.45
5	California	\$112.43	\$273.04
6	Illinois	\$110.19	\$240.32
7	New York	\$109.78	\$206.82
8	Ohio	\$108.22	\$236.44
9	Louisiana	\$108.04	\$262.96
10	Colorado	\$107.11	\$247.63
11	Rhode Island	\$105.77	\$216.06
12	Connecticut	\$105.31	\$196.86
13	District of Columbia	\$104.65	\$196.15
14	Georgia	\$104.19	\$254.89
15	Indiana	\$103.31	\$240.50
16	South Dakota	\$103.27	\$248.20
17	Arizona	\$102.56	\$249.00
18	North Dakota	\$102.02	\$226.30
19	Tennessee	\$101.95	\$226.33
20	Florida	\$101.87	\$198.73
21	New Jersey	\$101.43	\$210.62
22	Texas	\$100.98	\$257.03
23	Maryland	\$100.01	\$215.37
24	Michigan	\$99.89	\$212.38
25	South Carolina	\$99.87	\$230.34
26	Iowa	\$98.66	\$216.53
27	Nevada	\$97.88	\$209.90
28	Oklahoma	\$97.72	\$232.02
29	Kentucky	\$97.66	\$217.92
30	Montana	\$97.65	\$221.22
31	Washington	\$97.65	\$193.95
32	Pennsylvania	\$97.30	\$206.79
33	Wyoming	\$97.27	\$229.95
34	North Carolina	\$97.19	\$219.58
35	Nebraska	\$97.09	\$225.21
36	Idaho	\$96.95	\$237.89
37	Alabama	\$96.79	\$238.74
38	Massachusetts	\$96.65	\$183.47
39	Delaware	\$96.49	\$220.89
40	Oregon	\$96.27	\$185.74
41	Arkansas	\$95.17	\$227.80
42	Maine	\$94.52	\$189.17
43	Kansas	\$93.86	\$205.23
44	Utah	\$93.75	\$234.20
45	New Hampshire	\$93.58	\$190.45
46	New Mexico	\$93.48	\$234.23
47	Minnesota	\$93.44	\$195.58
48	Virginia	\$93.26	\$206.99
49	Vermont	\$92.77	\$187.42
50	Mississippi	\$92.59	\$219.65
51	West Virginia	\$91.56	\$204.08
52	Wisconsin	\$84.76	\$198.22
53	Missouri	\$76.01	\$215.09
	US	\$101.52	\$226.57

TABLE 32: Supplemental Nutrition Assistance Program Average Monthly Benefit - Ranked by Benefit per Household - FY 2008

Rank	STATE	Average Monthly Benefit Per Person	Average Monthly Benefit Per Household
1	Guam	\$179.76	\$604.01
2	Virgin Islands	\$139.91	\$378.22
3	Alaska	\$137.87	\$357.45
4	Hawaii	\$159.34	\$315.10
5	California	\$112.43	\$273.04
6	Louisiana	\$108.04	\$262.96
7	Texas	\$100.98	\$257.03
8	Georgia	\$104.19	\$254.89
9	Arizona	\$102.56	\$249.00
10	South Dakota	\$103.27	\$248.20
11	Colorado	\$107.11	\$247.63
12	Indiana	\$103.31	\$240.50
13	Illinois	\$110.19	\$240.32
14	Alabama	\$96.79	\$238.74
15	Idaho	\$96.95	\$237.89
16	Ohio	\$108.22	\$236.44
17	New Mexico	\$93.48	\$234.23
18	Utah	\$93.75	\$234.20
19	Oklahoma	\$97.72	\$232.02
20	South Carolina	\$99.87	\$230.34
21	Wyoming	\$97.27	\$229.95
22	Arkansas	\$95.17	\$227.80
23	Tennessee	\$101.95	\$226.33
24	North Dakota	\$102.02	\$226.30
25	Nebraska	\$97.09	\$225.21
26	Montana	\$97.65	\$221.22
27	Delaware	\$96.49	\$220.89
28	Mississippi	\$92.59	\$219.65
29	North Carolina	\$97.19	\$219.58
30	Kentucky	\$97.66	\$217.92
31	Iowa	\$98.66	\$216.53
32	Rhode Island	\$105.77	\$216.06
33	Maryland	\$100.01	\$215.37
34	Missouri	\$76.01	\$215.09
35	Michigan	\$99.89	\$212.38
36	New Jersey	\$101.43	\$210.62
37	Nevada	\$97.88	\$209.90
38	Virginia	\$93.26	\$206.99
39	New York	\$109.78	\$206.82
40	Pennsylvania	\$97.30	\$206.79
41	Kansas	\$93.86	\$205.23
42	West Virginia	\$91.56	\$204.08
43	Florida	\$101.87	\$198.73
44	Wisconsin	\$84.76	\$198.22
45	Connecticut	\$105.31	\$196.86
46	District of Columbia	\$104.65	\$196.15
47	Minnesota	\$93.44	\$195.58
48	Washington	\$97.65	\$193.95
49	New Hampshire	\$93.58	\$190.45
50	Maine	\$94.52	\$189.17
51	Vermont	\$92.77	\$187.42
52	Oregon	\$96.27	\$185.74
53	Massachusetts	\$96.65	\$183.47
	US	\$101.52	\$226.57

COMPARISONS TO PRIOR YEAR



TABLE 33: Supplemental Nutrition Assistance Program Participation - Persons - FY 2006 - FY 2008

STATE	Persons Participating (Monthly) FY 2006	Persons Participating (Monthly) FY 2007	Persons Participating (Monthly) FY 2008	Percent Change FY 2006 - FY 2008
Connecticut	210,288	212,562	225,383	6.03%
Maine	160,294	162,602	173,039	6.42%
Massachusetts	431,518	456,192	505,782	10.87%
New Hampshire	56,338	59,101	63,583	7.58%
New York	1,785,914	1,801,984	1,952,991	8.38%
Rhode Island	73,195	76,315	84,868	11.21%
Vermont	47,677	52,612	55,847	6.15%
Delaware	65,698	67,185	74,429	10.78%
District of Columbia	89,168	86,519	89,442	3.38%
Maryland	305,395	317,825	359,985	13.27%
New Jersey	405,667	414,503	437,860	5.64%
Pennsylvania	1,092,298	1,135,146	1,187,822	4.64%
Virgin Islands	13,375	13,281	13,613	2.51%
Virginia	506,656	515,032	545,079	5.83%
West Virginia	267,630	269,343	276,800	2.77%
Alabama	546,684	545,955	571,591	4.70%
Florida	1,417,749	1,232,803	1,454,928	18.02%
Georgia	946,812	950,038	1,021,155	7.49%
Kentucky	589,102	602,022	633,194	5.18%
Mississippi	447,710	426,116	447,181	4.94%
North Carolina	854,407	882,946	946,978	7.25%
South Carolina	534,294	545,293	589,763	8.16%
Tennessee	870,416	864,870	911,253	5.36%
Illinois	1,225,093	1,246,400	1,299,443	4.26%
Indiana	574,696	587,156	623,415	6.18%
Michigan	1,133,793	1,204,409	1,256,373	4.31%
Minnesota	263,986	276,414	293,918	6.33%
Ohio	1,063,920	1,076,764	1,150,928	6.89%
Wisconsin	367,918	382,770	422,781	10.45%
Arkansas	384,889	379,768	377,883	-0.50%
Louisiana	829,882	650,357	790,733	21.58%
New Mexico	244,672	233,918	239,959	2.58%
Oklahoma	435,519	421,316	419,038	-0.54%
Texas	2,622,548	2,422,198	2,532,047	4.54%
Colorado	251,385	250,704	252,933	0.89%
Iowa	225,717	238,349	258,173	8.32%
Kansas	183,071	182,407	187,569	2.83%
Missouri	796,350	823,915	888,564	7.85%
Montana	81,567	79,969	80,407	0.55%
Nebraska	119,683	120,634	120,809	0.14%
North Dakota	42,576	45,122	48,412	7.29%
South Dakota	58,466	60,246	62,945	4.48%
Utah	131,753	123,475	134,180	8.67%
Wyoming	24,236	22,608	22,608	0.00%
Alaska	57,153	56,181	56,977	1.42%
Arizona	540,782	544,688	627,660	15.23%
California	1,999,656	2,048,185	2,220,127	8.39%
Guam	27,724	26,614	27,874	4.73%
Hawaii	87,942	89,629	96,551	7.72%
Idaho	91,106	87,068	100,198	15.08%
Nevada	117,920	122,224	144,494	18.22%
Oregon	434,239	438,498	469,315	7.03%
Washington	535,768	536,333	581,001	8.33%
US	26,672,294	26,468,563	28,409,880	7.33%

TABLE 34: Supplemental Nutrition Assistance Program Participation - Households - FY 2006 - FY 2008

	Households Participating (Monthly) FY 2006	Households Participating (Monthly) FY 2007	Households Participating (Monthly) FY 2008	Percent Change FY 2006 - FY 2008
STATE				
Connecticut	111,958	113,187	120,573	6.53%
Maine	81,557	81,767	86,459	5.74%
Massachusetts	227,263	239,802	266,430	11.10%
New Hampshire	27,377	28,852	31,244	8.29%
New York	935,068	951,633	1,036,676	8.94%
Rhode Island	34,241	36,645	41,548	13.38%
Vermont	23,696	26,046	27,642	6.13%
Delaware	28,211	29,116	32,512	11.66%
District of Columbia	45,469	45,129	47,721	5.74%
Maryland	140,394	147,191	167,174	13.58%
New Jersey	194,108	198,725	210,867	6.11%
Pennsylvania	496,774	530,243	558,939	5.41%
Virgin Islands	4,671	4,761	5,036	5.77%
Virginia	224,843	230,281	245,592	6.65%
West Virginia	118,282	120,135	124,183	3.37%
Alabama	220,345	220,917	231,740	4.90%
Florida	673,299	627,987	745,847	18.77%
Georgia	386,192	387,254	417,427	7.79%
Kentucky	257,605	266,673	283,752	6.40%
Mississippi	181,184	178,775	188,498	5.44%
North Carolina	376,577	391,019	419,127	7.19%
South Carolina	226,850	233,295	255,702	9.60%
Tennessee	387,090	387,441	410,458	5.94%
Illinois	556,293	569,073	595,832	4.70%
Indiana	249,498	253,840	267,802	5.50%
Michigan	515,030	555,744	590,930	6.33%
Minnesota	125,764	131,764	140,423	6.57%
Ohio	480,582	492,811	526,800	6.90%
Wisconsin	154,558	162,092	180,792	11.54%
Arkansas	159,354	158,087	157,871	-0.14%
Louisiana	333,400	266,075	324,887	22.10%
New Mexico	95,499	92,093	95,769	3.99%
Oklahoma	181,135	176,290	176,483	0.11%
Texas	1,017,313	947,235	994,786	5.02%
Colorado	107,246	106,899	109,405	2.34%
Iowa	100,753	108,166	117,632	8.75%
Kansas	81,625	82,881	85,784	3.50%
Missouri	301,019	301,338	314,012	4.21%
Montana	35,268	34,830	35,494	1.91%
Nebraska	51,285	51,845	52,082	0.46%
North Dakota	19,288	20,395	21,825	7.01%
South Dakota	23,781	24,754	26,189	5.80%
Utah	53,967	50,784	53,715	5.77%
Wyoming	10,134	9,499	9,564	0.69%
Alaska	21,172	21,318	21,976	3.09%
Arizona	220,293	222,304	258,517	16.29%
California	799,469	827,258	914,161	10.50%
Guam	8,220	7,916	8,295	4.79%
Hawaii	44,883	45,380	48,824	7.59%
Idaho	36,959	35,990	40,835	13.46%
Nevada	54,517	57,023	67,380	18.16%
Oregon	222,930	226,435	243,257	7.43%
Washington	270,202	272,605	292,515	7.30%
US	11,734,491	11,789,594	12,728,981	7.97%

TABLE 35: Supplemental Nutrition Assistance Program Participation - Issuance - FY 2006 - FY 2008

	Issuance FY 2006	Issuance FY 2007	Issuance FY 2008	Percent Change FY 2006 - FY 2008
STATE				
Connecticut	\$239,082,045	\$253,062,794	\$284,829,257	12.55%
Maine	\$169,291,080	\$170,581,745	\$196,264,502	15.06%
Massachusetts	\$421,536,216	\$471,901,175	\$586,587,498	24.30%
New Hampshire	\$57,878,223	\$62,477,686	\$71,404,026	14.29%
New York	\$2,239,980,092	\$2,324,294,916	\$2,572,842,848	10.69%
Rhode Island	\$80,928,576	\$89,354,659	\$107,719,391	20.55%
Vermont	\$50,092,041	\$55,659,902	\$62,169,303	11.69%
Delaware	\$70,175,479	\$74,729,045	\$86,180,751	15.32%
District of Columbia	\$104,153,208	\$103,950,879	\$112,324,800	8.06%
Maryland	\$336,097,166	\$357,244,132	\$432,043,737	20.94%
New Jersey	\$455,855,915	\$483,425,319	\$532,944,902	10.24%
Pennsylvania	\$1,182,249,827	\$1,258,604,269	\$1,386,964,117	10.20%
Virgin Islands	\$20,591,784	\$21,025,459	\$22,855,912	8.71%
Virginia	\$525,712,148	\$551,446,240	\$610,021,737	10.62%
West Virginia	\$266,402,597	\$274,884,537	\$304,122,744	10.64%
Alabama	\$593,698,537	\$601,413,135	\$663,901,057	10.39%
Florida	\$1,684,348,395	\$1,400,153,858	\$1,778,641,937	27.03%
Georgia	\$1,098,314,441	\$1,125,954,322	\$1,276,750,098	13.39%
Kentucky	\$645,357,318	\$674,261,809	\$742,037,605	10.05%
Mississippi	\$507,102,161	\$443,797,523	\$496,847,694	11.95%
North Carolina	\$920,976,885	\$972,290,890	\$1,104,399,962	13.59%
South Carolina	\$589,430,436	\$618,164,263	\$706,792,219	14.34%
Tennessee	\$976,012,959	\$1,003,609,007	\$1,114,791,337	11.08%
Illinois	\$1,503,197,008	\$1,565,198,255	\$1,718,280,001	9.78%
Indiana	\$648,113,405	\$677,097,583	\$772,883,186	14.15%
Michigan	\$1,238,787,643	\$1,367,629,622	\$1,506,032,208	10.12%
Minnesota	\$282,402,693	\$296,387,269	\$329,569,307	11.20%
Ohio	\$1,266,219,839	\$1,292,695,103	\$1,494,661,229	15.62%
Wisconsin	\$346,649,508	\$363,438,137	\$430,028,455	18.32%
Arkansas	\$414,384,306	\$412,445,881	\$431,547,807	4.63%
Louisiana	\$1,031,646,570	\$746,127,346	\$1,025,182,241	37.40%
New Mexico	\$253,364,982	\$248,844,870	\$269,188,961	8.18%
Oklahoma	\$467,306,464	\$458,907,034	\$491,362,648	7.07%
Texas	\$2,939,331,493	\$2,718,158,343	\$3,068,232,722	12.88%
Colorado	\$321,030,244	\$310,583,982	\$325,104,191	4.68%
Iowa	\$244,224,816	\$265,450,404	\$305,655,259	15.15%
Kansas	\$188,316,820	\$192,850,959	\$211,265,341	9.55%
Missouri	\$740,064,276	\$745,311,957	\$810,471,619	8.74%
Montana	\$89,953,948	\$89,698,694	\$94,225,210	5.05%
Nebraska	\$124,315,497	\$126,459,764	\$140,752,738	11.30%
North Dakota	\$46,220,226	\$51,891,080	\$59,266,579	14.21%
South Dakota	\$66,153,217	\$70,614,077	\$78,001,007	10.46%
Utah	\$140,415,915	\$133,204,438	\$150,960,595	13.33%
Wyoming	\$26,308,511	\$25,284,892	\$26,389,959	4.37%
Alaska	\$85,981,777	\$86,084,132	\$94,262,437	9.50%
Arizona	\$626,260,397	\$646,750,299	\$772,440,411	19.43%
California	\$2,376,672,482	\$2,569,814,590	\$2,995,179,522	16.55%
Guam	\$54,540,592	\$55,690,316	\$60,125,091	7.96%
Hawaii	\$147,845,128	\$156,542,027	\$184,612,461	17.93%
Idaho	\$100,166,643	\$95,992,768	\$116,567,714	21.43%
Nevada	\$124,331,511	\$133,739,897	\$169,714,444	26.90%
Oregon	\$463,280,260	\$477,442,080	\$542,197,277	13.56%
Washington	\$594,593,287	\$600,647,715	\$680,799,184	13.34%
US	\$30,187,346,987	\$30,373,271,078	\$34,608,397,238	13.94%

TABLE 36: Supplemental Nutrition Assistance Program Households on Electronic Benefit Transfer (EBT) - FY 2006 - 2008

STATE	EBT Hshlds (Monthly Ave) FY 2006	% on EBT FY 2006	EBT Hshlds (Monthly Ave) FY 2007	% on EBT FY 2007	EBT Hshlds (Monthly Ave) FY 2008	% on EBT FY 2008
Connecticut	111,958	100%	113,187	100%	120,573	100%
Maine	0	0%	81,767	100%	86,459	100%
Massachusetts	227,263	100%	239,802	100%	266,430	100%
New Hampshire	27,377	100%	28,852	100%	31,244	100%
New York	935,068	100%	951,633	100%	1,036,676	100%
Rhode Island	34,241	100%	36,645	100%	41,548	100%
Vermont	16,147	68%	18,136	70%	19,367	70%
Delaware	0	0%	29,116	100%	32,512	100%
District of Columbia	45,469	100%	45,129	100%	47,721	100%
Maryland	140,394	100%	147,191	100%	167,174	100%
New Jersey	194,108	100%	198,725	100%	210,867	100%
Pennsylvania	496,774	100%	530,243	100%	558,939	100%
Virgin Islands	0	0%	4,761	100%	5,036	100%
Virginia	224,843	100%	230,281	100%	245,592	100%
West Virginia	0	0%	120,135	100%	124,183	100%
Alabama	220,345	100%	220,917	100%	231,740	100%
Florida	673,299	100%	627,987	100%	745,847	100%
Georgia	386,192	100%	387,254	100%	417,427	100%
Kentucky	257,605	100%	266,673	100%	283,752	100%
Mississippi	181,184	100%	178,775	100%	188,498	100%
North Carolina	376,577	100%	391,019	100%	419,127	100%
South Carolina	226,850	100%	233,295	100%	255,702	100%
Tennessee	387,090	100%	387,441	100%	410,458	100%
Illinois	556,293	100%	569,073	100%	595,832	100%
Indiana	249,498	100%	253,840	100%	267,802	100%
Michigan	515,030	100%	555,744	100%	590,930	100%
Minnesota	110,585	88%	116,098	88%	124,322	89%
Ohio	455,896	95%	468,735	95%	504,707	96%
Wisconsin	154,558	100%	162,092	100%	180,792	100%
Arkansas	159,354	100%	158,087	100%	157,871	100%
Louisiana	333,400	100%	266,075	100%	324,887	100%
New Mexico	95,499	100%	92,093	100%	95,769	100%
Oklahoma	181,135	100%	176,290	100%	176,483	100%
Texas	1,017,313	100%	947,235	100%	994,786	100%
Colorado	107,246	100%	106,899	100%	109,405	100%
Iowa	100,753	100%	108,166	100%	117,632	100%
Kansas	81,625	100%	82,881	100%	85,784	100%
Missouri	301,019	100%	301,338	100%	314,012	100%
Montana	35,268	100%	34,830	100%	35,494	100%
Nebraska	51,285	100%	51,845	100%	52,082	100%
North Dakota	19,288	100%	20,395	100%	21,825	100%
South Dakota	23,781	100%	24,754	100%	26,189	100%
Utah	50,771	94%	47,817	94%	50,792	95%
Wyoming	10,134	100%	9,499	100%	9,564	100%
Alaska	21,172	100%	21,318	100%	21,976	100%
Arizona	220,291	100%	222,304	100%	258,517	100%
California	799,469	100%	827,258	100%	914,161	100%
Guam	8,220	100%	7,916	100%	8,295	100%
Hawaii	44,883	100%	45,380	100%	48,824	100%
Idaho	36,959	100%	35,990	100%	40,835	100%
Nevada	54,517	100%	57,023	100%	67,380	100%
Oregon	206,031	92%	209,048	92%	225,034	93%
Washington	270,202	100%	272,605	100%	292,515	100%
US	11,666,980	99%	11,721,589	99%	12,661,365	99%

TABLE 37: Supplemental Nutrition Assistance Program Federal Share of Certification Costs - FY 2007 - FY 2008

STATE	Federal Share Certification Costs - FY 2007	Federal Share Certification Costs - FY 2008	Percent Change
Connecticut	\$8,040,247	\$9,839,658	22.38%
Maine	\$2,741,326	\$4,867,771	77.57%
Massachusetts	\$30,602,455	\$31,337,517	2.40%
New Hampshire	\$1,035,510	\$1,105,371	6.75%
New York	\$130,125,916	\$143,582,625	10.34%
Rhode Island	\$2,616,165	\$2,516,132	-3.82%
Vermont	\$703,498	\$778,299	10.63%
Delaware	\$4,265,264	\$10,016,911	134.85%
District of Columbia	\$8,046,658	\$9,375,459	16.51%
Maryland	\$31,673,831	\$31,857,814	0.58%
New Jersey	\$51,297,791	\$50,308,426	-1.93%
Pennsylvania	\$84,696,689	\$84,376,621	-0.38%
Virgin Islands	\$2,511,692	\$2,608,249	3.84%
Virginia	\$56,351,436	\$60,040,756	6.55%
West Virginia	\$7,005,943	\$7,676,159	9.57%
Alabama	\$20,722,695	\$21,650,608	4.48%
Florida	\$35,922,600	\$42,328,397	17.83%
Georgia	\$42,174,314	\$48,130,178	14.12%
Kentucky	\$24,707,874	\$25,504,733	3.23%
Mississippi	\$18,495,680	\$20,466,083	10.65%
North Carolina	\$47,688,914	\$51,559,260	8.12%
South Carolina	\$9,618,641	\$9,586,872	-0.33%
Tennessee	\$32,788,937	\$32,673,980	-0.35%
Illinois	\$58,503,820	\$64,136,139	9.63%
Indiana	\$31,639,703	\$39,298,886	24.21%
Michigan	\$67,993,864	\$75,272,697	10.71%
Minnesota	\$27,997,684	\$30,863,102	10.23%
Ohio	\$54,443,065	\$49,305,140	-9.44%
Wisconsin	\$14,629,296	\$16,039,689	9.64%
Arkansas	\$18,571,012	\$18,528,866	-0.23%
Louisiana	\$38,170,265	\$62,825,122	64.59%
New Mexico	\$14,172,192	\$18,045,294	27.33%
Oklahoma	\$29,712,308	\$28,840,190	-2.94%
Texas	\$96,341,195	\$111,739,676	15.98%
Colorado	\$17,174,722	\$21,051,237	22.57%
Iowa	\$11,019,519	\$14,021,762	27.24%
Kansas	\$10,779,703	\$10,814,408	0.32%
Missouri	\$26,886,395	\$31,618,409	17.60%
Montana	\$4,378,383	\$4,688,326	7.08%
Nebraska	\$8,688,375	\$8,424,669	-3.04%
North Dakota	\$3,396,573	\$3,611,520	6.33%
South Dakota	\$3,708,097	\$4,000,604	7.89%
Utah	\$13,198,981	\$14,590,016	10.54%
Wyoming	\$840,544	\$823,964	-1.97%
Alaska	\$7,039,136	\$8,088,551	14.91%
Arizona	\$21,427,591	\$23,859,983	11.35%
California	\$202,467,011	\$206,834,598	2.16%
Guam	\$543,235	\$539,994	-0.60%
Hawaii	\$7,149,367	\$8,226,466	15.07%
Idaho	\$5,764,428	\$5,609,735	-2.68%
Nevada	\$9,106,604	\$9,380,988	3.01%
Oregon	\$27,409,435	\$31,335,252	14.32%
Washington	\$26,368,099	\$26,256,878	-0.42%
US	\$1,513,354,678	\$1,650,860,040	9.09%

TABLE 38: Supplemental Nutrition Assistance Program Federal Share of Certification Costs per Case per Month - FY 2007 - FY 2008

STATE	Federal Share Cert Cost Per Case Per Month Costs - FY 2007	Federal Share Cert Cost Per Case Per Month Costs - FY 2008	Percent Change
Connecticut	\$5.92	\$6.80	14.88%
Maine	\$2.79	\$4.69	67.93%
Massachusetts	\$10.63	\$9.80	-7.83%
New Hampshire	\$2.99	\$2.95	-1.43%
New York	\$11.39	\$11.54	1.29%
Rhode Island	\$5.95	\$5.05	-15.17%
Vermont	\$2.25	\$2.35	4.24%
Delaware	\$12.21	\$25.67	110.32%
District of Columbia	\$14.86	\$16.37	10.18%
Maryland	\$17.93	\$15.88	-11.44%
New Jersey	\$21.51	\$19.88	-7.58%
Pennsylvania	\$13.31	\$12.58	-5.49%
Virgin Islands	\$43.96	\$43.16	-1.82%
Virginia	\$20.39	\$20.37	-0.10%
West Virginia	\$4.86	\$5.15	5.99%
Alabama	\$7.82	\$7.79	-0.40%
Florida	\$4.77	\$4.73	-0.79%
Georgia	\$9.08	\$9.61	5.87%
Kentucky	\$7.72	\$7.49	-2.99%
Mississippi	\$8.62	\$9.05	4.95%
North Carolina	\$10.16	\$10.25	0.87%
South Carolina	\$3.44	\$3.12	-9.06%
Tennessee	\$7.05	\$6.63	-5.94%
Illinois	\$8.57	\$8.97	4.70%
Indiana	\$10.39	\$12.23	17.73%
Michigan	\$10.20	\$10.62	4.11%
Minnesota	\$17.71	\$18.32	3.44%
Ohio	\$9.21	\$7.80	-15.28%
Wisconsin	\$7.52	\$7.39	-1.70%
Arkansas	\$9.79	\$9.78	-0.09%
Louisiana	\$11.95	\$16.11	34.80%
New Mexico	\$12.82	\$15.70	22.44%
Oklahoma	\$14.05	\$13.62	-3.04%
Texas	\$8.48	\$9.36	10.44%
Colorado	\$13.39	\$16.03	19.76%
Iowa	\$8.49	\$9.93	17.00%
Kansas	\$10.84	\$10.51	-3.07%
Missouri	\$7.44	\$8.39	12.85%
Montana	\$10.48	\$11.01	5.07%
Nebraska	\$13.97	\$13.48	-3.47%
North Dakota	\$13.88	\$13.79	-0.64%
South Dakota	\$12.48	\$12.73	1.98%
Utah	\$21.66	\$22.63	4.51%
Wyoming	\$7.37	\$7.18	-2.64%
Alaska	\$27.52	\$30.67	11.47%
Arizona	\$8.03	\$7.69	-4.25%
California	\$20.40	\$18.85	-7.55%
Guam	\$5.72	\$5.42	-5.14%
Hawaii	\$13.13	\$14.04	6.95%
Idaho	\$13.35	\$11.45	-14.23%
Nevada	\$13.31	\$11.60	-12.82%
Oregon	\$10.09	\$10.73	6.42%
Washington	\$8.06	\$7.48	-7.20%
US	\$10.70	\$10.81	1.04%

TABLE 39: Supplemental Nutrition Assistance Program Federal Share of Total Admin. Costs - FY 2007 - FY 2008

STATE	Federal Share Total Admin Cost FY 2007	Federal Share Total Admin Cost FY 2008	Percent Change
Connecticut	\$24,419,710	\$26,199,231	7.29%
Maine	\$9,371,839	\$12,354,470	31.83%
Massachusetts	\$44,326,213	\$47,084,007	6.22%
New Hampshire	\$5,845,360	\$6,248,917	6.90%
New York	\$286,783,016	\$319,238,285	11.32%
Rhode Island	\$9,213,044	\$8,327,798	-9.61%
Vermont	\$8,362,362	\$8,455,094	1.11%
Delaware	\$8,378,101	\$15,597,154	86.17%
District of Columbia	\$13,338,772	\$15,387,060	15.36%
Maryland	\$43,792,741	\$42,338,190	-3.32%
New Jersey	\$95,845,225	\$101,407,258	5.80%
Pennsylvania	\$150,243,481	\$154,829,823	3.05%
Virgin Islands	\$4,253,559	\$4,544,094	6.83%
Virginia	\$79,187,040	\$86,085,387	8.71%
West Virginia	\$14,382,841	\$15,223,927	5.85%
Alabama	\$31,614,793	\$32,823,684	3.82%
Florida	\$69,401,502	\$76,765,607	10.61%
Georgia	\$60,431,340	\$69,663,527	15.28%
Kentucky	\$34,461,956	\$38,453,140	11.58%
Mississippi	\$27,075,725	\$27,860,614	2.90%
North Carolina	\$66,429,491	\$68,448,221	3.04%
South Carolina	\$19,165,161	\$18,249,024	-4.78%
Tennessee	\$50,689,696	\$48,826,274	-3.68%
Illinois	\$103,020,671	\$109,116,615	5.92%
Indiana	\$46,082,270	\$56,913,500	23.50%
Michigan	\$94,800,678	\$115,079,853	21.39%
Minnesota	\$48,756,472	\$53,027,709	8.76%
Ohio	\$116,727,810	\$116,679,075	-0.04%
Wisconsin	\$43,618,437	\$43,768,722	0.34%
Arkansas	\$25,941,615	\$26,027,463	0.33%
Louisiana	\$48,921,282	\$74,152,775	51.58%
New Mexico	\$19,345,158	\$23,182,521	19.84%
Oklahoma	\$41,691,310	\$38,539,210	-7.56%
Texas	\$153,861,282	\$173,225,711	12.59%
Colorado	\$31,985,555	\$38,359,875	19.93%
Iowa	\$17,570,000	\$21,557,326	22.69%
Kansas	\$16,842,413	\$17,932,530	6.47%
Missouri	\$44,125,779	\$50,243,055	13.86%
Montana	\$8,684,238	\$9,124,596	5.07%
Nebraska	\$15,514,679	\$13,961,388	-10.01%
North Dakota	\$6,306,016	\$6,418,983	1.79%
South Dakota	\$7,264,509	\$7,953,122	9.48%
Utah	\$20,970,401	\$23,247,829	10.86%
Wyoming	\$4,818,611	\$5,137,803	6.62%
Alaska	\$9,769,380	\$11,118,809	13.81%
Arizona	\$42,258,178	\$46,454,582	9.93%
California	\$491,553,000	\$510,126,304	3.78%
Guam	\$1,696,643	\$1,898,814	11.92%
Hawaii	\$11,680,074	\$13,464,033	15.27%
Idaho	\$11,205,442	\$10,917,661	-2.57%
Nevada	\$13,079,460	\$13,770,397	5.28%
Oregon	\$44,587,958	\$51,425,966	15.34%
Washington	\$48,122,432	\$50,339,776	4.61%
US	\$2,747,814,721	\$2,977,576,789	8.36%

TABLE 40: Supplemental Nutrition Assistance Program Federal Share of Total Cost per Case per Month - FY 2007 - FY 2008

STATE	Federal Share Total Cost Per Case Per Month Costs - FY 2007	Federal Share Total Cost Per Case Per Month Costs - FY 2008	Percent Change
Connecticut	\$17.98	\$18.11	0.72%
Maine	\$9.55	\$11.91	24.67%
Massachusetts	\$15.40	\$14.73	-4.39%
New Hampshire	\$16.88	\$16.67	-1.28%
New York	\$25.11	\$25.66	2.19%
Rhode Island	\$20.95	\$16.70	-20.27%
Vermont	\$26.76	\$25.49	-4.73%
Delaware	\$23.98	\$39.98	66.72%
District of Columbia	\$24.63	\$26.87	9.09%
Maryland	\$24.79	\$21.10	-14.88%
New Jersey	\$40.19	\$40.08	-0.29%
Pennsylvania	\$23.61	\$23.08	-2.24%
Virgin Islands	\$74.45	\$75.19	1.00%
Virginia	\$28.66	\$29.21	1.93%
West Virginia	\$9.98	\$10.22	2.40%
Alabama	\$11.93	\$11.80	-1.02%
Florida	\$9.21	\$8.58	-6.87%
Georgia	\$13.00	\$13.91	6.94%
Kentucky	\$10.77	\$11.29	4.86%
Mississippi	\$12.62	\$12.32	-2.41%
North Carolina	\$14.16	\$13.61	-3.87%
South Carolina	\$6.85	\$5.95	-13.12%
Tennessee	\$10.90	\$9.91	-9.08%
Illinois	\$15.09	\$15.26	1.16%
Indiana	\$15.13	\$17.71	17.06%
Michigan	\$14.22	\$16.23	14.16%
Minnesota	\$30.84	\$31.47	2.05%
Ohio	\$19.74	\$18.46	-6.49%
Wisconsin	\$22.42	\$20.17	-10.03%
Arkansas	\$13.67	\$13.74	0.47%
Louisiana	\$15.32	\$19.02	24.14%
New Mexico	\$17.51	\$20.17	15.24%
Oklahoma	\$19.71	\$18.20	-7.66%
Texas	\$13.54	\$14.51	7.20%
Colorado	\$24.93	\$29.22	17.18%
Iowa	\$13.54	\$15.27	12.82%
Kansas	\$16.93	\$17.42	2.87%
Missouri	\$12.20	\$13.33	9.27%
Montana	\$20.78	\$21.42	3.10%
Nebraska	\$24.94	\$22.34	-10.42%
North Dakota	\$25.77	\$24.51	-4.88%
South Dakota	\$24.46	\$25.31	3.48%
Utah	\$34.41	\$36.07	4.81%
Wyoming	\$42.28	\$44.77	5.90%
Alaska	\$38.19	\$42.16	10.41%
Arizona	\$15.84	\$14.97	-5.47%
California	\$49.52	\$46.50	-6.09%
Guam	\$17.86	\$19.08	6.80%
Hawaii	\$21.45	\$22.98	7.14%
Idaho	\$25.95	\$22.28	-14.13%
Nevada	\$19.11	\$17.03	-10.90%
Oregon	\$16.41	\$17.62	7.36%
Washington	\$14.71	\$14.34	-2.51%
US	\$19.42	\$19.49	0.36%

TABLE 41: Supplemental Nutrition Assistance Program Total Fair Hearings - FY 2007 - FY 2008

STATE	Fair Hearings Completed FY 2007	Fair Hearings Completed FY 2008	Percent Change
Connecticut	357	333	-6.72%
Maine	82	63	-23.17%
Massachusetts	748	988	32.09%
New Hampshire	6	6	0.00%
New York	6,167	6,318	2.45%
Rhode Island	122	25	-79.51%
Vermont	13	21	61.54%
Delaware	40	58	45.00%
District of Columbia	0	0	N/A
Maryland	75	89	18.67%
New Jersey	52	40	-23.08%
Pennsylvania	8,272	8,861	7.12%
Virgin Islands	2	2	0.00%
Virginia	205	360	75.61%
West Virginia	70	58	-17.14%
Alabama	161	205	27.33%
Florida	594	668	12.46%
Georgia	1,825	1,437	-21.26%
Kentucky	83	109	31.33%
Mississippi	282	250	-11.35%
North Carolina	1,232	1,176	-4.55%
South Carolina	173	252	45.66%
Tennessee	2,206	4,737	114.73%
Illinois	139	228	64.03%
Indiana	205	265	29.27%
Michigan	798	815	2.13%
Minnesota	981	1,081	10.19%
Ohio	3,986	4,564	14.50%
Wisconsin	0	1,476	N/A
Arkansas	197	293	48.73%
Louisiana	187	257	37.43%
New Mexico	94	70	-25.53%
Oklahoma	41	35	-14.63%
Texas	17,716	12,923	-27.05%
Colorado	144	105	-27.08%
Iowa	144	182	26.39%
Kansas	160	152	-5.00%
Missouri	531	537	1.13%
Montana	91	87	-4.40%
Nebraska	217	235	8.29%
North Dakota	5	4	-20.00%
South Dakota	18	20	11.11%
Utah	34	22	-35.29%
Wyoming	3	6	100.00%
Alaska	20	54	170.00%
Arizona	345	462	33.91%
California	2,503	3,143	25.57%
Guam	0	13	N/A
Hawaii	52	25	-51.92%
Idaho	168	154	-8.33%
Nevada	43	52	20.93%
Oregon	180	133	-26.11%
Washington	267	2,918	992.88%
US	52,093	56,367	8.20%

TABLE 42: Supplemental Nutrition Assistance Program - Fraud Investigations - FY 2007 - FY 2008

STATE	Total Investigations Completed FY 2007	Total Investigations Completed FY 2008	Percent Change
Connecticut	3,011	2,663	-11.56%
Maine	1,600	160	-90.00%
Massachusetts	3,393	3,193	-5.89%
New Hampshire	1,023	1,201	17.40%
New York	150,462	161,174	7.12%
Rhode Island	2,078	1,810	-12.90%
Vermont	201	193	-3.98%
Delaware	48,167	62,044	28.81%
District of Columbia	1,801	1,017	-43.53%
Maryland	1,425	600	-57.89%
New Jersey	13,800	16,094	16.62%
Pennsylvania	21,013	21,827	3.87%
Virgin Islands	1,089	1,018	-6.52%
Virginia	8,839	9,629	8.94%
West Virginia	2,084	1,257	-39.68%
Alabama	2,194	1,979	-9.80%
Florida	43,425	51,445	18.47%
Georgia	12,506	14,106	12.79%
Kentucky	609	1,135	86.37%
Mississippi	1,376	1,090	-20.78%
North Carolina	9,386	11,179	19.10%
South Carolina	6,436	210	-96.74%
Tennessee	3,384	7,613	124.97%
Illinois	4,848	5,124	5.69%
Indiana	1,223	872	-28.70%
Michigan	6,759	6,073	-10.15%
Minnesota	7,014	6,318	-9.92%
Ohio	25,401	26,876	5.81%
Wisconsin	0	3,202	N/A
Arkansas	12,117	1,320	-89.11%
Louisiana	675	923	36.74%
New Mexico	274	336	22.63%
Oklahoma	4,041	3,391	-16.09%
Texas	15,233	10,579	-30.55%
Colorado	5,157	5,599	8.57%
Iowa	2,029	2,235	10.15%
Kansas	2,142	2,133	-0.42%
Missouri	1,468	1,268	-13.62%
Montana	523	360	-31.17%
Nebraska	236	302	27.97%
North Dakota	5	3	-40.00%
South Dakota	570	587	2.98%
Utah	5,050	4,229	-16.26%
Wyoming	134	163	21.64%
Alaska	1,093	964	-11.80%
Arizona	12,803	12,104	-5.46%
California	257,975	289,408	12.18%
Guam	246	387	57.32%
Hawaii	881	788	-10.56%
Idaho	376	624	65.96%
Nevada	2,580	2,653	2.83%
Oregon	2,200	1,908	-13.27%
Washington	12,594	13,439	6.71%
US	724,949	783,725	8.11%

TABLE 43: Supplemental Nutrition Assistance Program - Total Disqualifications - FY 2007 - FY 2008

STATE	Total Disqualified FY 2007	Total Disqualified FY 2008	Percent Change
Connecticut	75	73	-2.67%
Maine	95	50	-47.37%
Massachusetts	603	473	-21.56%
New Hampshire	95	94	-1.05%
New York	1,853	2,269	22.45%
Rhode Island	31	3	-90.32%
Vermont	91	89	-2.20%
Delaware	60	69	15.00%
District of Columbia	34	12	-64.71%
Maryland	47	95	102.13%
New Jersey	1,354	914	-32.50%
Pennsylvania	646	708	9.60%
Virgin Islands	14	10	-28.57%
Virginia	1,037	854	-17.65%
West Virginia	361	188	-47.92%
Alabama	414	346	-16.43%
Florida	4,352	3,756	-13.69%
Georgia	3,414	3,181	-6.82%
Kentucky	285	192	-32.63%
Mississippi	3,365	3,071	-8.74%
North Carolina	1,580	1,671	5.76%
South Carolina	1,319	1,291	-2.15%
Tennessee	3,284	3,879	18.12%
Illinois	1,134	1,376	21.34%
Indiana	185	213	15.14%
Michigan	3,043	2,885	-5.19%
Minnesota	2,000	1,097	-45.15%
Ohio	2,543	2,947	15.89%
Wisconsin	0	52	N/A
Arkansas	1,186	503	-57.59%
Louisiana	442	547	23.76%
New Mexico	110	86	-21.82%
Oklahoma	1,124	924	-17.79%
Texas	7,523	6,849	-8.96%
Colorado	541	721	33.27%
Iowa	133	157	18.05%
Kansas	212	176	-16.98%
Missouri	657	539	-17.96%
Montana	396	792	100.00%
Nebraska	101	85	-15.84%
North Dakota	132	79	-40.15%
South Dakota	119	122	2.52%
Utah	578	411	-28.89%
Wyoming	18	25	38.89%
Alaska	156	136	-12.82%
Arizona	52	30	-42.31%
California	2,212	1,996	-9.76%
Guam	90	75	-16.67%
Hawaii	378	356	-5.82%
Idaho	192	283	47.40%
Nevada	928	1,019	9.81%
Oregon	434	725	67.05%
Washington	6	16	166.67%
US	51,034	48,311	-5.34%

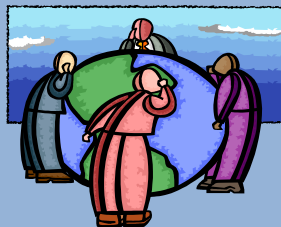
TABLE 44: Supplemental Nutrition Assistance Program - Recipient Claims Established - FY 2007 - FY 2008

STATE	Total Claims Established FY 2007	Total Claims Established FY 2008	Percent Change
Connecticut	\$1,365,281	\$1,061,352	-22.26%
Maine	\$1,684,920	\$1,511,641	-10.28%
Massachusetts	\$1,642,825	\$1,617,946	-1.51%
New Hampshire	\$455,019	\$464,817	2.15%
New York	\$5,921,311	\$5,919,506	-0.03%
Rhode Island	\$443,766	\$392,727	-11.50%
Vermont	\$435,077	\$437,663	0.59%
Delaware	\$809,064	\$691,540	-14.53%
District of Columbia	\$1,268,283	\$1,385,780	9.26%
Maryland	\$1,937,307	\$1,975,448	1.97%
New Jersey	\$7,194,060	\$8,178,406	13.68%
Pennsylvania	\$8,595,170	\$9,723,715	13.13%
Virgin Islands	\$238,477	\$265,496	11.33%
Virginia	\$3,487,573	\$4,148,342	18.95%
West Virginia	\$1,980,106	\$2,203,631	11.29%
Alabama	\$3,404,902	\$3,634,988	6.76%
Florida	\$15,769,974	\$17,562,526	11.37%
Georgia	\$7,667,823	\$10,567,114	37.81%
Kentucky	\$3,690,006	\$5,104,679	38.34%
Mississippi	\$3,601,323	\$4,858,902	34.92%
North Carolina	\$8,192,767	\$9,385,074	14.55%
South Carolina	\$6,599,565	\$8,280,969	25.48%
Tennessee	\$12,811,559	\$14,092,405	10.00%
Illinois	\$24,040,207	\$26,540,761	10.40%
Indiana	\$2,188,627	\$1,810,096	-17.30%
Michigan	\$3,631,866	\$3,982,831	9.66%
Minnesota	\$5,923,413	\$6,337,178	6.99%
Ohio	\$8,714,102	\$9,859,883	13.15%
Wisconsin	\$2,637,355	\$3,074,891	16.59%
Arkansas	\$1,252,257	\$1,397,655	11.61%
Louisiana	\$1,835,972	\$2,492,509	35.76%
New Mexico	\$1,680,834	\$1,874,939	11.55%
Oklahoma	\$1,906,160	\$1,400,666	-26.52%
Texas	\$27,988,817	\$18,680,352	-33.26%
Colorado	\$11,586,120	\$13,693,960	18.19%
Iowa	\$1,110,426	\$1,332,306	19.98%
Kansas	\$1,877,476	\$1,936,531	3.15%
Missouri	\$2,978,687	\$3,772,161	26.64%
Montana	\$1,264,207	\$1,310,492	3.66%
Nebraska	\$903,069	\$1,194,371	32.26%
North Dakota	\$355,144	\$347,676	-2.10%
South Dakota	\$596,610	\$642,617	7.71%
Utah	\$1,505,282	\$1,157,495	-23.10%
Wyoming	\$112,865	\$70,474	-37.56%
Alaska	\$395,930	\$322,454	-18.56%
Arizona	\$1,918,797	\$1,933,658	0.77%
California	\$87,171,118	\$98,276,574	12.74%
Guam	\$227,294	\$203,085	-10.65%
Hawaii	\$1,883,945	\$1,840,240	-2.32%
Idaho	\$528,952	\$594,321	12.36%
Nevada	\$688,189	\$514,053	-25.30%
Oregon	\$6,533,405	\$6,320,987	-3.25%
Washington	\$3,489,119	\$4,343,359	24.48%
US	\$306,122,403	\$330,723,238	8.04%

TABLE 45: Supplemental Nutrition Assistance Program - Recipient Claims Collected - FY 2007 - FY 2008

STATE	Total Claims Collected FY 2007	Total Claims Collected FY 2008	Percent Change
Connecticut	\$1,239,310	\$1,251,681	1.00%
Maine	\$1,299,638	\$1,420,248	9.28%
Massachusetts	\$1,504,301	\$1,544,417	2.67%
New Hampshire	\$383,597	\$399,183	4.06%
New York	\$6,279,520	\$6,466,881	2.98%
Rhode Island	\$663,319	\$700,133	5.55%
Vermont	\$337,187	\$379,291	12.49%
Delaware	\$672,672	\$777,364	15.56%
District of Columbia	\$872,969	\$711,435	-18.50%
Maryland	\$2,072,883	\$1,557,973	-24.84%
New Jersey	\$7,423,295	\$8,624,286	16.18%
Pennsylvania	\$8,562,931	\$10,690,214	24.84%
Virgin Islands	\$174,095	\$193,017	10.87%
Virginia	\$2,584,810	\$2,846,073	10.11%
West Virginia	\$2,691,570	\$2,616,690	-2.78%
Alabama	\$1,944,506	\$3,262,532	67.78%
Florida	\$11,647,457	\$12,421,794	6.65%
Georgia	\$6,716,106	\$7,520,908	11.98%
Kentucky	\$2,215,973	\$2,925,548	32.02%
Mississippi	\$4,583,829	\$5,134,830	12.02%
North Carolina	\$5,666,555	\$6,991,193	23.38%
South Carolina	\$8,242,660	\$7,990,133	-3.06%
Tennessee	\$7,263,951	\$9,128,738	25.67%
Illinois	\$16,770,438	\$21,743,121	29.65%
Indiana	\$3,058,981	\$2,792,350	-8.72%
Michigan	\$5,769,140	\$4,655,260	-19.31%
Minnesota	\$5,257,087	\$5,905,978	12.34%
Ohio	\$7,334,413	\$8,235,106	12.28%
Wisconsin	\$2,008,356	\$2,517,814	25.37%
Arkansas	\$875,749	\$1,196,578	36.63%
Louisiana	\$2,031,344	\$2,384,113	17.37%
New Mexico	\$1,200,741	\$1,391,401	15.88%
Oklahoma	\$1,479,456	\$1,478,658	-0.05%
Texas	\$10,641,754	\$23,500,049	120.83%
Colorado	\$6,573,959	\$6,687,880	1.73%
Iowa	\$635,435	\$1,043,221	64.17%
Kansas	\$1,487,586	\$1,763,273	18.53%
Missouri	\$2,477,937	\$2,914,497	17.62%
Montana	\$759,464	\$965,804	27.17%
Nebraska	\$957,467	\$1,102,328	15.13%
North Dakota	\$377,767	\$360,446	-4.59%
South Dakota	\$410,649	\$592,079	44.18%
Utah	\$1,360,491	\$1,207,512	-11.24%
Wyoming	\$158,006	\$96,413	-38.98%
Alaska	\$291,398	\$450,849	54.72%
Arizona	\$2,285,644	\$2,269,803	-0.69%
California	\$40,790,306	\$66,058,514	61.95%
Guam	\$110,320	\$151,057	36.93%
Hawaii	\$1,947,138	\$2,133,435	9.57%
Idaho	\$459,987	\$551,948	19.99%
Nevada	\$661,966	\$733,180	10.76%
Oregon	\$6,583,696	\$6,861,411	4.22%
Washington	\$2,735,211	\$3,384,657	23.74%
US	\$212,535,021	\$270,683,298	27.36%

MULTI-YEAR NATIONAL DATA



Supplemental Nutrition Assistance Program Issuance and Participation - FY 2004 - 2008

	FY 2004	FY 2005	FY 2006	FY 2007	FY 2008
<u>TOTAL PARTICIPATION AND ISSUANCE</u>					
PERSONS (MONTHLY) (IN MIL)	23.9	25.7	26.7	26.5	28.4
HOUSEHOLDS (MONTHLY) (IN MIL)	10.3	11.2	11.7	11.8	12.7
ISSUANCE (IN MIL \$)	\$24,477	\$28,566	\$30,185	\$30,373	\$34,608
AVG MONTHLY BENEFIT PER PERSON	\$85.50	\$92.56	\$94.31	\$95.63	\$101.52
AVG MONTHLY BENEFIT PER HSHLD	\$198.44	\$212.59	\$214.37	\$214.69	\$226.57
<u>EBT</u>					
PERSONS (MONTHLY) (IN MIL)	23.6	25.6	26.6	26.4	28.3
HOUSEHOLDS (MONTHLY) (IN MIL)	10.1	11.1	11.1	11.7	12.7
ISSUANCE (IN MIL \$)	\$24,114	\$28,510	\$30,125	\$30,314	\$34,544
% OF TOTAL ISSUANCE	98.52%	99.81%	99.80%	99.81%	99.81%
% OF TOTAL HOUSEHOLDS	98.06%	99.41%	99.42%	99.42%	99.47%
<u>COUPON</u>					
PERSONS (MONTHLY) (IN MIL)	0.2	0	0	0	0
HOUSEHOLDS (MONTHLY) (IN MIL)	0.1	0	0	0	0
COUPON ISSUANCE (IN MIL \$)	\$314	\$0	\$0	\$0	\$0
% OF TOTAL ISSUANCE	1.28%	0.00%	0.00%	0.00%	0.00%
% OF TOTAL HOUSEHOLDS	0.97%	0.00%	0.00%	0.00%	0.00%
<u>CASH-OUT</u>					
PERSONS (MONTHLY) (IN MIL)	0.1	0.1	0.1	0.1	0.1
HOUSEHOLDS (MONTHLY) (IN MIL)	0.1	0.1	0.1	0.1	0.1
ISSUANCE (IN MIL \$)	\$50	\$52	\$57	\$56	\$61
% OF TOTAL ISSUANCE	0.20%	0.18%	19.00%	0.18%	0.18%
% OF TOTAL HOUSEHOLDS	0.97%	0.89%	85.00%	0.85%	0.79%

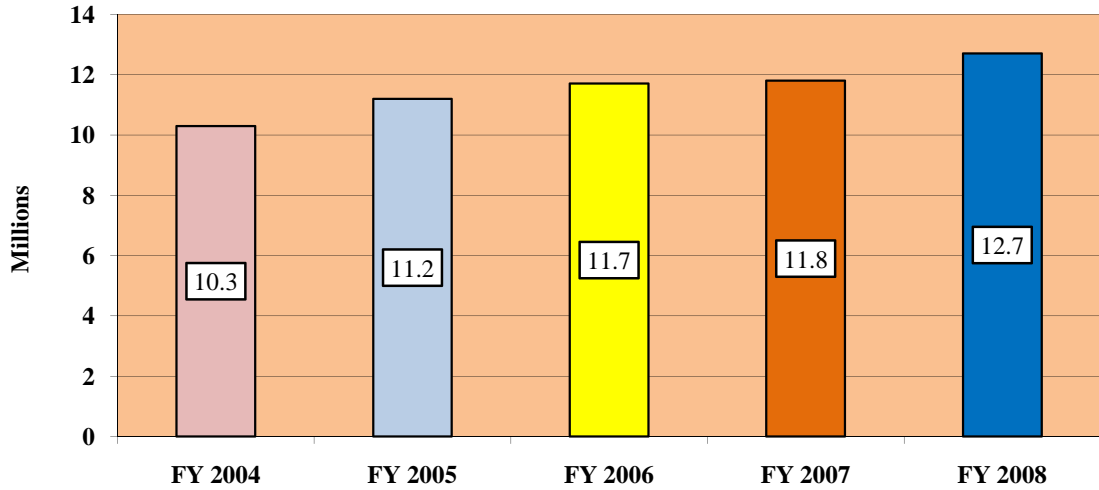
NOTE: TOTALS MAY NOT ADD DUE TO ROUNDING.

Source: FNS-388/46

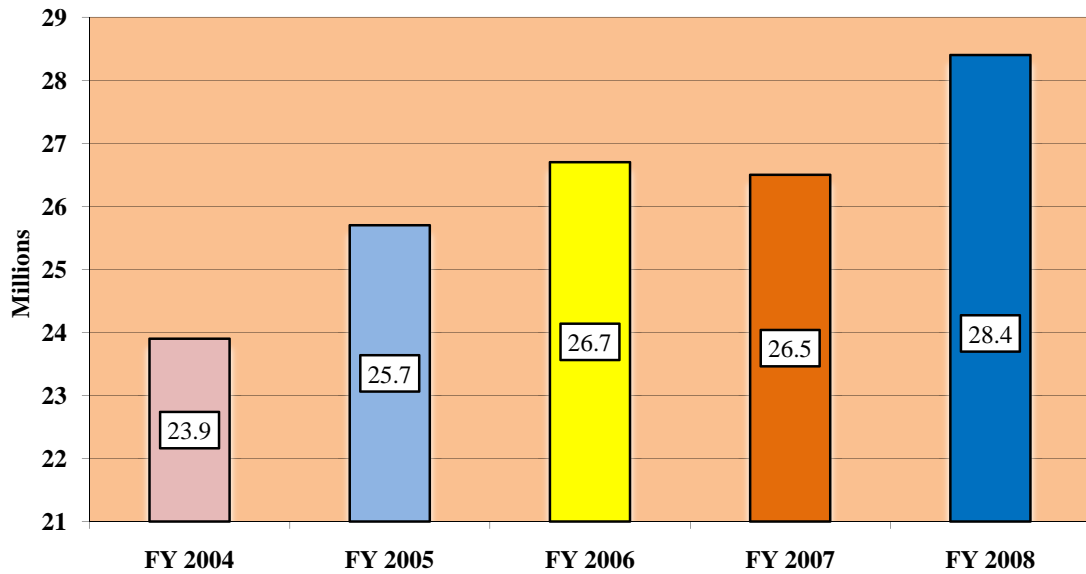
DATA AS OF: 12/09

CHANGES IN PERSON & HOUSEHOLDS PARTICIPATING FY 2004 - FY 2008

HOUSEHOLDS PARTICIPATING
FY 2004 - FY 2008



PERSONS PARTICIPATING
FY 2004 - FY 2008



Supplemental Nutrition Assistance Program Recipient Fraud Activity - FY 2004 - 2008

	FY 2004	FY 2005	FY 2006	FY 2007	FY 2008
<u>INVESTIGATIONS</u>					
INV COMPLETED	745,697	771,796	727,322	741,178	783,725
FRAUD \$ DETERMINED BY INV (IN MIL \$)	\$63.80	\$73.32	\$80.86	\$96.21	\$93.51
<u>PROSECUTIONS</u>					
PROS. COMPLETED	8,764	6,889	5,688	5,416	5,806
DISQ CONSENT AGRMNTS	9,609	6,389	8,107	9,349	8,305
FRAUD INVOLVED (IN MIL \$)	\$21.7	\$19.2	\$24.1	\$28.0	\$24.9
PERSONS DISQUALIFIED	18,144	13,278	13,612	14,656	13,929
<u>FRAUD HEARINGS</u>					
HEARINGS HELD	15,595	11,776	13,643	17,915	16,215
WAIVED HEARINGS	22,598	19,224	17,450	19,870	19,070
FRAUD INVOLVED (IN MIL \$)	\$29.3	\$26.1	\$28.3	\$35.8	\$36.0
PERSONS DISQUALIFIED	36,944	30,004	29,729	36,435	34,382
<u>TOTALS (PROSECUTIONS & HEARINGS)</u>					
TOTAL DISQUALIFIED	55,088	43,027	43,341	51,091	48,311
TOTAL FRAUD INVOLVED (IN MIL \$)	\$50.9	\$45.3	\$52.4	\$63.8	\$60.9
<u>RECIPIENT CLAIMS</u>					
<u>CLAIMS ESTABLISHED (IN MIL \$)</u>					
FRAUD 1/	\$23.2	\$21.4	\$21.6	\$21.6	\$27.3
NONFRAUD	\$220.2	\$237.9	\$252.7	\$284.5	\$303.5
TOTAL	\$243.4	\$259.4	\$274.3	\$306.1	\$330.7
<u>CLAIMS COLLECTED (IN MIL \$)</u>					
FRAUD	\$58.0	\$57.9	\$57.9	\$53.1	\$61.0
NONFRAUD	\$143.8	\$148.8	\$164.6	\$159.5	\$209.6
TOTAL	\$201.9	\$206.7	\$222.5	\$212.5	\$270.7

TOTALS MAY NOT ADD DUE TO ROUNDING.

1/ SOME STATES ESTABLISH POTENTIAL FRAUD CLAIMS AS HOUSEHOLD ERROR CLAIMS INITIALLY AND THEN TRANSFER THE CLAIM FROM INADVERTENT HOUSEHOLD ERROR TO FRAUD CLAIM AFTER THE PROSECUTION OR FRAUD HEARING. THUS, THE SUM OF THE FRAUD INVOLVED FROM PROSECUTION AND FRAUD HEARINGS IS A BETTER MEASURE OF THE AMOUNT OF FRAUD CLAIMS ULTIMATELY ESTABLISHED.

SOURCE: FNS-366B AND FNS-209

DATA AS OF: 12/09

Supplemental Nutrition Assistance Program Recipient Claims - FY 2004 - 2008

CLAIMS AND COLLECTIONS IN MILLIONS \$ (EXCEPT AVERAGE DOLLAR AMOUNT PER CLAIM)

	FY 2004	FY 2005	FY 2006	FY 2007	FY 2008
<u>NEW CLAIMS ESTABLISHED</u>					
FRAUD	\$23.2	\$21.4	\$21.6	\$21.6	\$27.3
HOUSEHOLD ERROR	\$172.0	\$165.7	\$179.6	\$201.1	\$209.8
AGENCY ERROR	\$48.3	\$72.3	\$73.0	\$83.4	\$93.7
TOTAL	\$243.4	\$259.4	\$274.3	\$306.1	\$330.7
<u>CLAIMS COLLECTED</u>					
FRAUD	\$58.0	\$57.9	\$57.9	\$53.1	\$61.0
HOUSEHOLD ERROR	\$108.5	\$108.6	\$114.4	\$109.6	\$144.1
AGENCY ERROR	\$35.3	\$40.3	\$50.1	\$49.9	\$65.5
TOTAL	\$201.9	\$206.8	\$222.5	\$212.5	\$270.7
STATE SHARE OF COLL	\$42.0	\$42.0	\$43.2	\$40.5	\$50.2
FNS SHARE OF COLL	\$159.9	\$164.8	\$179.3	\$172.0	\$220.5
<u>COLLECTIONS BY COLLECTION METHOD</u>					
RECOUPED	\$101.5	\$96.8	\$92.5	\$87.6	\$102.8
FEDERAL COLL	\$63.2	\$74.4	\$86.3	\$91.7	\$118.5
OTHER	\$37.1	\$35.6	\$43.8	\$34.2	\$49.4
TOTAL	\$201.9	\$206.8	\$222.5	\$222.5	\$270.7
<u>AVERAGE DOLLAR AMOUNT PER CLAIM FOR NEW CLAIMS ESTABLISHED (ACTUAL DOLLARS)</u>					
FRAUD	\$1,208	\$1,194	\$1,323	\$1,333	\$1,704
HOUSEHOLD ERROR	\$512	\$637	\$686	\$720	\$718
AGENCY ERROR	\$232	\$241	\$263	\$277	\$268
ALL CLAIMS	\$432	\$449	\$493	\$513	\$503

TOTALS MAY NOT ADD DUE TO ROUNDING.

SOURCE: FNS-209/FNS FEDERAL DEBT COLLECTIONS BIWEEKLY COLLECTION REPORT

DATA AS OF: 12/09

END NOTES

State Participation and Issuance

Participation data comes from the FNS-388 reports and issuance data comes from the FNS-46. Average monthly participation and household participation in this report may not add for the national total due to rounding. The total participation data in this report is the average monthly participation from all systems for the fiscal year (12-month average). However, on the pages providing the breakdown of the participation data by benefit type the report provides the average monthly participation for the number of months that particular issuance system operated during the year to show the actual monthly participation when that benefit type was used. Not all benefit types were in operation for all 12 months as food packages ended in one state during the year. Because the number of operating months varies by system and by State, the breakdown participation numbers by issuance system do not always add up to the total participation monthly average in all States.

Missouri recently reported that because of a data programming error the number of individuals receiving SNAP benefits has been overstated since 2002. The reported number of SNAP households was not affected by this programming error. FNS is working with Missouri to correct this error; we expect that next year's report will reflect corrections in Missouri's participation data.

Negative coupon issuance occurs when coupons are returned.

Administrative Costs

Administrative Cost data cited in this section is derived from the SF-269;

monthly participation data comes from the FNS-388. We would like to point out that Delaware's Federal Share of Certification Costs and the Federal Cost Per Case per month reflects incorrect reporting by the State of the cost for cases jointly certified in more than one social welfare program. Corrective action is being taken on this situation and we expect that next year's report will reflect corrections to these costs.

Fair Hearings

Fair Hearings data cited in this section is derived from the FNS-366B.

Fraud Investigations, Prosecutions, and Administrative Disqualification Hearings

Fraud Investigations, Prosecutions, and Administrative Disqualification Hearings data cited in this section is derived from the FNS-366B.

Disqualified Recipients – Federal Data Base Status

The data cited in this section is derived from the Electronic Disqualified Recipient Subsystem (eDRS) - a Federal system of records that is used to identify individuals with a prior disqualification record for penalty determination purposes and individuals who are currently serving a disqualification period from another State. eDRS includes both current year and historical disqualifications.

END NOTES

Recipient Claims

Claims data cited in this section is derived from the FNS-209; Federal debt collection data is derived from the FNS Federal Debt Collection Biweekly Collection Report. All recoupment amounts are included in collections data.

Data on new claims established is included in Tables 22, 23 and 24. When referring to data in these tables it should be noted that some States show no or low fraud claims newly established because they establish such claims as household error and subsequently transfer the claim to fraud after the court or hearing officer's determination. Therefore we recommend that the data in Tables 16, 18, and 20 (amount of fraud determined from prosecutions and administrative disqualification hearings and number of fraud determinations) be used as a better measure of the amount of fraud claims ultimately established. Data included in Table 27 (Recipient Claims Collected) includes total claims recouped as well as Federal Debt Collection amounts and other means of collection employed by State agencies.

Calculations for other means of collection employed by State agencies include all State methods except for recoupment and Federal collections from the Treasury Offset Program minus all refunds and negative adjustments.

Calculations for Federal Debt Collection amounts include Treasury Offset Program collections but not voluntary payments and offset fees paid by the client. Totals represented are for calendar year 2008 – however 98% of Federal collections occurred during FY 2008. Some offsets are subject to refunds.

Rankings of Participation and Issuance

Please refer to the explanations above for the sources of various data cited in this section. Note that totals for persons and households may not add due to rounding.

Comparison to Prior Years

Please refer to the explanations above for the sources of various data cited in this section.

