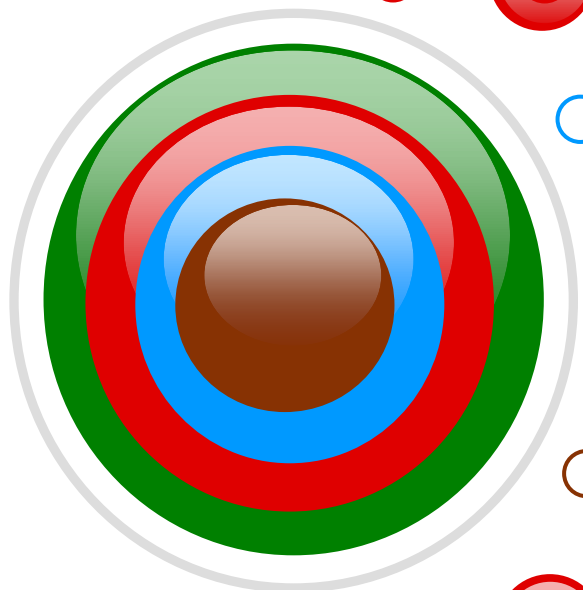


SPIRIT Close-Out & 798 Report Training

**Presented by:
CSC**



Topics to Be Covered



- 1 **Glossary of Terms**
- 2 **FNS Monthly Close-Out Schedule**
- 3 **Function of the FNS 798 Worksheet**
- 4 **Bank Exception Table**
- 5 **One to One Report**



Glossary of Terms

- **Close-Out Month (FNS vs. SPIRIT)**
- **Issue Month**
- **30 Day Month**
- **SPIRIT Close-Out Month**
- **Obligation**
- **Deobligation**



Glossary of Terms

- **Benefit Period**
- **Cycle Adjust**
- **End of Month**
- **Bank Exception Table**
- **Solutran Close-Out Posting Summary**



WIC Close-Out Timeframes

- **WIC Regulations allow 120 days to close-out a report month.**
- **A state may choose to close-out a report month in a quicker time-frame.**
- **WIC End of Fiscal Year = 9/30**
- **WIC End of Fiscal Year Close-Out = 1/31**



FNS Monthly Close-Out Schedule

Report Month

FNS Month to Close-Out

October

January

November

February

December

March

January

April

February

May

March

June

April

July

May

August

June

September

July

October

August

November

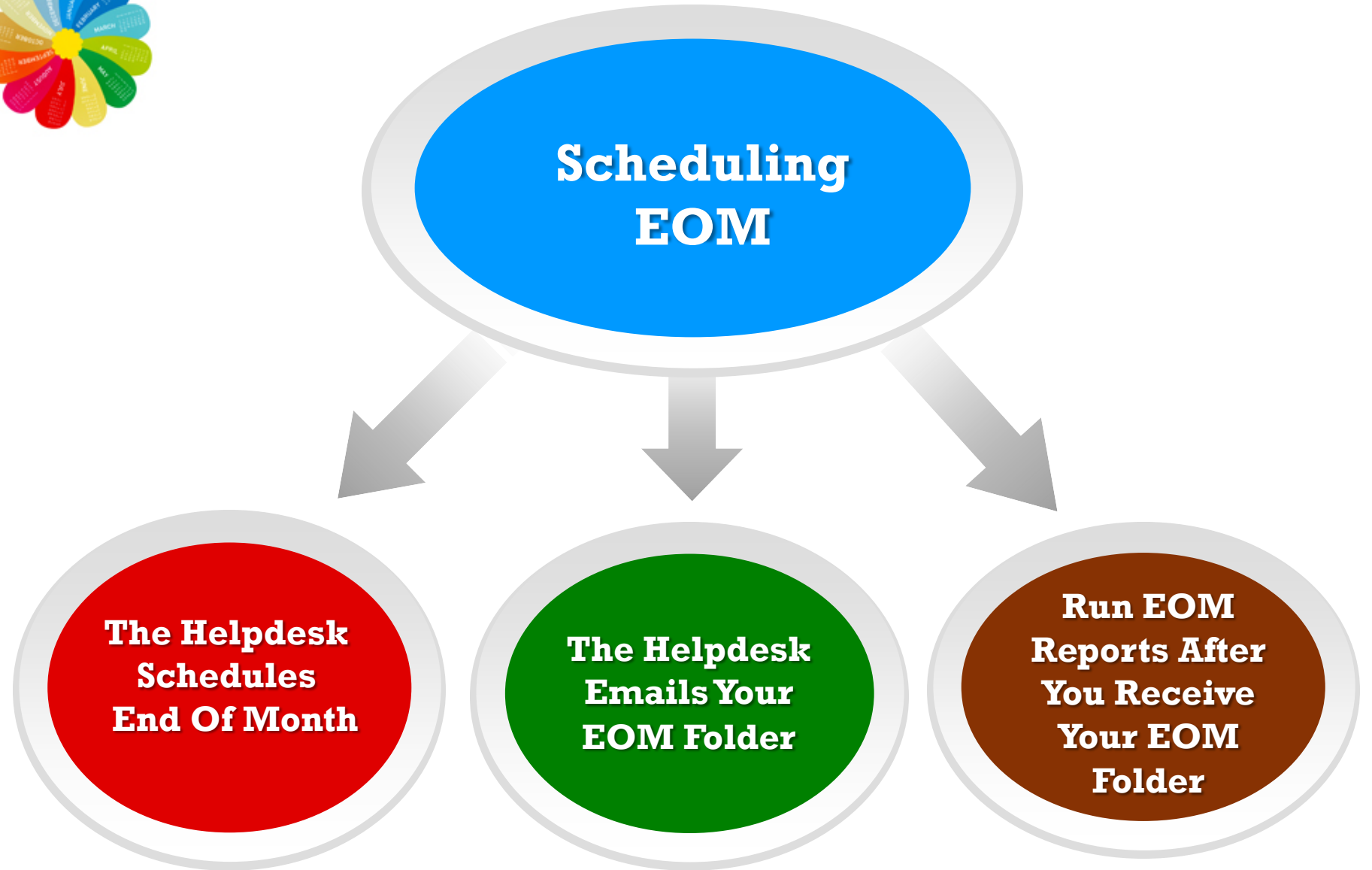
September

December



FNS Monthly Close-Out Schedule

- **The Report Month is not considered officially closed-out until the Y/N indicator is changed when posting the 798 Report into FPRS.**
- **The 798 Report that is posted in the FNS FPRS system is the official 798 of record.**



Scheduling EOM

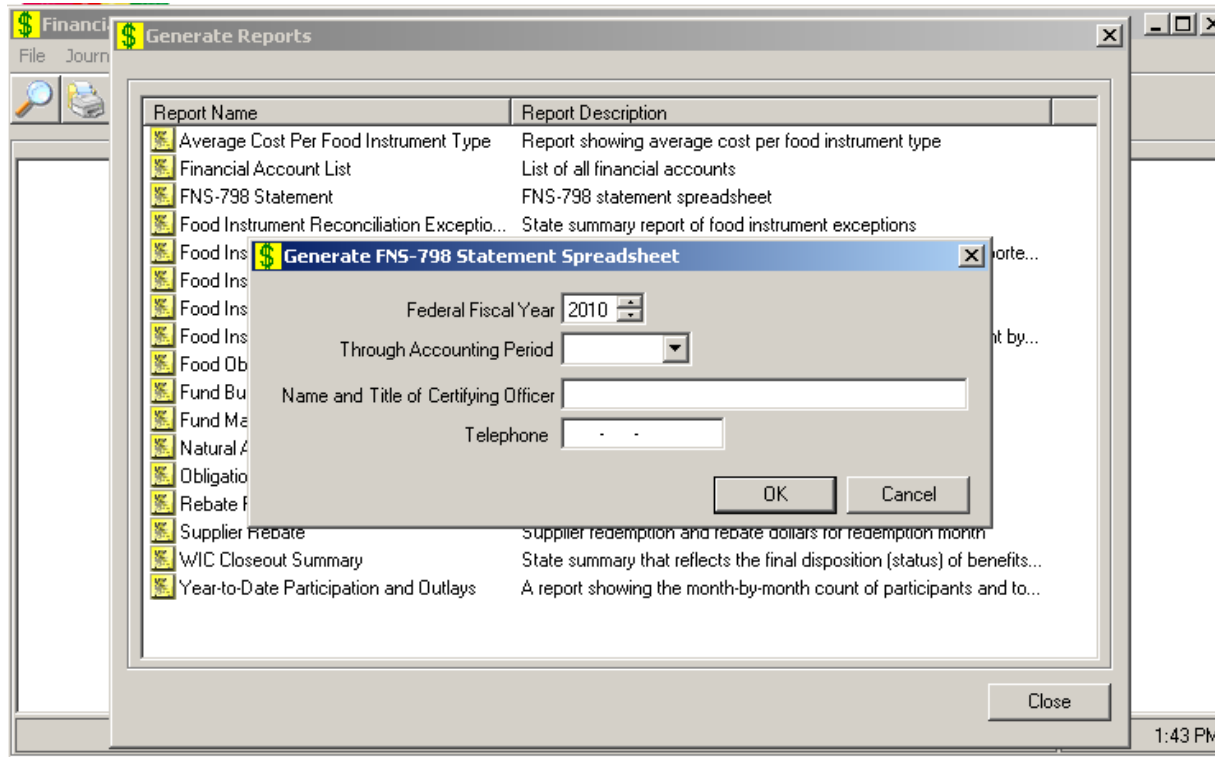
The Helpdesk Schedules End Of Month

The Helpdesk Emails Your EOM Folder

Run EOM Reports After You Receive Your EOM Folder



To Generate the 798 Report



- **Log on to Financial Management**
- **Click on Reports**
- **Select FNS 798 Statement**



\$ Generate FNS-798 Statement Spreadsheet [X]

Federal Fiscal Year

Through Accounting Period

Name and Title of Certifying Officer

Telephone

- **Enter the Federal Fiscal Year**
- **Through Accounting Period / i.e. December**
- **Name and Title of Cert. Officer/Opt. Information**
- **Telephone /Optional Information**
- **Click OK**



SPIRIT 798 Worksheet

- **Is provided as a worksheet for gathering and submitting FNS-798 information to FNS**
- **Accumulates totals for the current federal fiscal year October through September**



SPIRIT 798 Worksheet

- **Is a point-in-time report – totals are calculated based on current redemption data each time it is run**
- **Must be run immediately after month end has run, before any additional bank payments are applied in order to balance to other reports like the Food Obligations and Expenditures**



Page 1 – SPIRIT 798 Worksheet

U. S. DEPARTMENT OF AGRICULTURE - FOOD AND NUTRITION ASSISTANCE
WIC FINANCIAL MANAGEMENT AND REPORTING

According to the Paperwork Reduction Act of 1995, no persons are required to respond to a collection unless it displays a valid OMB control number for this information. The time required to complete this collection is estimated to average 3.1 hours per response, including the time to review instructions, search existing data sources, gather the necessary data, review the collection of information for accuracy, complete and review the collection of information for accuracy, and transmit the information.

STATE	LOC	FEDERAL FISCAL YEAR
Arkansas		2010
SEVEN DIGIT CODE		DATE RECEIVED IN R/O

Food Obligation Estimates	October	November	December	January	February	March
1. Adjusted Gross Obligations	5,619,622	5,525,412	5,621,223	5,528,275	5,302,332	5,587,099
2. Estimated Rebates	0	0	0	0	0	0
3. Net Federal Obligations	5,619,622	5,525,412	5,621,223	5,528,275	5,302,332	5,587,099

Actual Food Outlays	October	November	December	January	February	March
4. Gross Outlays	5,619,622	5,525,412	5,621,223	5,528,275	5,302,332	5,587,099
5. Unliquidated Obligations						
6. Gross Outlays & Unliq.	5,619,622	5,525,412	5,621,223	5,528,275	5,302,332	5,587,099
7. Rebates Billed						
8. Program Income						
9. Postpymt Vendor Collections						
10. Participant Collections						
11. Other Credits						
12. Net Federal Outlays & Unliq.	5,619,622	5,525,412	5,621,223	5,528,275	5,302,332	5,587,099
13. Month Closed Out (Y/N)	Y	Y	Y	Y	Y	Y
14. Annual Net Federal Cost	5,619,622	5,525,412	5,621,223	5,528,275	5,302,332	5,587,099

Federal Participation	October	November	December	January	February	March
15.a. Women Pregnant	11,318	10,943	10,866	10,796	10,714	11,302
b. Women Fully Breastfeeding	1,108	1,472	1,597	1,624	1,586	1,675
c. Women Partially	2,673	1,946	1,655	1,526	1,452	1,403
d. Women Postpartum	10,715	11,079	11,425	11,482	11,188	11,277
e. Total Women	25,814	25,440	25,543	25,428	24,940	25,657
16.a. Infants Fully Breastfed	1,291	1,575	1,522	1,634	1,599	1,659
b. Infants Partially Breastfed	1,105	1,234	1,227	1,121	1,019	963
c. Infants Fully Formula-fed	24,107	23,570	23,578	23,411	23,200	23,549
d. Total Infants	26,503	26,379	26,327	26,166	25,818	26,171
17. Children	47,349	46,614	47,559	46,989	45,745	47,598
18. Total	99,666	98,433	99,429	98,583	96,503	99,426



Food Obligation Estimates Section

Line 1 – Adjusted Gross Obligations

- **Paid amount on the Close Out Month report**
- **Combination of paid amount and obligation on the 30-day and current reports**



Food Obligation Estimates Section

Line 2 Estimated Rebates

- **Estimated if doing fund variants**



One Method To Estimate Rebates

- **Total Amount of Rebates from the Most Recent Closed-Out Month**
- **Divided by the Total Number of Infants for the Most Recent Closed-Out Month**
- **Equals Rebate Cost per Infant**
- **Multiply the Rebate Cost per Infant by the Projected Infant Count for Current Months**



Food Obligation Estimates Section

According to the Paperwork Reduction Act of 1995, no persons are required to respond to this collection of information unless it displays a currently valid control number. The time required to complete this collection is estimated to average 3.1 hours per response.

STATE	LOC
SEVEN DIGIT CODE	

Food Obligation Estimates	October	November
1. Adjusted Gross Obligations	5,619,622	5,525,412
2. Estimated Rebates	0	0
3. Net Federal Obligations	5,619,622	5,525,412

Line 3 Net Federal Obligation

- **Line 1 Adjusted Gross Obligations minus Line 2 Estimated Rebates**



Actual Food Outlays Section

Line 4 – Gross Outlays

- **Participation Month = Column Header**
- **Paid Date > 0**

-Or-

- **Participation Month = 0**
- **Paid date in month**
- **Remember Actual Outlays are updated each day on the SPIRIT 798 since FoodInstrument data is input to this section.**



Actual Food Outlays Section

Line 5 – Unliquidated Obligations

- **Not Paid**
- **Not Void**
- **Not Expired**

Line 6 – Gross Outlays And Unliquidated Obligations

- **Sum of Line 5 and Line 6**



Actual Food Outlays Section

Line 7 – Rebates Billed

- **Units* Rebate per Unit on Rebate Invoice Item**
- **Available only if using Rebate Invoice**

Line 8 – Program Income

- **Manual Entry**



Actual Food Outlays Section

Line 9 – Post payment Vendor Collections

- **Manual Entry**

Line 10 – Participation Collections

- **Manual Entry**



Actual Food Outlays Section

Line 11 – Other Credits

- **Available if Rebates apply to Milk and/or Cheese**
- **Units * Rebate per Unit on Rebate Invoice Item**

Line 12 – Net Federal Outlays And Unliquidated Obligations

- **Sum of Lines 7 – 11**



Actual Food Outlays Section

Line 13 – Month Closed Out (Y/N)

- **FNS Closeout Month Indicator**

Line 14 – Annual Net Federal Cost

- **=Line 12 if month is closed out**
- **=Line 3 if month is not closed out**



Federal Participation Section

- **The EOM CaseLoadCount table is input to the participation section. A participant is counted in only one category each month. The values remain static for current, 30 day and closeout month until the next EOM is completed.**



Federal Participation Section

Line 15 – Women Pregnant

- **Count of pregnant women**
- **Based on the WIC Category of the last food instrument issued in the reporting month**

Line 15b – Woman Breastfeeding

- **Count of breastfeeding women**
- **Based on the WIC Category of the last food instrument issued in the reporting month**



Federal Participation Section

Line 15c – Women Of Postpartum

- **Count of non-breastfeeding women**
- **Based on the WIC Category of the last food instrument issued in the reporting month**

Line 15d – Total Women

- **Sum of Line 15A – Line 15C**



Federal Participation Section

Line 16 – Infants

- **Count of partially breastfed infants**
- **Count of non-breastfeeding infants**
- **Based on the WIC Category on the last food instrument issued in the reporting month**



Federal Participation Section

- **Includes count of fully breastfed infants**
- **Based on link to mother and exclusively BF status**
- **Counted if receiving only cereal and/or juice, but no formula**



Federal Participation Section

Line 17 – Children

- **Count of children based on WIC Category on the last food instrument issued in the reporting month**

Line 18 – Total

- **Sum of Line 15D – Line 17**



Page 1 – FNS 798 Worksheet

Year-to-Date NSA Costs

13. Month Closed Out (Y/N)	Y	Y	Y	Y	Y	Y
14. Annual Net Federal Cost	5,619,622	5,525,412	5,621,223	5,528,275	5,302,332	5,587,099

Federal Participation	October	November	December	January	February	March
15.a. Women Pregnant	11,318	10,943	10,866	10,796	10,714	11,302
b. Women Fully Breastfeeding	1,108	1,472	1,597	1,624	1,586	1,675
c. Women Partially	2,673	1,946	1,655	1,526	1,452	1,403
d. Women Postpartum	10,715	11,079	11,425	11,482	11,188	11,277
e. Total Women	25,814	25,440	25,543	25,428	24,940	25,657
16.a. Infants Fully Breastfed	1,291	1,575	1,522	1,634	1,599	1,659
b. Infants Partially Breastfed	1,105	1,234	1,227	1,121	1,019	963
c. Infants Fully Formula-fed	24,107	23,570	23,578	23,411	23,200	23,549
d. Total Infants	26,503	26,379	26,327	26,166	25,818	26,171
17. Children	47,349	46,614	47,559	46,989	45,745	47,598
18. Total	99,666	98,433	99,429	98,583	96,503	99,426

Year-to-Date NSA Costs	October	November	December	January	February	March
19. Gross Outlays						
20. Unliquidated Obligations						
21. Gross Outlays & Unliq.	0	0	0	0	0	0
22. Program Income						
23. Postpymt Vendor Collections						
24. Participant Collections						
25. Other Credits						
26. Net Federal Outlays & Unliq.	0	0	0	0	0	0
27. Est. Future Month(s) Oblig.						
28. Annual Net Federal Cost	0	0	0	0	0	0



Year To Date NSA Costs Section

Line 19 – Gross Outlays

- **Manual Entry – Enter Amount from State Agency Accounting System**

Line 20 – Unliquidated Obligations

- **Manual Entry – Purchases that are Encumbered But Not Yet Paid**



Year To Date NSA Costs Section

Line 21 – Gross Outlays and Unliquidated Obligations

- **Sum of Line 19 and Line 20**

Line 22 – Program Income

- **Manual Entry – Typically WIC does not have much program income, but could be net profit from sales of WIC Calendar, etc.**



Year To Date NSA Costs Section

Line 23 – Post Payment Vendor Collections

- **Manual Entry – Used More in Voucher System**

Line 24 – Participant Collections

- **Manual Entry – Recouped Funds from Participants for Program Abuse such as Dual Participation**

Line 25 – Other Credits

- **Manual Entry**



Year To Date NSA Costs Section

Line 26 – Net Federal Outlays and Unliquidated Obligations

- **Sum of Line 22-Line 25**

Line 27 – Estimated Future Month(s) Obligations

- **Manual Entry**

Line 28 - Annual Federal Cost

- **Sum of Line 26 and Line 27**



Page 2 of the 798 Report

WIC FINANCIAL MANAGEMENT AND PARTICIPATION REPORT

TRANSACTION	COST CATEGORY		
	(A) FOOD	(B) NSA	(C) TOTAL
29. Formula Grant			0
30. Prior Year Spending Options:			
a. Spendforward from Prior Year			0
b. Backspend to Prior Year			0
31. Subtotal (29 plus 30)	0	0	0
32. Annual Net Federal Cost	66,681,523	0	66,681,523
33. Balance Before Application of Prepayment Vendor Collections (31 minus 32)	(66,681,523)	0	(66,681,523)
34. Prepayment Vendor Collections Applied to NSA			0
35. Balance Before Conversion (33 plus 34)	(66,681,523)	0	(66,681,523)
36. Conversion:			
a. Food to NSA		0	0
b. NSA to Food		0	0
37. Balance After Conversion (35 plus 36)	(66,681,523)	0	(66,681,523)
38. Current Year Spending Options:			
a. Spendforward to Following Year			0



Transaction Section

Line 29 – Formula Grant

- **Formula Grant must be entered from spreadsheet sent to State Agency from Regional Office**



Transaction Section

Line 30 – Prior Year Spending Options

- **Line 30a – Spend forward from prior year**
- **Line 30b – Back spend to prior year**



Transaction Section

Line 31 – Subtotal

- **Sum of Line 29 and Line 30**

Line 32 – Annual Net Federal Cost

- **Page 2, Line 14**

Line 33 – Balance Before Application of Prepayment Vendor Collections

- **Line 31 minus Line 32**



Transaction Section

Line 34 – Prepayment Vendor Collections Applied To NSA

- **Manual Entry**

Line 35 – Balance Before Conversion

- **Sum of Line 33 and Line 34**

Line 36 – Conversion

- **Manual Entry**



Transaction Section

Line 37 – Balance After Conversion

- **Sum of Line 35 and Line 36**

Line 38a – Spend forward To Following Year

- **Manual Entry**

Line 38b – Back Spend From Following Year

- **Manual Entry**



Page 2 - 798 Report Bottom Section

39. Results of Report Year Program Operations (37 plus 38)	(66,681,523)	0	(66,681,523)
40. Preliminary Recoveries/Cash Transfers			
a. Preliminary Recoveries			0
b. Cash Transfers In (out)			0
c. Total Recoveries/Cash Transfers	0	0	0
41. Federal Funds to be Recovered (Restored) (39 plus 40c)	(66,681,523)	0	(66,681,523)

Explanatory Notes:

42. Funds Spent for Breast Pumps			0
43. Portion of Spendforward to Following Year Attribute to Vendor/Part. Collections			0

Remarks:

Federal Unduplicated Migrant Enrollment = 863



Page 2 - 798 Report Bottom Section

Line 39 – Results Of Report Year Program Operations

- **Sum of Line 37 and Line 38**

Line 40a – Preliminary Recoveries

- **Manual Entry**

Line 40b – Cash Transfers In (Out)

- **Manual Entry**



Page 2 - 798 Report Bottom Section

Line 40c – Total Recoveries/Cash Transfers

- **Sum of Line 40a and Line 40b**

Line 41 – Federal Funds To Be Recovered (Restored)

- **Sum of Line 39 and Line 40c**



Explanatory Notes Section

Line 42 – Funds Spent For Breast Pumps

- **Manual Entry**

Line 43 – Portion Of Spend Forward To Following Year Attribute To Vendor/Participant Collections

- **Manual Entry**



Remarks Section

- **Manual Entry**
- **Migrant Participation**
- **Detail of Prepayment Vendor Collections**
- **Detail of Breastpump Purchases**
- **Any Explanatory Notes**



Page 3 – Actual Outlays

Food 6/16/2011		U.S. DEPARTMENT OF AGRICULTURE - FOOD AND NUTRITION SERVICE											
7.B FOOD OUTLAYS		WIC MONTHLY ACTUAL OUTLAYS WORKSHEET FOR MONTH ENDING SEPTEMBER 2010											
ACTUAL OUTLAYS	OCTOBER	NOVEMBER	DECEMBER	JANUARY	FEBRUARY	MARCH	APRIL	MAY	JUNE	JULY	AUGUST	SEPTEMBER	YTD TOTAL
JULY													0.00
AUGUST	41.28												41.28
SEPTEMBER													0.00
OCTOBER	3,422,365.53	279.87	38.88									7.96	3,422,692.24
NOVEMBER	2,154,795.54	3,173,907.52				5.66	6.45				5.68		5,328,720.85
DECEMBER	42,420.13	2,335,519.89	3,663,836.34										6,041,776.36
JANUARY		15,592.08	1,929,410.24	3,509,888.67									5,454,890.99
FEBRUARY			27,858.00	1,947,996.69	2,778,415.30								4,754,269.99
MARCH		112.64	79.98	70,273.42	2,514,530.21	3,670,552.50							6,255,548.75
APRIL				98.60	9,292.56	1,902,642.13	3,644,812.51						5,556,845.80
MAY				18.07	94.01	13,887.34	1,917,232.71	3,282,352.65					5,213,584.78
JUNE						11.44	37,154.09	2,295,792.92	3,555,967.15				5,888,925.60
JULY							92.16	25,190.14	2,027,177.85	3,627,272.64			5,679,732.79
AUGUST								6.09	20,780.27	1,988,824.20	3,694,081.16		5,703,691.72
SEPTEMBER									54.53	21,511.11	1,905,742.80	3,481,905.51	5,409,213.95
OCTOBER											18,767.03	1,923,522.70	1,942,289.73
NOVEMBER										10.00		29,031.82	29,041.82
DECEMBER											12.57	226.40	238.97
JANUARY												18.41	18.41
FEBRUARY													0.00
MARCH													0.00
APRIL													0.00
MAY													0.00
JUNE													0.00
Subtotal	5,619,622.48	5,525,412.00	5,621,223.44	5,528,275.45	5,302,332.08	5,587,099.07	5,599,297.92	5,603,341.80	5,603,979.80	5,637,617.95	5,618,609.24	5,434,712.80	66,681,524.03
Formula Rebate Total	0.00	0.00	0.00	0.00	0.00	0.00	0.00	0.00	0.00	0.00	0.00	0.00	0.00
7.D TOTAL	5,619,622.48	5,525,412.00	5,621,223.44	5,528,275.45	5,302,332.08	5,587,099.07	5,599,297.92	5,603,341.80	5,603,979.80	5,637,617.95	5,618,609.24	5,434,712.80	66,681,524.03

- **Columns = Report or Participation Months**
- **Rows = Redemption Months**



Actual Outlays Worksheet

7.D Total

- **Paid Obligations as of the most recent bank file**
- **Gross Outlay (Line 4 on Page 1)**
- **Figure in YTD Total Column should equal reconciliation bank total from Solutran used in scheduling Month End run.**



Tab 4 –Formula Rebate Worksheet

7.D Total

- **From Formula Rebates Billed**
 - **Rebate per Unit times Units on the Rebate Invoice (RebateInvoiceItem table)**



Tab 5 –Milk Rebate Worksheet

- **Total**

- **From Milk Rebates Billed (Includes Cheese)**
 - **Rebate per Unit times Units on the Rebate Invoice (RebateInvoiceItem table)**



Tab 6 – Infant Juice Rebate Worksheet

Total

- **From Infant Juice Rebates Billed**
 - **Rebate per Unit times Units on the Rebate Invoice (RebateInvoiceItem table)**



Tab 7 – Infant Cereal Rebate Worksheet

7.D Total

- **From Infant Cereal Rebates Billed**
 - **Rebate per Unit times Units on the Rebate Invoice (RebateInvoiceItem table)**



Tab 8 – Juice Rebate Worksheet

7.D Total

- **From Juice Rebates Billed**
 - **Rebate per Unit times Units on the Rebate Invoice (RebateInvoiceItem table)**



Tab 9 – Cereal Rebate Worksheet

7.D Total

- **From Cereal Rebates Billed**
 - **Rebate per Unit times Units on the Rebate Invoice (RebateInvoiceItem table)**



Bank Exception Table

Bank Exceptions

Month of: 09/2010

Serial #	Paid Date	Exception Reason	Stamp Number	Reapply?
54254860	9/1/2010	Paid without issuance	9943	Y
48567194	9/3/2010	Paid without issuance	9034	Y
49257615	9/3/2010	Paid without issuance	9917	Y
52390585	9/3/2010	Paid without issuance	9917	Y
00030001	9/7/2010	Paid without issuance	2627	Y
52468888	9/7/2010	Paid without issuance	9117	Y
94798570	9/7/2010	Paid without issuance	9276	Y
48612725	9/8/2010	Paid without issuance	2615	Y
48963826	9/8/2010	Paid without issuance	8035	Y
84766578	9/8/2010	Paid without issuance	9734	Y
85478848	9/8/2010	Paid without issuance	9151	Y
85232831	9/9/2010	Paid without issuance	9121	Y
48962546	9/13/2010	Paid without issuance	9572	Y
50785130	9/13/2010	Paid without issuance	2635	Y
04920451	9/14/2010	Paid without issuance	9272	Y
52009214	9/14/2010	Paid without issuance	9539	Y
52316940	9/14/2010	Paid without issuance	9943	Y
57000756	9/14/2010	Paid without issuance	9248	Y

Edit Bank Exception

Serial #
54254860

Exception Reason
Paid without issuance

Payment Amount:

Paid Date:

Stamp Number:

OK Cancel

Edit

Close



One to One Reconciliation Report

FIN022
ADMIN SYSTEM

One to One Reconciliation
Month of October 2008

Run Date: 06/16/2011
Run Time: 1:54:00 PM
Page: 1

Participation month: October 2008

Check Serial #	Paid Amount	Paid Date	Issued Date	Voided Date	Expiration Date	Status
00000105	\$0.00		09/15/2008	09/15/2008	12/14/2008	Voided
00000106	\$0.00		09/15/2008	09/15/2008	12/14/2008	Voided
00000107	\$0.00		09/15/2008	09/15/2008	12/14/2008	Voided
00000114	\$17.29	10/28/2008	09/15/2008		12/14/2008	Validly Redeemed
00000115	\$25.37	10/28/2008	09/15/2008		12/14/2008	Validly Redeemed
00000116	\$9.46	10/28/2008	09/15/2008		12/14/2008	Validly Redeemed
00000123	\$18.40	11/13/2008	09/15/2008		12/14/2008	Validly Redeemed
00000124	\$24.51	11/13/2008	09/15/2008		12/14/2008	Validly Redeemed
00000125	\$0.00		09/15/2008		12/14/2008	Expired
00000128	\$0.00		09/15/2008	09/15/2008	12/14/2008	Voided
00000129	\$0.00		09/15/2008	09/15/2008	12/14/2008	Voided
00000135	\$0.00		09/15/2008	09/15/2008	12/14/2008	Voided
00000136	\$0.00		09/15/2008	09/15/2008	12/14/2008	Voided
00000137	\$0.00		09/15/2008	09/15/2008	12/14/2008	Voided
00000147	\$0.00		09/15/2008	09/15/2008	12/14/2008	Voided
00000148	\$0.00		09/15/2008	09/15/2008	12/14/2008	Voided
00000149	\$0.00		09/15/2008	09/15/2008	12/14/2008	Voided
00000155	\$21.66	10/22/2008	09/15/2008		12/14/2008	Validly Redeemed
00000156	\$24.02	10/22/2008	09/15/2008		12/14/2008	Validly Redeemed
00000162	\$16.15	10/24/2008	09/15/2008		12/14/2008	Validly Redeemed



Functions of the 1 to 1 Report

- **The One to One Reconciliation Report details the individual status of redeemed food instruments and gives a summary of the number of redeemed food instruments per status.**
- **This Report is a point in time report until the month has closed out.**



One to One Reconciliation Report

- **The One to One Reconciliation Report should be generated for the Report Month and the previous 3 months to account for the 120 day close-out timeframe.**
- **Once the Month has closed out the Total Value at the end of the Summary Page should match the Gross Outlays (line 4) on page one of the 798 Report.**



Summary Page for 1 to 1 Report

Number of Checks Issued:	8,868
Count of Still Valid:	28
Count of Lost/Stolen:	0
Count of Voided:	434
Count of Expired:	1,216
Count of Duplicated:	0
TOTAL COUNT UNREDEEMED	1,678
Count of Validly Redeemed:	7,176
Count of Lost/Stolen but still Redeemed:	0
Count of Voided but still Redeemed:	14
Count of Unmatched:	0
TOTAL COUNT OF REDEEMED:	7,190
Total Value of Validly Redeemed:	221,290.16
Total Value of Lost/Stolen still Redeemed:	
Total Value of Voided but still Redeemed:	
250.70	
Total Value of Unmatched:	
TOTAL VALUE:	221,540.86

- **This is the Summary Page of the October One to One Report ran for December.**

There are still a few valid checks remaining.

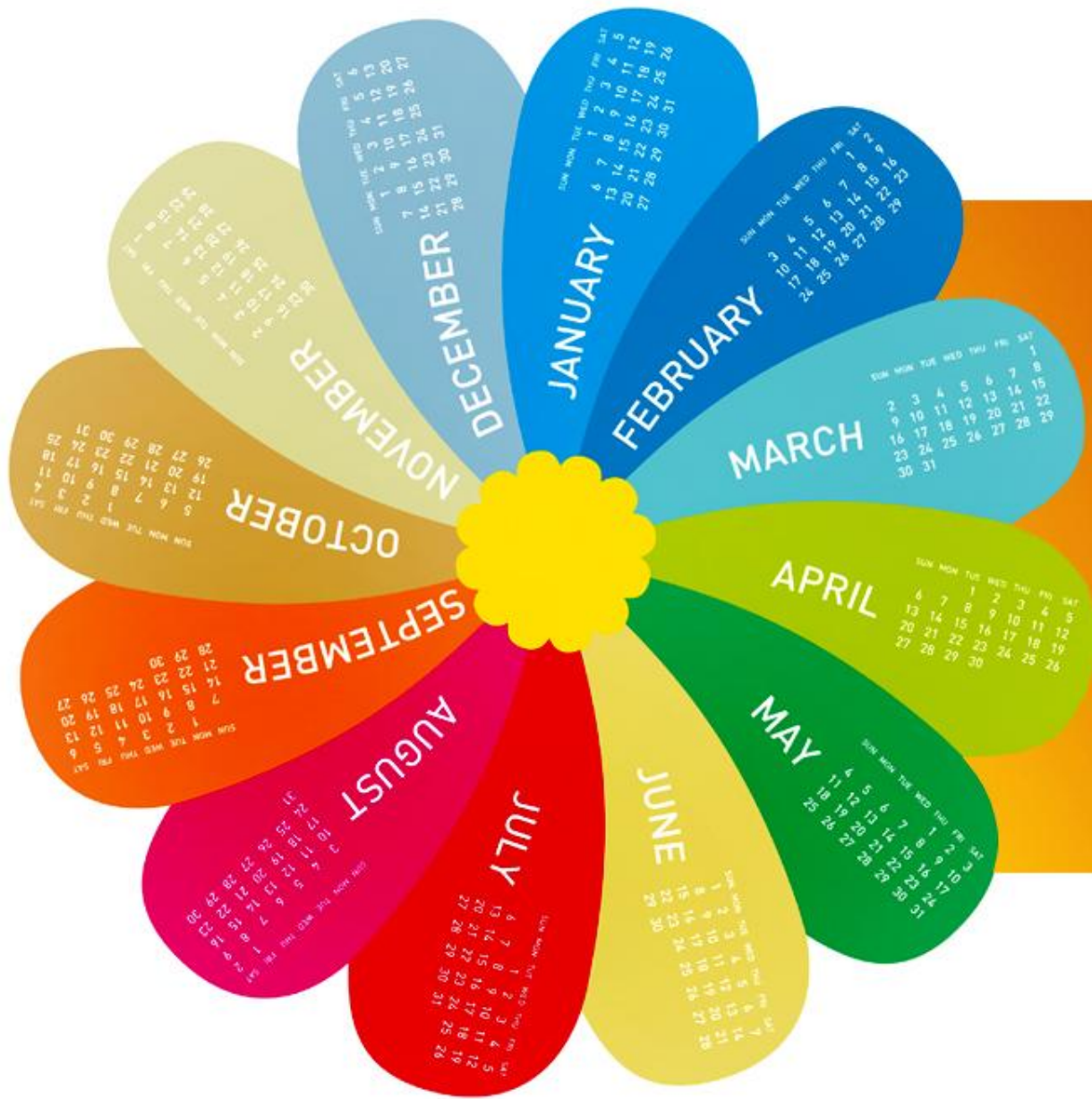


Summary Page – Closed-Out Month

Number of Checks Issued:	8,868
Count of Still Valid:	0
Count of Lost/Stolen:	0
Count of Voided:	434
Count of Expired:	1,242
Count of Duplicated:	0
TOTAL COUNT UNREDEEMED	1,676
Count of Validly Redeemed:	7,178
Count of Lost/Stolen but still Redeemed:	0
Count of Voided but still Redeemed:	14
Count of Unmatched:	0
TOTAL COUNT OF REDEEMED:	7,192
Total Value of Validly Redeemed:	221,339.47
Total Value of Lost/Stolen still Redeemed:	
Total Value of Voided but still Redeemed:	250.70
Total Value of Unmatched:	
TOTAL VALUE:	221,590.17

- **The number of valid checks are zero.**

- **The Total Value should match the Gross Outlays on January 798 Report for the month of October which is closed-out.**



Questions?