



GENERATING THE PC2010 FILE

Contents

1. Setup for the creation of the PC2010 File.....	2
2. Instructions for creating the PC2010 File.....	3

1. Setup for the creation of the PC2010 File

Production Database backups were taken at close of business on April 30, 2010, as required by USDA, for producing the PC2010 file. These backups were stored in a secure location until the point at which the creation of the PC2010 file would start. Release 2.07 is scheduled to be released on July 30, 2010 with fixes to the file format, so the mass creation of the PC2010 file can now begin at all States.

In order to expedite the creation of the PC2010 file, the following steps should be taken:

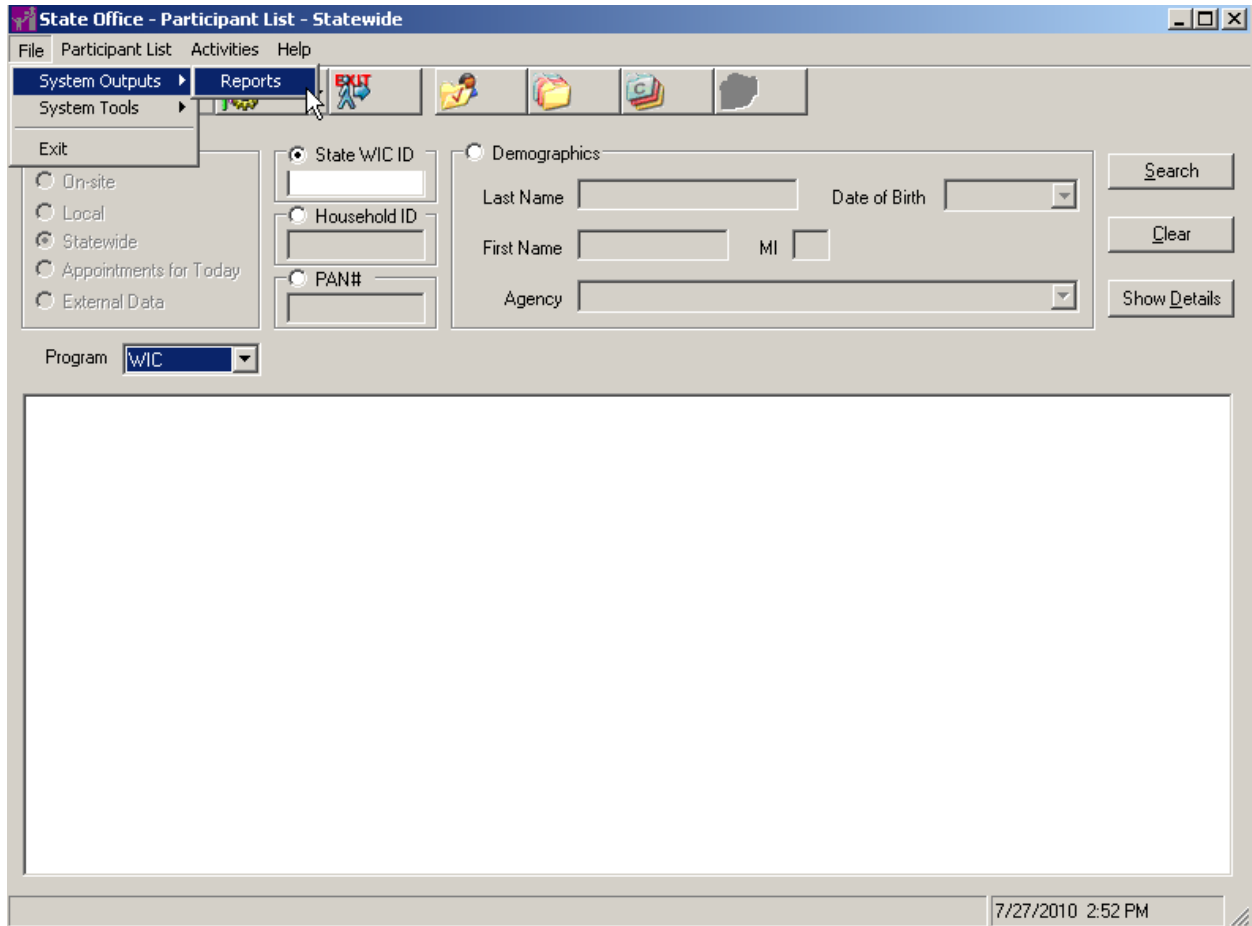
- The April 30, 2010 backups should be restored to your States test database.
- Release 2.07 should be installed in the test environment.
- Review <https://www.sug-spirit.net/browse/ENH-169> as it has an SQL Statement that must be applied to each April 30, 2010 backup prior to creating the PC2010 file. The file will not be created without this SQL.

During this time, absolutely no testing should occur. The only activity that should take place is the creation of the PC2010 file. Instructions for creating the PC2010 file are explained in Section 2 of this document.

Once the PC2010 file is generated, a production backup can be restored to the test environment and regular testing can recommence.

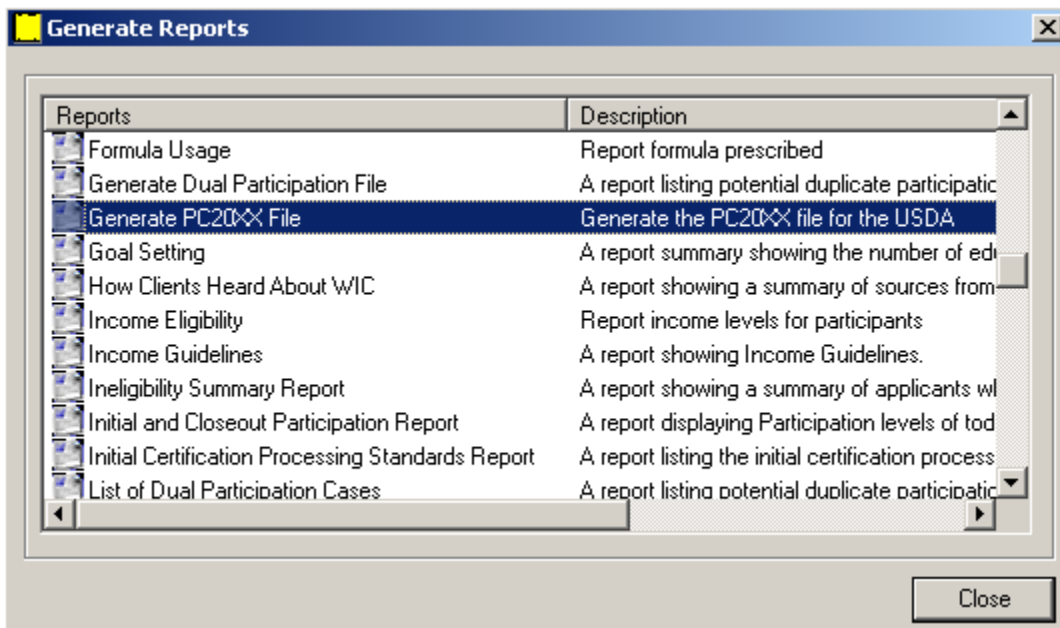
2. Instructions for creating the PC2010 File

In the State Office application, select File -> System Outputs -> Reports.



Generating the PC2010 File

The Generate Reports screen will then appear.



Double Click the *Generate PC20XX File*. The following screen will then appear.

The screenshot shows a dialog box titled "PC20XX File Generation" with a close button in the top right corner. It contains four text input fields labeled "Database Server", "Database Name", "Database User Id", and "Database Password". At the bottom are "OK" and "Cancel" buttons.

Database Server

Database Name

Database User Id

Database Password

OK Cancel

Enter the Database Server in text box

Enter the name of the Database server when the April backup is stored. The Database Server textbox **does not** allow special characters to be entered directly. The workaround for this is to open Notepad and type in the Database Server name. Copy and Paste it into the Database Server text box.

Enter the Database Name in the text box

Enter the name of the Database you are wanting to run the PC2010 file against. For example, WSPCOCN. The Database Name textbox **does not** allow special characters to be entered directly. The workaround for this is to open Notepad and type in the Database Name. Copy and Paste it into the Database Name text box.

Enter the Database User ID in the text box

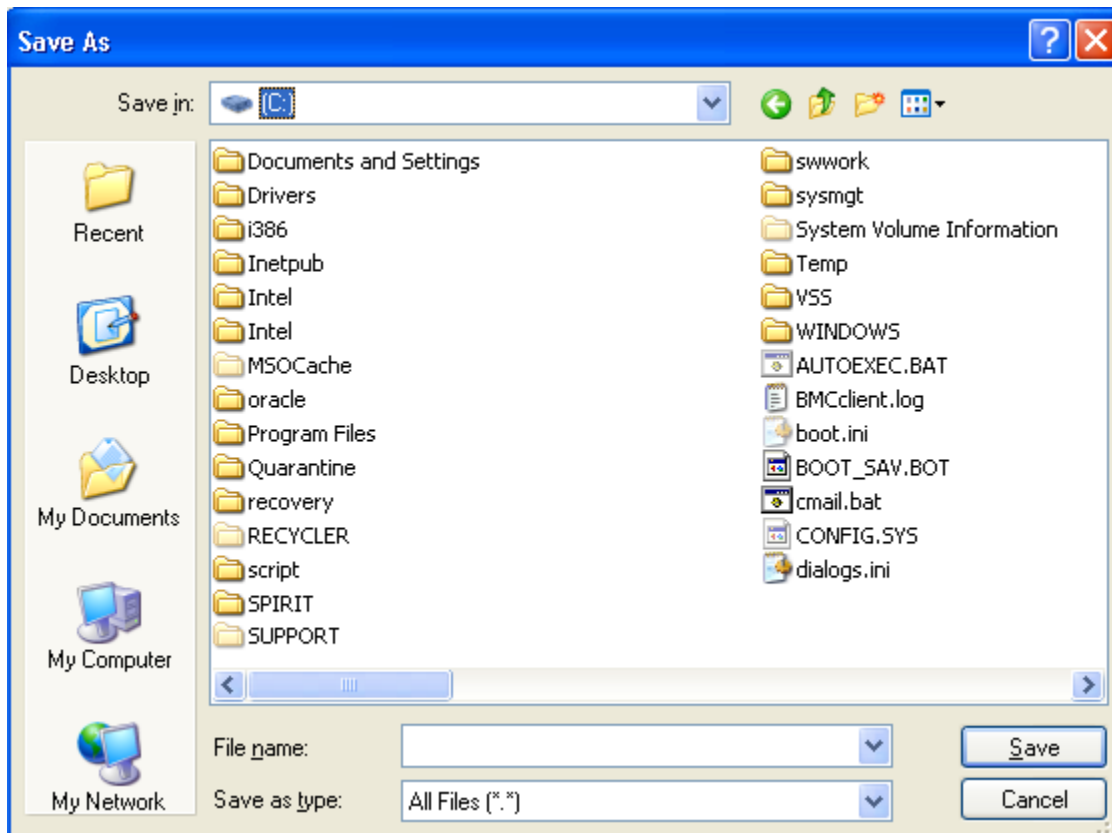
The Database User ID is spirit. All lowercase.

Enter the Database Password in the text box

The Database password is sp1r1t76.

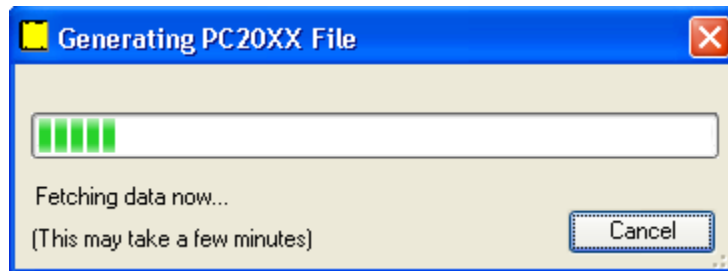
Click OK

You will then be prompted for saving the file in a user specified directory. Please note the file location.



Upon successful completion of the above listed edits, the system displays the Generating PC20XX File dialog and begins the generation of the PC2010 file.

Generating the PC2010 File



The progress bar will indicate the current level of completion for the PC20XX file generation processes. Once the progress bar is filled, the file is completed and can be found in the location you designated.