

10. CASELOAD MANAGEMENT.....2

10.1 CLINIC CASELOAD / AGENCY CASELOAD – ESTIMATED ELIGIBLES TAB2

10.2 CLINIC CASELOAD / AGENCY CASELOAD – HIGH RISK GOAL TAB.....8

10.3 COUNTY/MUNICIPALITY CASELOAD DIALOG.....13

10.4 CALCULATE ESTIMATED ELIGIBLE CASELOAD DIALOG17

10.5 ADD CALCULATED ESTIMATED ELIGIBLE CASELOAD MONTH DIALOG23

10. Caseload Management

The functions described in this chapter will allow the State staff to enter caseload numbers for inclusion in caseload management reports.

10.1 Clinic Caseload / Agency Caseload – Estimated Eligibles Tab

The Estimated Eligibles tab of the Clinic Caseload / Agency Caseload dialog allows the user to enter estimated eligibles data for clinics or agencies, depending on the value of the [CASELOAD BY SERVICESITE](#) state business rule:

- If [CASELOAD BY SERVICESITE](#) = 'Y', the dialog is used to maintain the caseload for clinics.
- If [CASELOAD BY SERVICESITE](#) = 'N', the dialog is used to maintain the caseload for agencies.

The dialog is invoked by the following actions:

- Selecting the Clinic Caseload / Agency Caseload menu item from the Activities menu on the State Office Participant List window.
- Selecting the Clinic Caseload / Agency Caseload toolbar button on the State Office Participant List window.

Clinic	Pregnant	Postpartum	Infants	Children	Total
01 - Clinic WIC Program	0	0	0	0	0
02 - Main Street WIC Program	0	0	0	0	0

Figure 1 – Clinic Caseload – Estimated Eligibles Tab

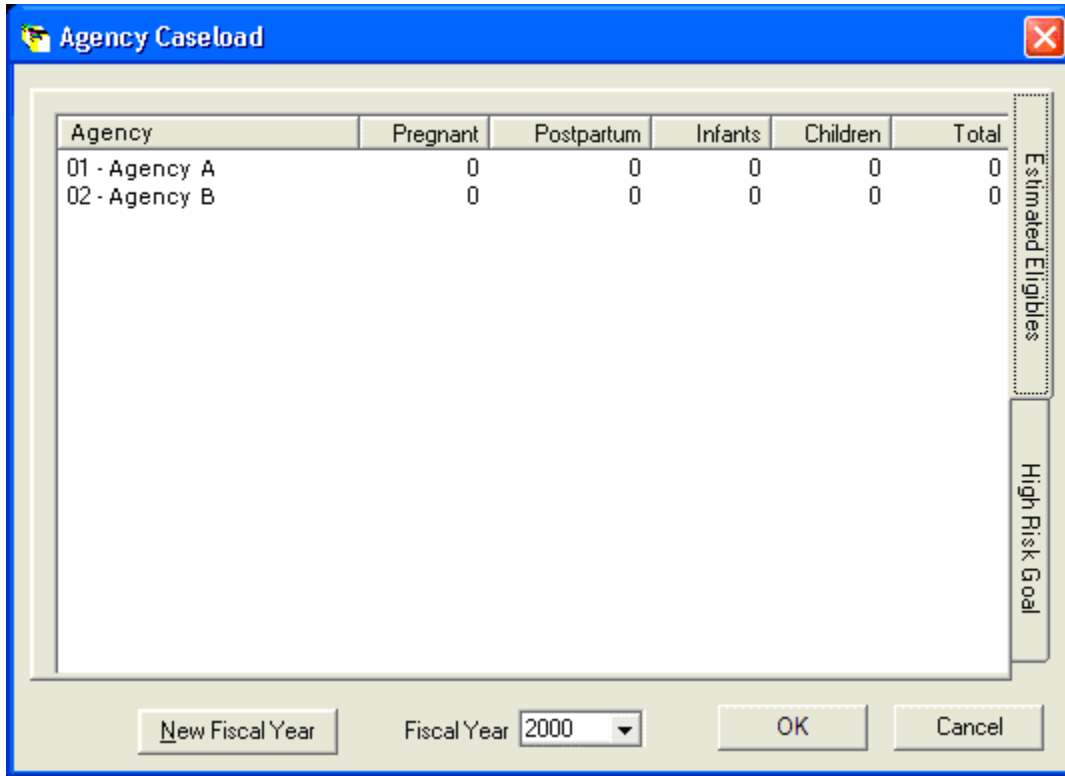


Figure 2 – Agency Caseload – Estimated Eligibles Tab

10.1.1 Controls

This section describes the behavior of the controls on the Estimated Eligibles tab of the Clinic Caseload / Agency Caseload dialog.

10.1.1.1 Estimated Eligibles Data Grid

The control allows the user to enter estimated eligibles data. It is enabled when the dialog is active. The data grid displays either clinics or agencies, depending on the value of the [CASELOAD BY SERVICESITE](#) state business rule:

- If [CASELOAD BY SERVICESITE](#) = 'Y', the data grid displays each clinic in the ServiceSite table along with its estimate from the ClinicEligibles table.
- If [CASELOAD BY SERVICESITE](#) = 'N', the data grid displays each agency in the Agency table along with its estimate from the AgencyEligibles table.

It includes the following columns:

- The first column is determined by the value of the [CASELOAD BY SERVICESITE](#) state business rule and is read-only:

- If CASELOAD BY SERVICESITE = 'Y', the column is, "Clinic".
 - If CASELOAD BY SERVICESITE = 'N', the column is "Agency"
- Pregnant
 - Postpartum
 - Infants
 - Children
 - Total (read-only)

The records in the data grid are sorted in ascending order by Clinic or Agency ID according to the contents of the Clinic or Agency column. Integer values may be entered into the Pregnant, Postpartum, Infants, and Children columns of the rows if the selected Fiscal Year has not been closed. The maximum length allowed for the values is seven (7) characters, and only numeric characters are accepted. No edits are performed on the values entered in the columns. The Total column is calculated for each record from the sum of the Pregnant, Postpartum, Infants, and Children columns. The user can view caseload data from previous fiscal years by selecting that fiscal year.

10.1.1.2 New Fiscal Year Button

The control allows the user to start a new fiscal year for recording caseload. It is enabled when the most current fiscal year is selected in the Fiscal Year drop-down. It has the mnemonic "N".

10.1.1.3 Fiscal Year Drop-down

The control allows the user to specify the fiscal year of caseload data to view or edit. The drop-down is enabled when the dialog is active. The control displays all fiscal years listed in the FISCAL-YEAR table in descending order. The value defaults to the current fiscal year. The user can view caseload data from previous fiscal years by selecting a fiscal year from the drop-down list.

10.1.1.4 OK Button

The control allows the user to save the information on the dialog. It is enabled when the dialog is active. Characteristics for the OK button are defined in the Consistencies chapter.

10.1.1.5 Cancel Button

The control allows the user to cancel the dialog without saving. It is enabled when the dialog is active. Characteristics for the Cancel button are defined in the Consistencies chapter.

10.1.2 Processes

10.1.2.1 *Initializing the Interface*

Upon initialization of the dialog:

- If CASELOAD BY SERVICESITE = 'Y':
 - The title bar text is "Clinic Caseload".
 - The data grid displays a record for each clinic in the ServiceSite table.
- If CASELOAD BY SERVICESITE = 'N':
 - The title bar text is "Agency Caseload".
 - The data grid displays a record for each agency in the Agency table.
- The Fiscal Year displays the current fiscal year

10.1.2.2 *New Fiscal Year*

Upon selection of the New Fiscal Year button:

- A standard error message is displayed with the message text "This process will close the current fiscal year. Updates will no longer be allowed for its estimated caseload information. Do you want to create the next fiscal year?" Yes and No buttons will be enabled. If the Yes button is selected, the system will automatically add the next numeric fiscal year to the FISCAL-YEAR table. If the No button is selected, the system will return to the Estimated Eligibles tab of the Clinic Caseload Dialog.

10.1.2.3 *Edits*

There are no edits defined for this dialog.

10.1.2.4 *Saving the Data*

Upon selection of the OK button:

The system saves the data entered as defined by the data map below.

10.1.2.5 *Cancel*

Upon selection of the Cancel button, the dialog is dismissed without saving the data. The user returns to the State Office window.

10.1.2.6 Data Map

Control Label	Entity	Attribute	Business Rule Applicable
Fiscal Year	CLINICELIGIBLES	FiscalYearID	CASELOAD BY SER VICESITE = 'Y' to enable assigned caseload by Clinic.
	AGENCYELIGIBLES		CASELOAD BY SER VICESITE = 'N' to enable assigned caseload by Agency.
Pregnant	CLINICELIGIBLES	PregnantWomen	CASELOAD BY SER VICESITE = 'Y' to enable assigned caseload by Clinic.
	AGENCYELIGIBLES		CASELOAD BY SER VICESITE = 'N' to enable assigned caseload by Agency.
Postpartum	CLINICELIGIBLES	PostpartumWomen	CASELOAD BY SER VICESITE = 'Y' to enable assigned caseload by Clinic.
	AGENCYELIGIBLES		CASELOAD BY SER VICESITE = 'N' to enable assigned caseload by Agency.
Infants	CLINICELIGIBLES	Infants	CASELOAD BY SER VICESITE = 'Y' to enable assigned caseload by Clinic.
	AGENCYELIGIBLES		CASELOAD BY SER VICESITE = 'N' to enable assigned caseload by Agency.
Children	CLINICELIGIBLES	Children	CASELOAD BY SER VICESITE = 'Y' to enable assigned caseload by Clinic.
	AGENCYELIGIBLES		CASELOAD BY SER VICESITE = 'N' to enable assigned caseload by Agency.

10.2 Clinic Caseload / Agency Caseload – High Risk Goal Tab

The High Risk Goal tab of the Clinic Caseload / Agency Caseload dialog allows the user to specify high-risk goals for clinics or agencies, depending on the value of the [CASELOAD BY SERVICESITE](#) state business rule:

- If [CASELOAD BY SERVICESITE](#) = 'Y', the dialog is used to maintain the high risk goals for clinics.
- If [CASELOAD BY SERVICESITE](#) = 'N', the dialog is used to maintain the high risk goals for agencies.

The dialog is invoked by the following actions:

- Selecting the Clinic Caseload / Agency Caseload menu item from the Activities menu on the State Office Participant List window.
- Selecting the Clinic Caseload / Agency Caseload toolbar button on the State Office Participant List window.

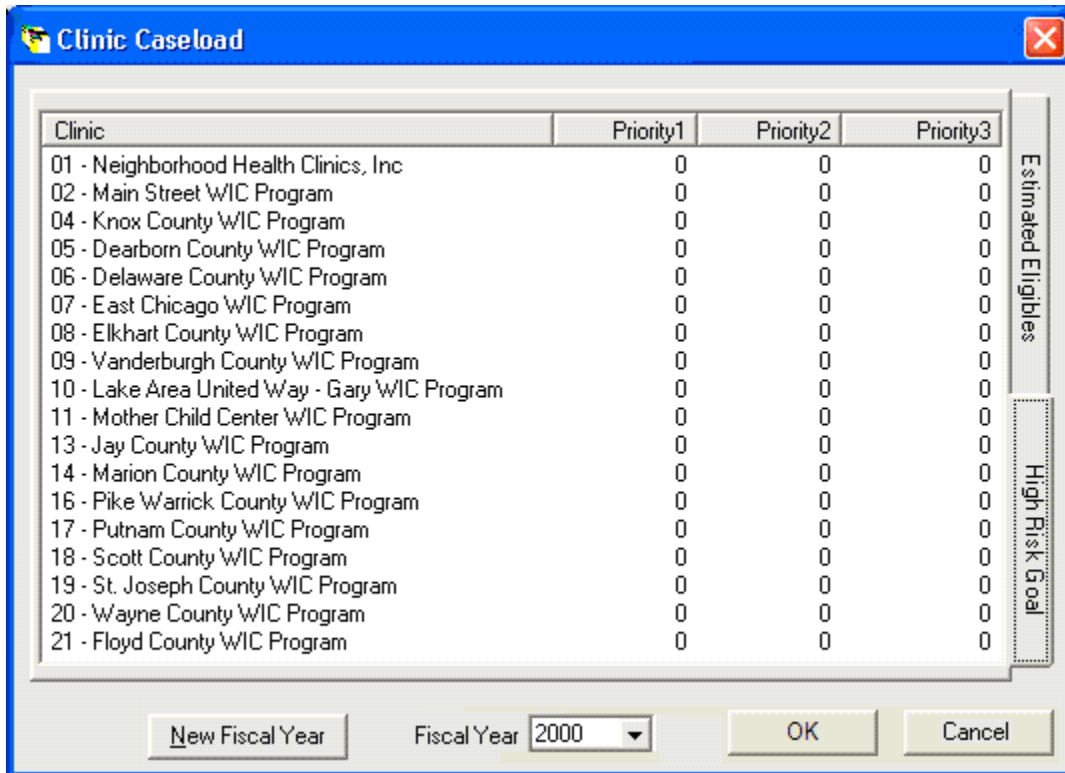


Figure 3 – Clinic Caseload – High Risk Goal Tab

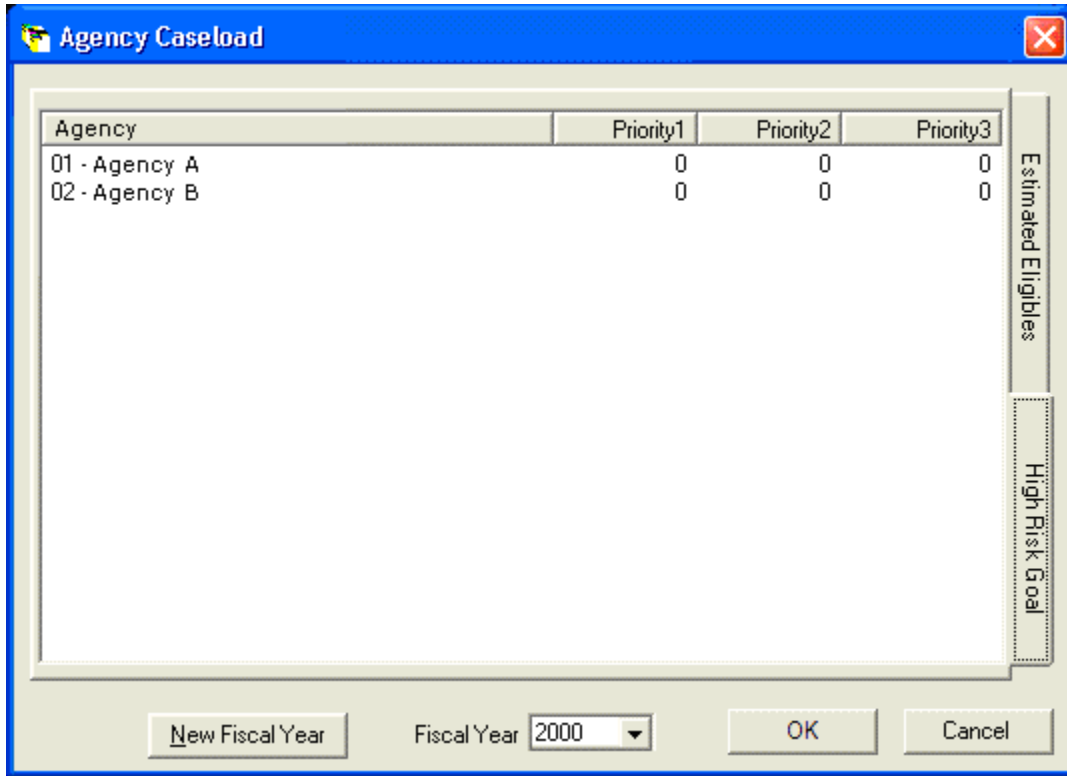


Figure 4 – Agency Caseload – High Risk Goal Tab

10.2.1 Controls

10.2.1.1 High Risk Goals Data Grid

The control allows the user to enter high risk goal data for each clinic. It is enabled when the dialog is active.

The data grid displays either clinics or agencies, depending on the value of the [CASELOAD BY SERVICESITE](#) state business rule:

- If [CASELOAD BY SERVICESITE](#) = 'Y', the data grid displays each clinic in the ServiceSite table.
- If [CASELOAD BY SERVICESITE](#) = 'N', the data grid displays each agency in the Agency table.

It includes the following columns:

- The first column is determined by the value of the [CASELOAD BY SERVICESITE](#) state business rule and is read-only:
 - If [CASELOAD BY SERVICESITE](#) = 'Y', the column is, "Clinic".
 - If [CASELOAD BY SERVICESITE](#) = 'N', the column is "Agency"
- Priority 1

- Priority 2
- Priority 3

The records in the data grid are sorted in ascending order by Clinic or Agency ID according to the contents of the Clinic or Agency column. Integer values may be entered in the Priority 1, Priority 2 and Priority 3 columns of the rows if the selected Fiscal Year has not been closed. The maximum length allowed for the controls is seven (7) characters, and only numeric characters are accepted. No edits are performed on the values entered in these columns. The user can view caseload data from previous fiscal years by selecting that fiscal year.

10.2.1.2 New Fiscal Year Button

The control allows the user to start a new fiscal year for recording caseload. It is enabled when the most current fiscal year is selected in the Fiscal Year drop-down. It has the mnemonic "N".

10.2.1.3 Fiscal Year Drop-down

The control allows the user to specify the fiscal year of caseload data to view or edit. The drop-down is enabled when the dialog is active. The control displays all fiscal years listed in the FISCAL-YEAR table in descending order. The value defaults to the current fiscal year. The user can view caseload data from previous fiscal years by selecting a fiscal year from the drop-down list.

10.2.1.4 OK Button

The control allows the user to save the information on the dialog. It is enabled when the dialog is active. Characteristics for the OK button are defined in the Consistencies chapter.

10.2.1.5 Cancel Button

The control allows the user to cancel the dialog without saving. It is enabled when the dialog is active. Characteristics for the Cancel button are defined in the Consistencies chapter.

10.2.2 Processes

10.2.2.1 Initializing the Interface

Upon initialization of the dialog:

- If [CASELOAD BY SERVICESITE](#) = 'Y':
 - The title bar text is "Clinic Caseload".
 - The data grid displays a record for each clinic in the ServiceSite table.
- If [CASELOAD BY SERVICESITE](#) = 'N':
 - The title bar text is "Agency Caseload".

- The data grid displays a record for each agency in the Agency table.
- The Fiscal Year displays the current fiscal year

10.2.2.2 New Fiscal Year

Upon selection of the New Fiscal Year button:

- A standard error message is displayed with the message text "This process will close the current fiscal year. Updates will no longer be allowed for its estimated caseload information. Do you want to create the next fiscal year?" Yes and No buttons will be enabled. If the Yes button is selected, the system will automatically add the next numeric fiscal year to the FISCAL-YEAR table. If the No button is selected, the system will return to the Estimated Eligibles tab of the Clinic Caseload Dialog.

10.2.2.3 Edits

There are no edits defined for this dialog.

10.2.2.4 Saving the Data

Upon selection of the OK button:

The system saves the data entered as defined by the data map below.

10.2.2.5 Cancel

Upon selection of the Cancel button, the dialog is dismissed without saving the data. The user is returned to the State Office window.

10.2.2.6 Data Map

Control Label	Entity	Attribute	Business Rule Applicable
Fiscal Year	FISCALYEAR	FiscalYearID	
Fiscal Year	CLINICELIGIBLES	FiscalYearID	
Priority1	CLINICELIGIBLES	Priority1	
Priority2	CLINICELIGIBLES	Priority2	
Priority3	CLINICELIGIBLES	Priority3	

10.3 County/Municipality Caseload Dialog

The dialog allows the user to enter estimated eligibles data for counties and legal municipalities within each county. This dialog is accessed from the County/Municipality Caseload menu item on the Activities pull down menu or County/Municipality Caseload toolbar button from the main dialog of the State Office Administrative Application.

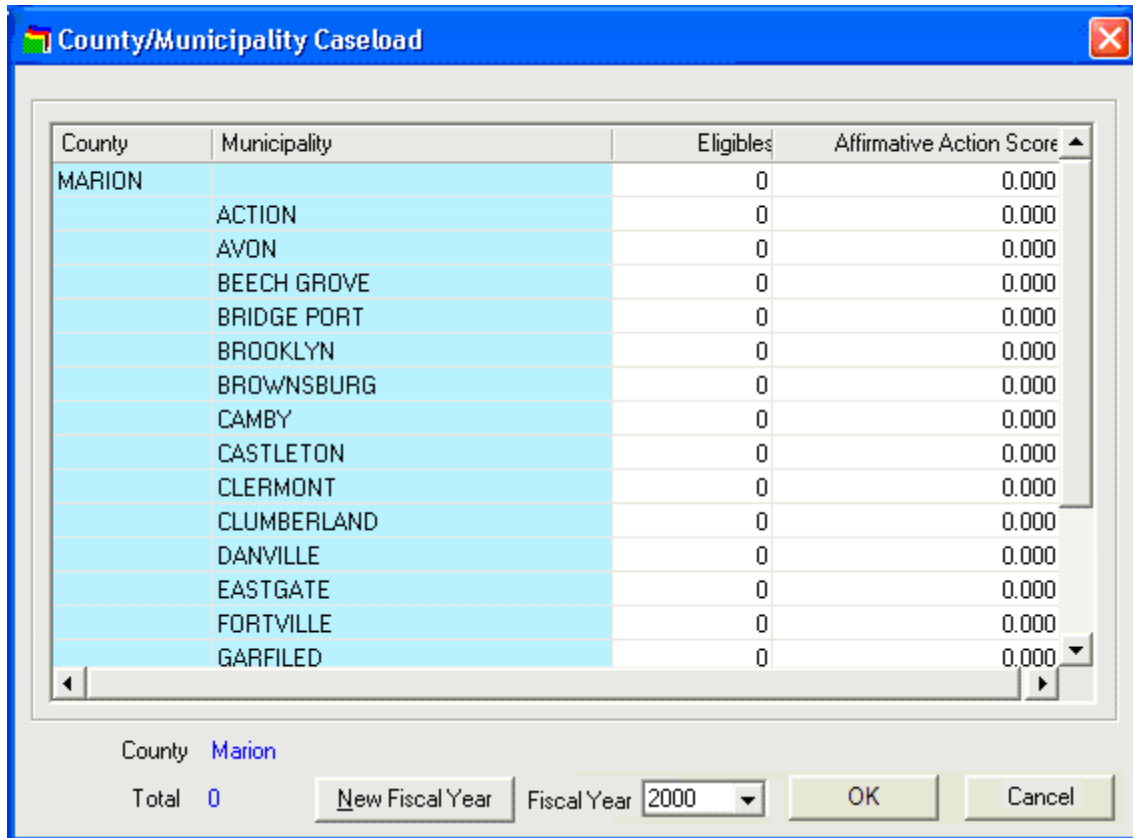


Figure 5 – County/Municipality Caseload Dialog

10.3.1 Controls

This section describes the behavior of the controls on the County/Municipality Caseload Dialog.

10.3.1.1 Estimated Eligibles Data Grid

The control allows the user to enter estimated eligibles data for each clinic in a spreadsheet-style grid. It is enabled when the dialog is active. It includes the following columns:

- County (read-only)
- Municipality (read-only)
- Eligibles
- Affirmative Action Score

A record is displayed in the data grid for each County within the County table and each legal municipality listed within the County. The records of the data grid will sort first by County name in alphabetical ascending order according to the contents of the County column and second by Legal Municipality name within each County in alphabetical ascending order according to the contents of the Legal Municipality column. The estimated values are populated from the CountyEstimated table for the County. The estimated values are populated from the LegalMunicipalityEstimated table for the municipality. Integer values may be entered in the Eligibles columns. The maximum size of the Eligibles control will be seven (7). The control will allow numeric only. The mask for the Affirmative Action Score control will be "(+/-)###.###". The maximum size of the control will be six (6). The control will allow numeric only and decimal. The rows in the Eligibles and Affirmative Action Score columns is enabled for editing if the Fiscal Year has not been closed. If the Fiscal Year has not been closed, the rows in the Eligibles and Affirmative Action Score columns will be view-only.

10.3.1.2 County Value Label

The control allows the user to determine which County is selected on the Estimated Eligibles Data Grid. The value label will contain the name of the County selected in the Estimated Eligibles Data Grid. The name of the County will change upon change of record in the Estimated Eligibles Data grid. The value is displayed in the inverse color of the form.

10.3.1.3 County Totals Value Label (Total)

The control allows the user to view the total estimated eligibles for the County currently selected on the Estimated Eligibles Data Grid. The value for the control will be calculated from the sum of the Legal Municipalities within the selected County from the amount entered in the Eligibles column in the Estimated Eligibles Data Grid. The value is displayed in the inverse color of the form.

10.3.1.4 New Fiscal Year Button

The control allows the user to start a new fiscal year for recording caseload. It is enabled when the most current fiscal year is selected in the Fiscal Year drop-down. It has the mnemonic "N".

10.3.1.5 Fiscal Year Drop-down

The control allows the user to specify the fiscal year of caseload data to view or edit. The drop-down is enabled when the County/Municipality Caseload dialog is active. It is filled with a list of available fiscal years from the FISCAL-YEAR table. The value defaults to the current fiscal year. The user can view caseload data from previous fiscal years by selecting that fiscal year.

10.3.1.6 OK Button

The control allows the user to save the information on the County/Municipality Caseload Dialog. It is enabled when the dialog is active. Characteristics for the OK button are defined in the Consistencies chapter.

10.3.1.7 Cancel Button

The control allows the user to cancel the County/Municipality Caseload dialog without saving. It is enabled when the dialog is active. Characteristics for the Cancel button are defined in the Consistencies chapter.

10.3.2 Processing

10.3.2.1 Initializing the Interface

Upon initial presentation of the window:

- The title bar text is "County/Municipality Caseload"
- All fields display previously saved values as defined in the Data Map for this dialog

10.3.2.2 New Fiscal Year

Upon selection of the New Fiscal Year button

- The system will invoke a standard error message with the text "This process will close the current fiscal year. Updates will no longer be allowed for its estimated caseload information. Do you want to create the next fiscal year? Yes and No buttons will be enabled. If the Yes button is selection, the system will automatically add the next numeric fiscal year to the FISCAL – YEAR table. If the No button is selected, the system will return to the County/Municipality Caseload dialog.

10.3.2.3 Edits

There are no edits defined for this dialog.

10.3.2.4 Saving the Data

Upon selection of the OK button:

The system saves the data entered as defined by the data map below.

10.3.2.5 Cancel

Upon selection of the Cancel button, the dialog will be dismissed without saving the data. The user will be returned to the State Office window.

10.3.2.6 Data Map

Control Label	Entity	Attribute	Business Rule Applicable
FISCAL YEAR	COUNTYESTIMATED	Fiscal Year ID	
COUNTY	COUNTYESTIMATED	County	
ELIGIBLES	COUNTYESTIMATED	BalanceEstimatedEligibles	
AFFIRMATIVE ACTION SCORE	COUNTYESTIMATED	AffirmativeActionScore	
FISCAL YEAR	LEGALMUNICIPALITYESTINATED	Fiscal Year ID	
MUNICIPALITY	LEGALMUNICIPALITYESTINATED	Sub-set list of LocalMunicipality within County	
ELIGIBLES	LEGALMUNICIPALITYESTINATED	BalanceEstimatedEligibles	
AFFIRMATIVE ACTION SCORE	LEGALMUNICIPALITYESTINATED	AffirmativeActionScore	

10.4 Calculate Estimated Eligible Caseload Dialog

The dialog allows the user to enter estimated eligible numbers from external agencies for each county to derive a number of possible eligible people available to be served by this WIC department. This dialog is accessed from the Calculate Estimated Eligible Caseload menu item on the Activities pull down menu from the main dialog of the State Office Administrative Application.

County	Census	State Pgm	Other Tribes	State Agency	Un-served	Percent of Cens
Allen	100	40	60	0	0	0%
Bates	1,000	600	100	100	200	20%
Cass	100,000	70,000	15,000	10,000	5,000	5%

Figure 6 – Calculate Estimated Eligible Caseload Dialog

10.4.1 Controls

This section describes the behavior of the controls on the Calculate Estimated Eligible Caseload Dialog.

10.4.1.1 Clinic Drop-down List

The control allows the user to select a specific clinic to display data in the data grid. It is enabled when the Calculate Estimated Eligible Caseload dialog is active. It will be filled with the ServiceSiteID and ServiceSiteName for all clinics in the ServiceSite table sorted by ServiceSiteID. It defaults to blank.

10.4.1.2 Calculate Estimated Eligible Caseload Data Grid

The control allows the user to enter estimated eligible population data for each clinic in a spreadsheet-style grid. It is enabled when the dialog is active. It includes the following columns:

- County (read-only)
- Census Eligible
- State Pgm Eligible
- Other Tribe Eligible
- State Agency Eligible
- Total Un-served Eligible (read-only) – This value is calculated: (Census Eligible minus State Pgm Eligible minus Other Tribe Eligible minus State Agency Eligible)
- Total Un-served Percent (read-only) – This value is calculated: (Total Un-served Eligible divided by Census Eligible)

Upon selection of a clinic in the clinic drop-down control, the data grid will be cleared and a row will be placed in the data grid for each County within the County table for the selected Clinic in the clinic drop-down. Data from the ELIGIBLEESTIMATE table will be placed in the data grid with each county row for the selected clinic and month. The rows of the data grid will sort first by County name column in alphabetical ascending order. Integer values may be entered in the Eligible columns. The maximum size of the Eligible columns will be nine (9). The control will allow numeric only. The mask for the Eligible columns will be "###,###,###". The maximum size of the Percent column will be six (5). The mask for the Percent column will be "###.##%". The entry columns is enabled for editing if the Fiscal Year has not been closed. If the Fiscal Year has been closed, the entry columns will be view-only.

10.4.1.3 New Month of Button

The control allows the user to add a new month/year for recording calculated estimated eligible caseload. It is enabled when the Calculate Estimated Eligible Caseload dialog is active. It has the mnemonic "N".

10.4.1.4 Month of Drop-down Box

The control allows the user to select the month of calculated estimated eligible data to view or edit. The drop-down box is enabled when the Calculate Estimated Eligible Caseload dialog is active. It will be a read-only drop-down list.

Upon selection of a clinic, it will be filled with a list of available eligible dates (ESTIMATEDT) from the ELIGIBLEESTIMATE table in descending chronological (CCYYMM) order by accounting period for the clinic in the clinic drop-down control. The display format will be MM/CCYY. The value defaults to the most recent date for the selected clinic. It defaults to empty upon initial display when no clinic is selected. The user can view caseload data for other months by selecting a month.

10.4.1.5 OK Button

The control allows the user to save the information on the Calculate Estimated Eligible Caseload Dialog. It is enabled when the dialog is active. Characteristics for the OK button are defined in the Consistencies chapter.

10.4.1.6 Cancel Button

The control allows the user to cancel the Calculate Estimated Eligible Caseload dialog without saving. It is enabled when the dialog is active. Characteristics for the Cancel button are defined in the Consistencies chapter.

10.4.2 Processing

10.4.2.1 Initializing the Interface

Upon initial presentation of the window:

- The title bar text is "Calculate Estimated Eligible Caseload"
- All fields display previously saved values as defined in the Data Map for this dialog

10.4.2.2 New Month

Upon selection of the New Month of button

- Upon the selection of the New Month Button, the system will present the Add Calculate Eligible Caseload Month dialog.
- Upon return from adding a new accounting month (YYYYMM), the new calculate eligible caseload month will be added to the Month drop-down control and selected. The data grid will be cleared and refreshed.

10.4.2.3 Edits

There are no edits defined for this dialog.

10.4.2.4 Saving the Data

Upon selection of the OK button:

The system saves the data entered as defined by the data map below.

10.4.2.5 Cancel

Upon selection of the Cancel button, the dialog will be dismissed without saving the data. The user will be returned to the State Office window.

10.4.2.6 Data Map

Control Label	Entity	Attribute	Business Rule Applicable
---------------	--------	-----------	--------------------------

Clinic	ELIGIBLEESTIMATE	SERVICESITEID – An assigned code identifying the service site within the agency.	
County	ELIGIBLEESTIMATE	County – A state-assigned identifying code for the county of the service site location.	
Month of	ELIGIBLEESTIMATE	ESTIMATEDT – The accounting month/year the estimated un-served eligible population was calculated. YYYYMM Varchar 6	
State Census Eligible	ELIGIBLEESTIMATE	CENSUSELIGIBLE – The total number of eligible population taken from the external state census reporting.	
State Program Eligible	ELIGIBLEESTIMATE	STATEPGMELIGIBLE – The total number of eligible population taken from the external State WIC program (OK, NM) reporting.	
Other Tribes Programs Eligible	ELIGIBLEESTIMATE	OTHERTRIBESSELIGIBLE – The total number of eligible population taken from the other external tribes programs reporting within the state (OK, NM).	
State Agency Eligible	ELIGIBLEESTIMATE	STATEAGENCYELIGIBLE – The total number of eligible population taken from the State Agency program reporting.	
Total Estimated Un-served Eligible	ELIGIBLEESTIMATE	ESTIMATEDUNSERVEDELIBIBLE – The calculated balance of the eligible population estimated un-served.	
Percent Un-served	ELIGIBLEESTIMATE	ESTIMATEDUNSERVEDPERCENT – The calculated percent of the balance of the eligible population estimated un-	

		served to the State Census reporting.	
--	--	--	--

10.5 Add Calculated Estimated Eligible Caseload Month Dialog

The dialog allows the user to add a new month to the calculated estimated eligible caseload table for each county and clinic combination. This dialog is accessed from the New Month of button on the Calculate Estimated Eligible Caseload Dialog.

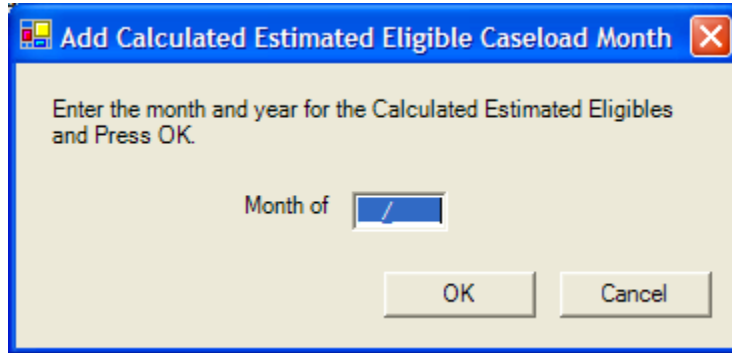


Figure 7 – Calculate Estimated Eligible Caseload Dialog

10.5.1 Controls

This section describes the behavior of the controls on the Add Calculated Estimated Eligible Caseload Month Dialog.

10.5.1.1 Month of Text Box

The control allows the user to enter a Month and Year. It is enabled when the Add Calculated Estimated Eligible Caseload Month dialog is active. It defaults to blank.

The maximum size will be six (6). The control will allow numeric only and a "/". The mask will be "MM/CCYY".

10.5.1.2 OK Button

The control allows the user to save the information on the Add Calculated Estimated Eligible Caseload Month Dialog. It is enabled when the dialog is active. Characteristics for the OK button are defined in the Consistencies chapter.

10.5.1.3 Cancel Button

The control allows the user to close the Dialog. It is enabled when the dialog is active. Characteristics for the Cancel button are defined in the Consistencies chapter.

10.5.2 Processing

10.5.2.1 Initializing the Interface

Upon initial presentation of the window:

- The title bar text is "Add Calculate Estimated Eligible Caseload Month".

10.5.2.2 Edits

Upon selection of the OK button

- If the Month of Date is not entered, the system will present a critical error message that states, "An entry is required for the {control label}."
- If the user types an invalid Date the system will present a critical error message that states, "Invalid date entered."
- If the date falls with a fiscal year that is closed, the system will present a critical error that states, "{control label} is in a closed fiscal year."
- If the date is more than 18 months greater than today the system will present a warning that states, "{control label} is greater than today. Do you wish to continue?"
- If the date is prior to today the system will present a warning that states, "{control label} is prior to today. Do you wish to continue?" Yes and No buttons will be enabled. Upon selecting Yes, the data on the Add Calculate Estimated Eligible Caseload Month of dialog will be saved to the database. Upon selecting No, the data is not saved.

10.5.2.3 Saving the Data

Upon completion of the above listed edits, the system will add a record to the ELIGIBLEESTIMATE table for each clinic and county combination from the ServiceSite table where this date does not yet exist as defined in the data map below. The eligible and percent values in every record added for all clinic and county combinations will contain zeros.

10.5.2.4 Cancel

Upon selection of the Cancel button, the data will not be saved and the user will be returned to the calling dialog.

10.5.2.5 Data Map

Control Label	Entity	Attribute	Business Rule Applicable
Clinic	ELIGIBLEESTIMATE	SERVICESTEID – An assigned code identifying the service site within the agency. Taken from the ServiceSite table.	
County	ELIGIBLEESTIMATE	County – A state-assigned identifying code for the county of	

		the service site location. Taken from the ServiceSite table.	
Month of	ELIGIBLEESTIMATE	ESTIMATEDT – The accounting month/year entered in the Month of control on the dialog.	
State Census Eligible	ELIGIBLEESTIMATE	CENSUSELIGIBLE – Zero filled.	
State Program Eligible	ELIGIBLEESTIMATE	STATEPGMELIGIBLE – Zero filled.	
Other Tribes Programs Eligible	ELIGIBLEESTIMATE	OTHERTRIBESELIGIB LE – Zero filled.	
State Agency Eligible	ELIGIBLEESTIMATE	STATEAGENCYELIGI BLE – Zero filled.	
Total Estimated Un- served Eligible	ELIGIBLEESTIMATE	ESTIMATEDUNSERV EDELIBIBLE – Zero filled.	
Percent Un-served	ELIGIBLEESTIMATE	ESTIMATEDUNSERV EDPERCENT – Zero filled.	