

13. SYSTEM OUTPUTS.....2

13.1 GENERATE REPORTS DIALOG2

13.2 GENERATE LABELS DIALOG9

13.3 GENERATE DOCUMENTS DIALOG11

13. System Outputs

This functionality of the Clinic application allows the user to generate reports, address labels, documents, and blank forms on demand. These system outputs are printed on the Other Output Printer defined for the workstation.

13.1 Generate Reports Dialog

The Generate Reports dialog allows the user to select which report to generate. This dialog can be accessed from the System Outputs toolbar button.

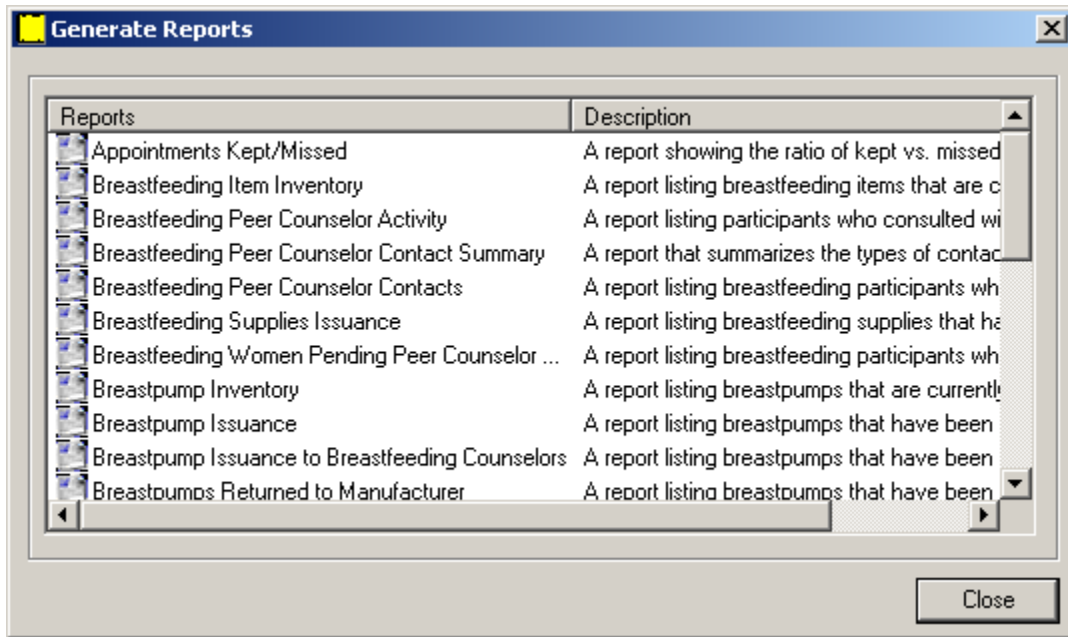


Figure 1 - Generate Reports Dialog

13.1.1 Controls

This section describes the behavior of the controls on the dialog.

13.1.1.1 Reports Display List

This control allows the user to view the list of available reports. The display list will be enabled when the dialog is active. It will display entries for all available reports that can be generated. Each entry displays as a small icon and a text label that displays to the right of the icon in the Reports column. Additional information is displayed for each entry in the Description column. The entries are arranged vertically, each on its own line, in ascending alphabetical order. There are no options for re-sorting the list. The user can make a single selection. Double-clicking a list item will invoke the generate panel for the selected report.

13.1.1.1.1 Generate Appointments Kept/Missed Report

The list item will be enabled when the dialog is active. It does not have a mnemonic or a caption. Upon selection of the list item, the system will invoke the Generate Kept vs. Missed Appointments Report dialog defined in [System Outputs Chapter 01 – System Outputs](#).

13.1.1.1.2 Generate Breastfeeding Item Inventory Report

The list item will be enabled when the dialog is active. It does not have a mnemonic or a caption. Upon selection of the list item, the system will invoke the Generate Breastfeeding Item Inventory Report dialog defined in [System Outputs Chapter 01 – System Outputs](#).

13.1.1.1.3 Generate Breastfeeding Peer Counselor Activity Report

The list item will be enabled when the dialog is active. It does not have a mnemonic or a caption. Upon selection of the list item, the system will invoke the Generate Breastfeeding Peer Counselor Activity Report dialog defined in [System Outputs Chapter 01 – System Outputs](#).

13.1.1.1.4 Generate Breastfeeding Peer Counselor Contact Summary Report

The list item will be enabled when the dialog is active. It does not have a mnemonic or a caption. Upon selection of the list item, the system will invoke the Generate Breastfeeding Peer Counselor Contact(s) Summary dialog defined in [System Outputs Chapter 01 – System Outputs](#).

13.1.1.1.5 Generate Breastfeeding Peer Counselor Contacts Report

The list item will be enabled when the dialog is active. It does not have a mnemonic or a caption. Upon selection of the list item, the system will invoke the Generate Breastfeeding Peer Counselor Contacts Report dialog defined in [System Outputs Chapter 01 – System Outputs](#).

13.1.1.1.6 Generate Breastfeeding Supplies Issuance Report

The list item will be enabled when the dialog is active. It does not have a mnemonic or a caption. Upon selection of the list item, the system will invoke the Generate Breastfeeding Supplies Issuance Report dialog defined in [System Outputs Chapter 01 – System Outputs](#).

13.1.1.1.7 Generate Breastfeeding Women Peer Counselor Contacts Report

The list item will be enabled when the dialog is active. It does not have a mnemonic or a caption. Upon selection of the list item, the system will invoke the Generate Breastfeeding Women Peer Counselor Contacts Report dialog defined in [System Outputs Chapter 01 – System Outputs](#).

13.1.1.1.8 Generate Breastfeeding Women Pending Peer Counselor Contact Report

The list item will be enabled when the dialog is active. It does not have a mnemonic or a caption. Upon selection of the list item, the system will invoke the Generate Breastfeeding Women Pending Peer Counselor Contact Report dialog defined in [System Outputs Chapter 01 – System Outputs](#).

13.1.1.1.9 Generate Breastpump Inventory Report

The list item will be enabled when the dialog is active. It does not have a mnemonic or a caption. Upon selection of the list item, the system will invoke the Generate Breastpump Inventory Report dialog defined in [System Outputs Chapter 01 – System Outputs](#).

13.1.1.1.10 Generate Breastpump Issuance Report

The list item will be enabled when the dialog is active. It does not have a mnemonic or a caption. Upon selection of the list item, the system will invoke the Generate Breastpump Issuance Report dialog defined in [System Outputs Chapter 01 – System Outputs](#).

13.1.1.1.11 Generate Breastpump Issuance to Breastfeeding Counselors Report

The list item will be enabled when the dialog is active. It does not have a mnemonic or a caption. Upon selection of the list item, the system will invoke the Generate Breastpump Issuance to Breastfeeding Counselors Report dialog defined in [System Outputs Chapter 01 – System Outputs](#).

13.1.1.1.12 Generate Breastpumps Returned to Manufacturer Report

The list item will be enabled when the dialog is active. It does not have a mnemonic or a caption. Upon selection of the list item, the system will invoke the Generate Breastpumps Returned to Manufacturer Report dialog defined in [System Outputs Chapter 01 – System Outputs](#).

13.1.1.1.13 Generate Certification Due Summary Report

The list item will be enabled when the dialog is active. It does not have a mnemonic or a caption. Upon selection of the list item, the system will invoke the Generate Certification Due Summary Report dialog defined in [System Outputs Chapter 01 – System Outputs](#).

13.1.1.1.14 Generate Check Pickup Report

The list item will be enabled when the dialog is active. It does not have a mnemonic or a caption. Upon selection of the list item, the system will invoke the Generate Check Pickup Report/Letters dialog defined in [System Outputs Chapter 01 – System Outputs](#).

13.1.1.1.15 Generate Class Attendance Report

The list item will be enabled when the dialog is active. It does not have a mnemonic or a caption. Upon selection of the list item, the system will invoke the Generate Class Attendance Report dialog defined in [System Outputs Chapter 01 – System Outputs](#).

13.1.1.1.16 Generate Client Summary by Service Type Report

The list item will be enabled when the dialog is active. It does not have a mnemonic or a caption. Upon selection of the list item, the system will invoke the Generate Client Summary by Service Type Report dialog defined in [System Outputs Chapter 01 – System Outputs](#).

13.1.1.1.17 Generate Delayed Blood Work Report

The list item will be enabled when the dialog is active. It does not have a mnemonic or a caption. Upon selection of the list item, the system will invoke the Generate Delayed Blood Work Detail Report dialog defined in [System Outputs Chapter 01 – System Outputs](#).

13.1.1.1.18 Generate Group Class Roster Report

The list item will be enabled when the dialog is active. It does not have a mnemonic or a caption. Upon selection of the list item, the system will invoke the Generate Group Class Roster Report dialog defined in [System Outputs Chapter 01 – System Outputs](#).

13.1.1.1.19 Generate Initial Certification Process Report

The list item will be enabled when the dialog is active. It does not have a mnemonic or a caption. Upon selection of the list item, the system will invoke the Generate Initial Certification Process Report dialog defined in [System Outputs Chapter 01 – System Outputs](#).

13.1.1.1.20 Generate No Show Report

The list item will be enabled when the dialog is active. It does not have a mnemonic or a caption. Upon selection of the list item, the system will invoke the Generate No Show Report dialog defined in [System Outputs Chapter 01 – System Outputs](#).

13.1.1.1.21 Generate Participation vs. Enrollment Monthly Report

The list item will be enabled when the dialog is active and the AllowGeneratePaxVsEnrollmentMonthlyRptInClinic business rule is set to “Y”. It does not have a mnemonic or a caption. Upon selection of the list item, the system will invoke the Participation vs. Enrollment Monthly dialog defined in [System Outputs Chapter 01 – System Outputs](#).

13.1.1.1.22 Generate Peer Counselor Breastfeeding Contact Report

The list item will be enabled when the dialog is active. It does not have a mnemonic or a caption. Upon selection of the list item, the system will invoke the Generate Peer Counselor Breastfeeding Contact List Report dialog defined in [System Outputs Chapter 01 – System Outputs](#).

13.1.1.1.23 Generate Peer Counselor Prenatal Contact Report

The list item will be enabled when the dialog is active. It does not have a mnemonic or a caption. Upon selection of the list item, the system will invoke the Generate Peer Counselor Prenatal Contact List Report dialog defined in [System Outputs Chapter 01 – System Outputs](#).

13.1.1.1.24 Generate Pending Certifications Report

The list item will be enabled when the dialog is active. It does not have a mnemonic or a caption. Upon selection of the list item, the system will invoke the Generate Pending Certifications Report dialog defined in [System Outputs Chapter 01 – System Outputs](#).

13.1.1.1.25 Generate Prenatals Pending Peer Counselor Contact Report

The list item will be enabled when the dialog is active. It does not have a mnemonic or a caption. Upon selection of the list item, the system will invoke the Generate Prenatals Pending Peer Counselor Contact Report dialog defined in [System Outputs Chapter 01 – System Outputs](#).

13.1.1.1.26 Generate Referrals Report

The list item will be enabled when the dialog is active. It does not have a mnemonic or a caption. Upon selection of the list item, the system will invoke the Generate Referrals Report dialog defined in [System Outputs Chapter 01 – System Outputs](#).

13.1.1.1.27 Generate Special Formula Prescription Expiration Date Report

The list item will be enabled when the dialog is active. It does not have a mnemonic or a caption. Upon selection of the list item, the system will invoke the Generate Special Formula Rx Expiration Date dialog defined in [System Outputs Chapter 01 – System Outputs](#).

13.1.1.1.28 Generate Upcoming Appointments Report

The list item will be enabled when the dialog is active. It does not have a mnemonic or a caption. Upon selection of the list item, the system will invoke the Generate Upcoming Appointments Report dialog defined in [System Outputs Chapter 01 – System Outputs](#).

13.1.1.1.29 Generate Upcoming High Risk Appointments Report

The list item will be enabled when the dialog is active. It does not have a mnemonic or a caption. Upon selection of the list item, the system will invoke the Generate Upcoming High Risk Appointments Report dialog defined in [System Outputs Chapter 01 – System Outputs](#).

13.1.1.2 Close Button

This control allows the user to exit the Generate Reports dialog. The Close button will be enabled when the Generate Reports dialog is active. Characteristics for the Close button are defined in [Consistencies](#).

13.1.2 Processes

This section describes the processes (navigation) that take place as a result of the actions taken on the dialog.

13.1.2.1 Initializing the Interface

Upon initial presentation of the dialog, the following occurs:

- The title bar text will be set to “Generate Reports”.
- The Reports display list will be initially have no default selection.

13.2 Generate Labels Dialog

The Generate Labels dialog allows the user to select which type of address labels to generate. It is invoked when the user selects the Labels sub-menu item from the System Outputs menu located on the Participant List dialog File menu.

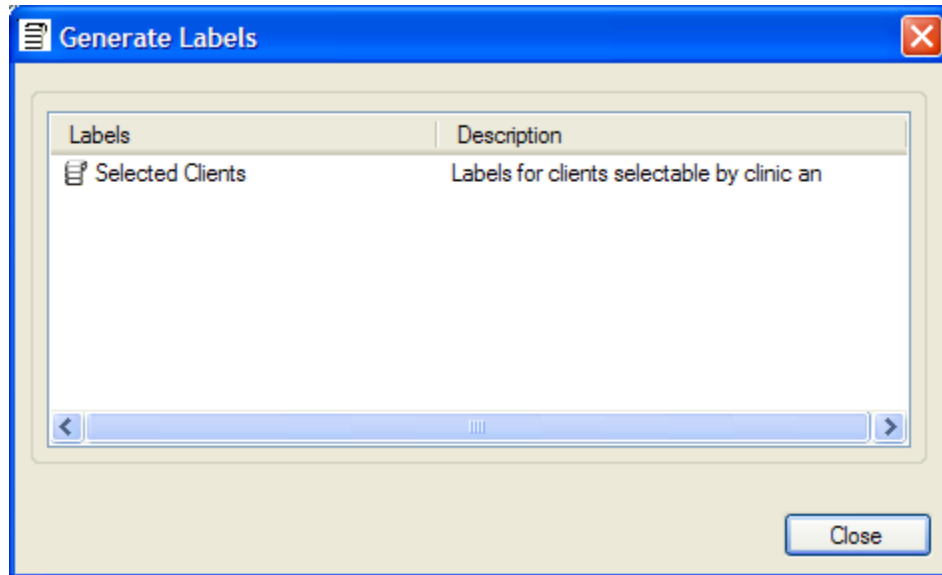


Figure 2 - Generate Labels Dialog

13.2.1 Controls

This section describes the behavior of the controls on the dialog.

13.2.1.1 Address Labels Display List

This control allows the user to view the list of available address labels. The display list will be enabled when the dialog is active. It will be filled with entries for all available types of address labels. Each entry displays as a small icon and a text label that displays to the right of the icon in the Labels column. Additional information is provided for each entry in the Description column. The entries are arranged vertically, each on its own line, in ascending alphabetical order. There are no options for re-sorting the list. The user can make a single selection. Double-clicking a list item will invoke the generate panel for the selected document.

13.2.1.1.1 Selected Clients List Item

The list item will be enabled when the Generate Address Labels dialog is active. It does not have a mnemonic or a caption. Upon selection of the list item, the system will invoke the Generate Client Address Labels dialog defined in [System Outputs Chapter 01 – System Outputs](#).

13.2.1.2 Close Button

This control allows the user to exit the Generate Address Labels dialog. The Close button will be enabled when the Generate Address Labels dialog is active. Characteristics for the Close button are defined in [Consistencies](#).

13.2.2 Processes

This section describes the processes (navigation) that take place as a result of the actions taken on the dialog.

13.2.2.1 Initializing the Interface

Upon initial presentation of the dialog, the following occurs:

- The title bar text will be set to “Generate Labels”.
- The Address Labels display list will be initially have no default selection.

13.3 Generate Documents Dialog

The Generate Documents dialog allows the user to select which document to generate. It is invoked when the user selects the Documents sub-menu item from the System Outputs menu located on the Participant List dialog File menu.

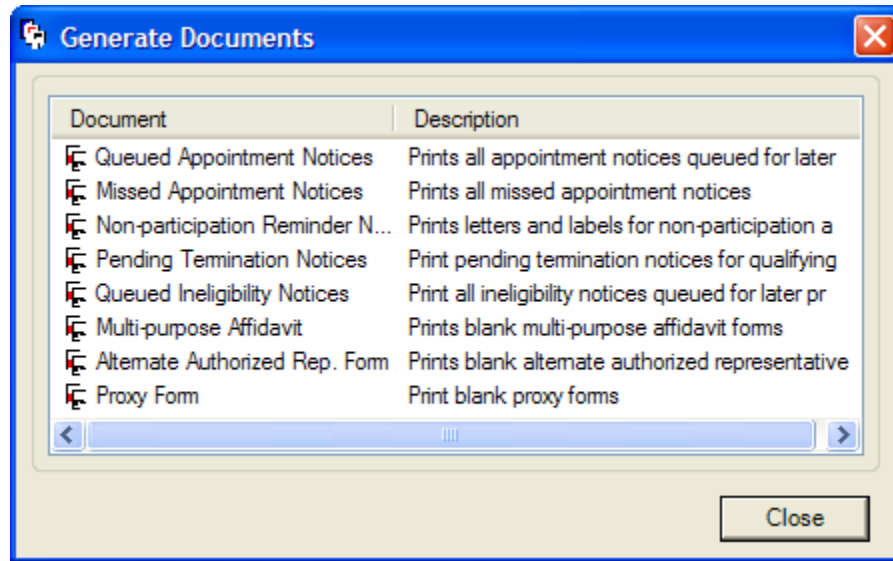


Figure 3 - Generate Documents Dialog

13.3.1 Controls

This section describes the behavior of the controls on the dialog.

13.3.1.1 Documents Display List

This control allows the user to view the list of available documents. The display list will be enabled when the dialog is active. It will be filled with entries for documents specified as Active in the Reference Database. Each entry displays as a small icon and a text label that displays to the right of the icon in the Document column. Additional information is provided for each entry in the Description column. The entries are arranged vertically, each on its own line, in ascending alphabetical order. There are no options for re-sorting the list. The user can make a single selection. Double-clicking a list item will invoke the generate panel for the selected document.

13.3.1.1.1 Alternate Authorized Rep. Form List Item

The list item will be enabled when the dialog is active. It does not have a mnemonic or a caption. Upon selection of the list item, the system will invoke the Generate Alternate Authorized Representative Form dialog defined in [System Outputs Chapter 01 – System Outputs](#).

13.3.1.1.2 Missed Appointment Notices List Item

The list item will be enabled when the dialog is active. It does not have a mnemonic or a caption. Upon selection of the list item, the system will invoke the Generate Missed Appointment Notices dialog defined in [System Outputs Chapter 01 – System Outputs](#).

13.3.1.1.3 Multi-purpose Affidavit List Item

The list item will be enabled when the dialog is active. It does not have a mnemonic or a caption. Upon selection of list item, the system will invoke the Generate Multi-purpose Affidavit Form dialog defined in [System Outputs Chapter 01 – System Outputs](#)

13.3.1.1.4 Non-participation Reminder Notices List Item

The list item will be enabled when the dialog is active. It does not have a mnemonic or a caption. Upon selection of the list item, the system will invoke the Generate Non-participation Reminder Notices dialog defined in [System Outputs Chapter 01 – System Outputs](#).

13.3.1.1.5 Official Notifications List Item

The list item will be enabled when the dialog is active. It does not have a mnemonic or a caption. Upon selection of the list item, the system will invoke the Generate Official Notifications dialog defined in [System Outputs Chapter 01 – System Outputs](#).

13.3.1.1.6 Prescription Formula Request List Item

The list item will be enabled when the dialog is active. It does not have a mnemonic or a caption. Upon selection of the list item, the system will invoke the Prescription Formula Request dialog defined in [System Outputs Chapter 01 – System Outputs](#).

13.3.1.1.7 Proxy Form List Item

The list item will be enabled when the dialog is active. It does not have a mnemonic or a caption. Upon selection of the list item, the system will invoke the Generate Proxy Form dialog defined in [System Outputs Chapter 01 – System Outputs](#).

13.3.1.1.8 Queued Appointment Notices List Item

The list item will be enabled when the dialog is active. It does not have a mnemonic or a caption. Upon selection of the list item, the system will invoke the Generate Queued Appointment Notices dialog defined in [System Outputs Chapter 01 – System Outputs](#).

13.3.1.1.9 Queued Ineligibility Notices

The list item will be enabled when the dialog is active. It does not have a mnemonic or a caption. Upon selection of the list item, the system will invoke the Generate Ineligibility Notices dialog defined in [System Outputs Chapter 01 – System Outputs](#).

13.3.1.2 Close Button

This control allows the user to exit the Generate Documents dialog. The Close button will be enabled when the Generate Documents dialog is active. Characteristics for the Close button are defined in [Consistencies](#).

13.3.2 Processing

This section describes the processes (navigation) that take place as a result of the actions taken on the dialog.

13.3.2.1 Initializing the Interface

Upon initial presentation of the dialog, the following occurs:

- The title bar text will be set to “Generate Documents”.
- The display list will initially have no default selection.

13.3.2.2 Close

Upon selection of the Close button, the system dismisses the Generate Reports dialog and return to the previous dialog.