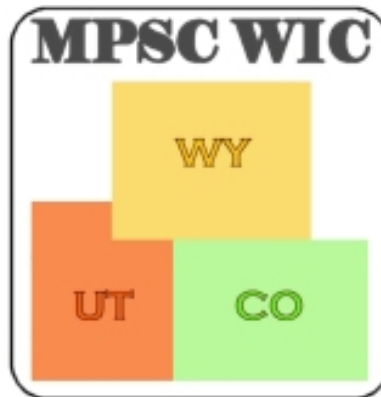

Mountain Plains States Consortium WIC System Project

DETAILED FUNCTIONAL DESIGN DOCUMENT FM 0 FOOD MANAGEMENT OVERVIEW

Presented to:



Revision Date: January 7, 2011

Prepared by

ciber

650 Wilson Lane, Suite 200
Mechanicsburg, PA 17055
717.691.5500

CO Contract #WIC0601052
CIBER Project #CODPH00201

Products and company names mentioned herein may be the trademarks or registered trademarks of their respective owners. Unmentioned brands or company names are also respected with their own registered trademarks. Some content may be a direct translation from their Web sites.

Document Revisions

Revision Date	Updated By	Requested By	Description of Revision

Table of Contents

1	Introduction	4
2	Navigation Panel	6
2.1	Navigation Button	6
2.2	Navigation Tree Structure	6
2.2.1	Connected Mode	6
2.2.2	Disconnected Mode	7
2.3	Saving Work	7
3	Main Panel	8
4	Information Panel.....	9
5	Menu Bar	10
5.1	File Menu.....	10
5.1.1	Change Clinic	11
5.2	Edit Menu.....	12
5.3	Help Menu.....	12
5.3.1	About (System Name) Pop-up.....	13
6	Tool Bar.....	15

1 Introduction

The Food Management portion of the system is where WIC-approved foods, participant profiles, food rules, and model food packages are maintained. Each food must be entered in the system's database before it can be selected to be included in a model food package. Once participant profiles are set up, the food packages and the USDA food rules work in conjunction with each other to validate food packages assigned to participants in the Clinic Services system area.

The first section within Food Management is made up of the Food screens. These screens support the USDA food structure and start with a screen to manage the food categories. The food structure hierarchy is designed to handle either type of food delivery states: paper FIs or EBT Cards. Edits enforce the necessary business rules to ensure that each type is set up correctly. The remaining screens are used to manage this hierarchy: Subcategories, Containers and UPC/PLU Detail Products. The Subcategory screen is used to create, update and display the subcategory and its primary attributes. The Containers screen is used to create, update and display the containers of a subcategory with its primary attributes as well as its peer group pricing information. The UPC Detail Products screen is used to create, update and display the detail products appropriately based on food delivery type. For paper FI based states, the detail products under the containers are primarily for price survey purposes to set the peer group pricing at the container level. These detail products may be defined generically or with a specific UPC. For EBT-based states, the detail products require UPCs and are under the subcategory/container level (1 to 1 relationship). UPC detail products are tied to much more functionality in the EBT states (i.e. purchases) and require a screen for their peer group pricing.

The second section within Food Management is the Manufacturer screens. The first screen, Contacts and Address, is used to record basic information about a manufacturer including the name, contact information and address information. The next screen is used to record rebate information identifying the formulas and entering their corresponding effective date, end date, rate and group numbers. This screen also allows the printing of the manufacturer's rebate invoice.

The third section within Food Management is the Participant Profiles screen. The participant profiles screen is used to associate the previously defined participant profiles to the food rules and the model food packages.

The fourth section within Food Management is the WIC Formula Levels screen. The WIC Formula Level screen is used to determine a breastfeeding woman's participant profile attribute based on the amount of formula that her infant is receiving from WIC.

The fifth section with Food Management is comprised of the Food Rules screens. The first screen, Foods, is used to add, modify, and delete product rules for each food subcategory. These rules define the maximum amount of each product a WIC participant receives based on the USDA maximums or state-specific maximum. The specific items associated with each subcategory are then defined on the Food Rules screen. A Calculate Nutritional equivalent pop-up is provided to aid the user in determining the nutritional equivalent of one food item to another. The second screen, Participant Profiles, is used to associate previously defined participant profiles to the food rules.

The sixth section within Food Management is the Change Food Rule screen. This screen is used to define changes that are automatically applied when a participant reaches a milestone.

The seventh section within Food Management is the Model Food Packages screens. This section is used to add, edit, or delete a model food package. Model food packages are set up by the state WIC office and are generally the most commonly issued food packages. The first screen, Model Food Package, is used to enter the food item, quantity and months. The second screen, Package Participant Profiles, is used to associate the model food packages with the participant profiles previously set up in the system. These associations are what provide validation when issuing a food package to a participant in the clinic services module of the system.

The last section is the Verification Results screen which is used to display any rule violations from the verification process. In order for a model food package to be used in Clinic Services it must completely pass the verification process, which takes into account all of the food rules and participant profiles defined previously.

2 Navigation Panel

The Navigation Panel contains the Navigation Buttons (stacked starting from the bottom of panel) and the Navigation Tree Structure (top of panel).

2.1 Navigation Button

The Navigation Button labeled "Food Management" will allow the user to access the operation screens.

When the user clicks on the Food Management Navigation Button,

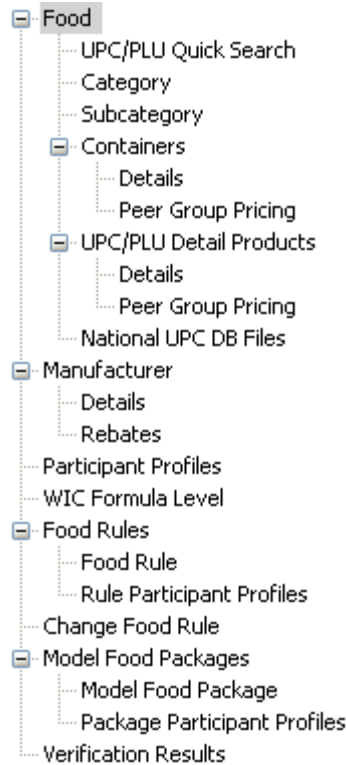
- Navigation Panel will contain the food management tree structure with the branch nodes collapsed. See the Navigation Tree Structure section in this document for more details.
- Main Panel contains the System Brand Screen. See the System Overview DFDD for more details on the System Brand Screen.
- Information Panel displays the System tab by default.

2.2 Navigation Tree Structure

The Navigation Tree Structure for the Food Management area contains the functions that are described in the accompanying functional DFDDs. A user's view will differ based on their security access profile.

2.2.1 Connected Mode

This tree structure shows the maximum possibilities for this functional area for a user in connected mode.



Note: UPC/PLU Detail Products is only available in EBT states.

2.2.2 Disconnected Mode

There is no functionality available in this functional area for a user in disconnected mode.

2.3 Saving Work

The Food Management saves units of work at the following levels:

- Foods
- Manufacturers
- Participant Profiles
- WIC Formula Level
- Food Rules
- Change Food Rule
- Model Food Packages

3 Main Panel

This panel is where all the screens described in the accompanying DFDDs are displayed.

When the user clicks on the Food Management Navigation Button, the System Brand screen is displayed in the main panel.

4 Information Panel

The Information Panel contains two tabs. The first will be entitled "System" which contains active "System Wide" and "Food Management" type system messages. The second will be entitled "Messages" which will contain warning and error messages associated with the main panel screen. These are described in the System Overview DFDD.

5 Menu Bar

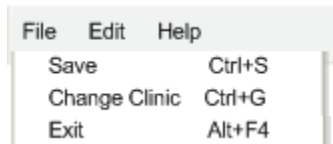
The Food Management Menu Bar is visible at all times and is found at the top of the screen.



Control	Description	
File	Select File to display File menu options. See the File Menu section for more information.	
	Type	Menu Item
	Hot Key	Alt + F
Edit	Select Edit to display Edit menu options. See the Edit Menu section for more information.	
	Type	Menu Item
	Hot Key	Alt + E
Help	Select Help to display Help menu options. See the Help Menu section for more information.	
	Type	Menu Item
	Hot Key	Alt + H

5.1 File Menu

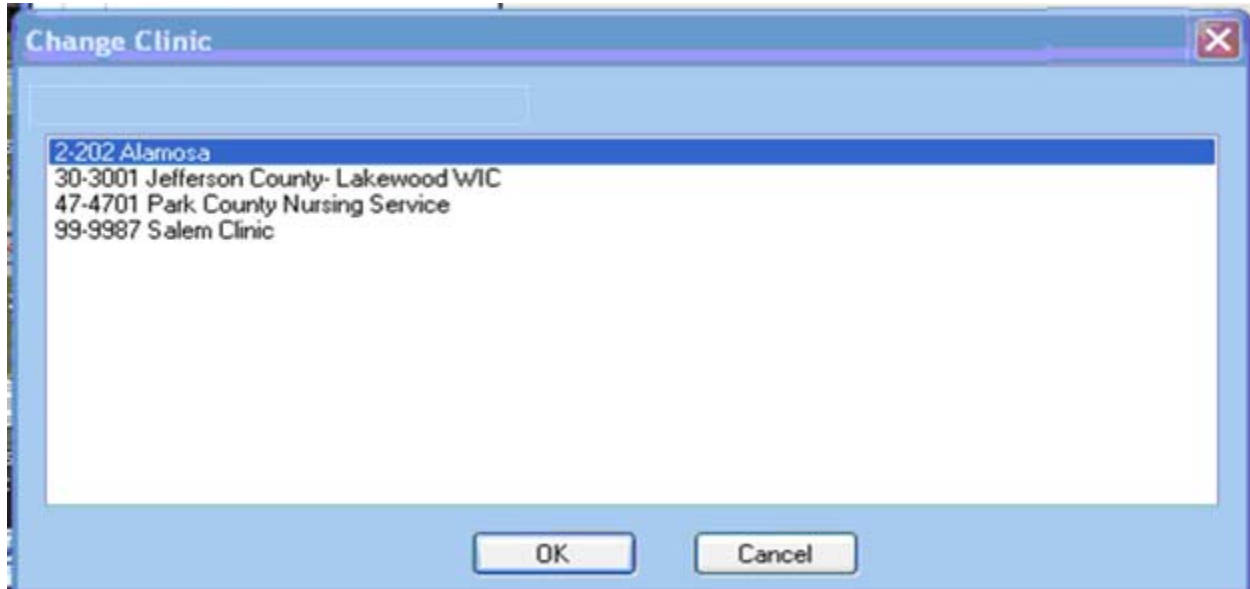
The File menu is visible at all times, giving access to common File functions.



Control	Description	
Save	Select Save to save the unit of work.	
	Type	Menu Item
	Hot Key	Ctrl + S
Change Clinic	Select Change Clinic to select a different clinic.	
	Type	Menu Item
	Hot Key	Ctrl + G
Exit	Select Exit to exit the application.	
	Type	Menu Item
	Hot Key	Alt + F4

5.1.1 Change Clinic

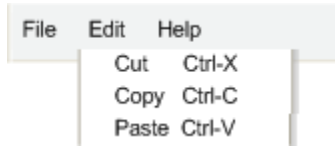
This pop-up is used to change the clinic that the user is logged into. At user login, the user selects a clinic. The access for the user is based on the clinic.



Control	Description		
unlabeled	The unlabeled data grid within the Change Clinic pop-up allows the user to select another clinic. The user sees clinics that they have access rights to see. The user highlights the clinic that they want to go to and clicks the OK button.		
	Type	Read-Only Data Grid	
LA-Clinic number	This is the local agency-clinic number.		
	Format	Z9-ZZZZ9	Calculated No
Clinic name	This is the name of the clinic.		
	Format	Alphanumeric	Calculated No
OK	Clicking the OK button changes the clinic and returns the user back to the main application.		
	Type	Command Button	
	Hot Key	Alt + O	
Cancel	Clicking the Cancel button returns the user back to the main application.		
	Type	Command Button	
	Hot Key	Alt + L	

5.2 Edit Menu

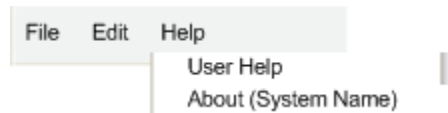
The Edit menu is visible at all times, giving access to editing functions. Most editing is done on the individual screen.



Control	Description	
Cut	Select the Cut menu item to remove selected text to paste it to another location.	
	Type	Menu Item
	Hot Key	Ctrl + X
Copy	Select the Copy menu item to create a copy of selected text to paste it to another location.	
	Type	Menu Item
	Hot Key	Ctrl + C
Paste	Select the Paste menu item to place text cut or copied in the selected location.	
	Type	Menu Item
	Hot Key	Ctrl + V

5.3 Help Menu

The Help menu is visible at all times, giving access to user help and system version information.

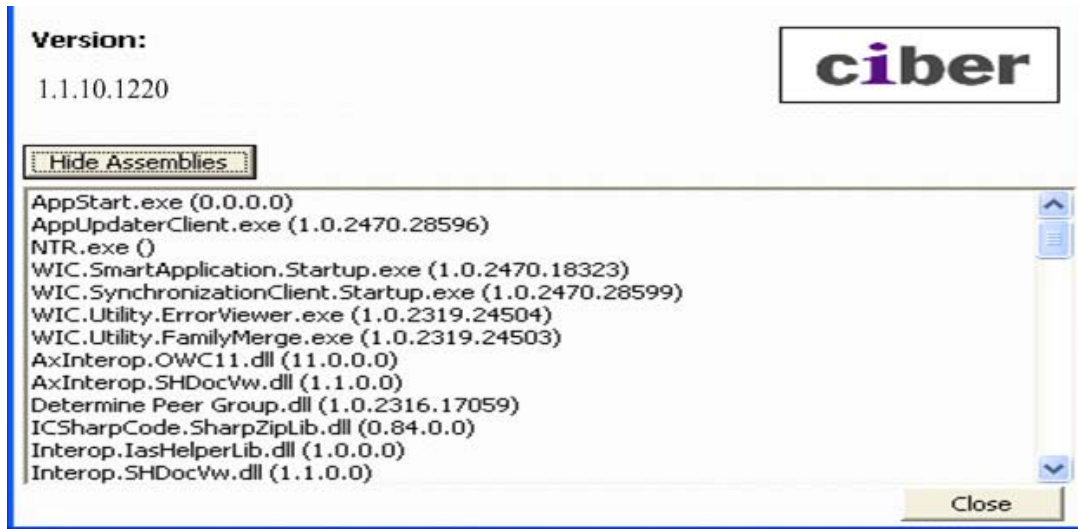


Control	Description	
User Help	Clicking the User Help menu item allows the user to view the current version of the application User Help. This opens a Help Window as described in the System Overview DFDD.	
	Type	Menu Item
	Hot Key	None


Control	Description		
About (System Name)	Clicking the About (parameter) menu item allows the user to view version and system information.		
	Type	Menu Item	
	Hot Key	None	

5.3.1 About (System Name) Pop-up

This pop-up provides the user with the version number of the application and allows for assemblies to be viewed as needed.



Control	Description			
Version	The version number that is displayed shows the version of the application that is currently being used (as defined in system parameter).			
	Type	Text Box		
	Required	NA		
	Length	NA		
	Validation	NA		
	Display Only	Yes	Calculated	No
	DB Column	Not Stored		

Control	Description			
	The CIBER logo appears for branding purposes. This is the company that developed the application.			
	Type	Text Box		
	Required	Yes		
	Length	NA		
	Validation	NA		
	Display Only	Yes	Calculated	No
	DB Column	NA		
Show Assemblies/Hide Assemblies	By default, the About (System Name) Pop-Up displays the version number of the application. Clicking the Show Assemblies command button displays system assemblies. Clicking the Hide Assemblies command button returns to the default view.			
	Type	Command Button		
	Hot Key	Alt + M		
Close	Clicking the Close command button closes the About (system name) pop-up and returns the user to the Clinic Services screens.			
	Type	Command Button		
	Hot Key	Alt + C		


Business Rules
1.

Developer Notes
1.

6 Tool Bar

The Food Management Tool Bar is visible at all times, giving access to frequently used functions and screens.



Control	Description	
	Clicking this icon saves any changes that were made on the current screen to the database.	
	Type	Command Button
	Hot Key	None